

Digraphs
Printable
Flashcards



Can you match the picture flashcards to the sound cards...?

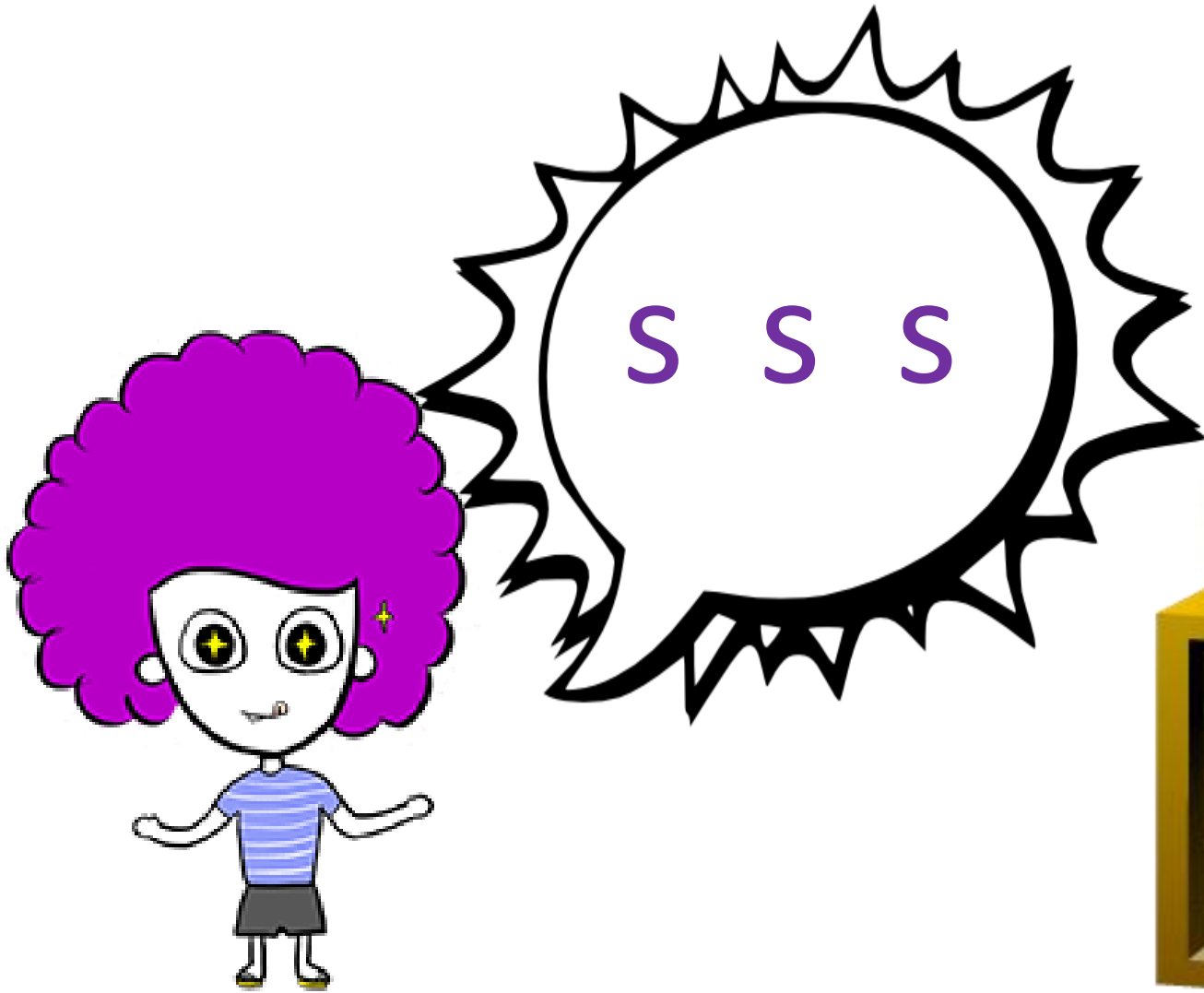


=



/zh/

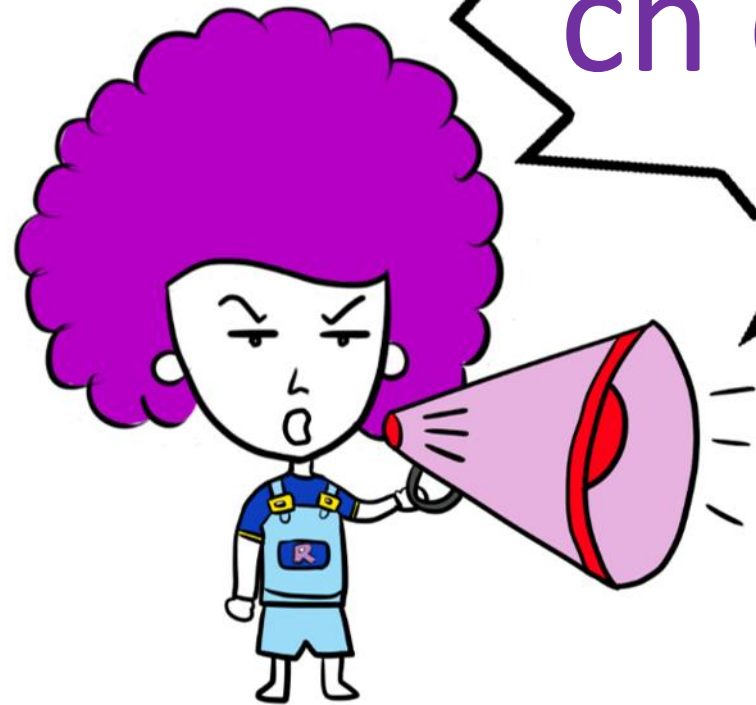
treasure



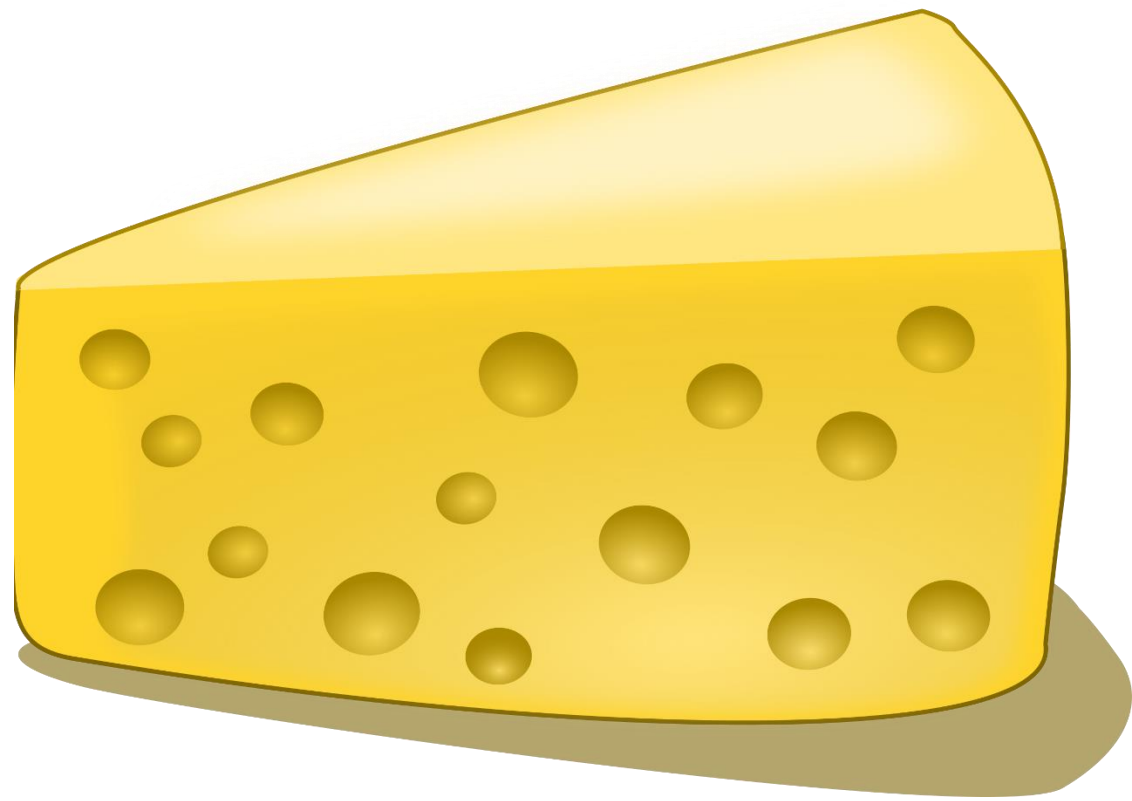
television



/ch/



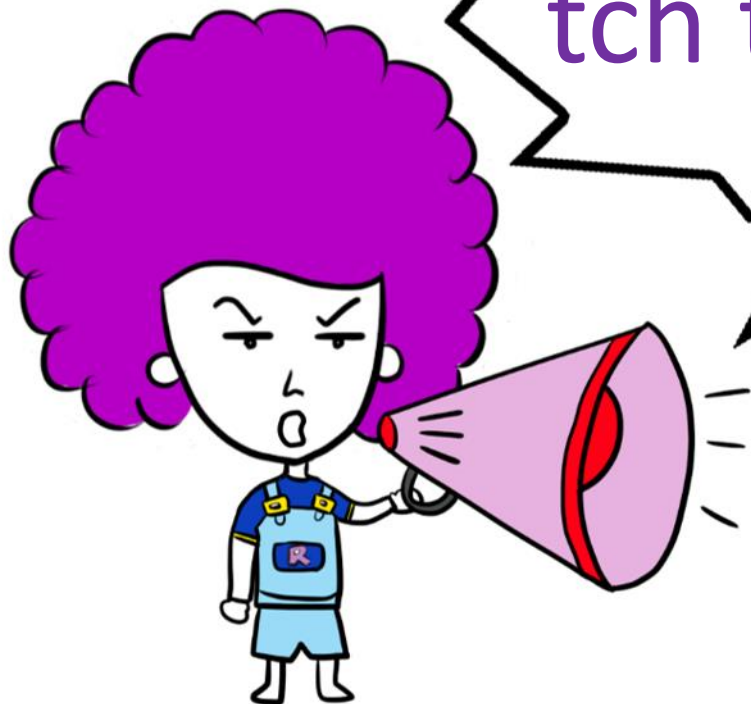
ch ch ch

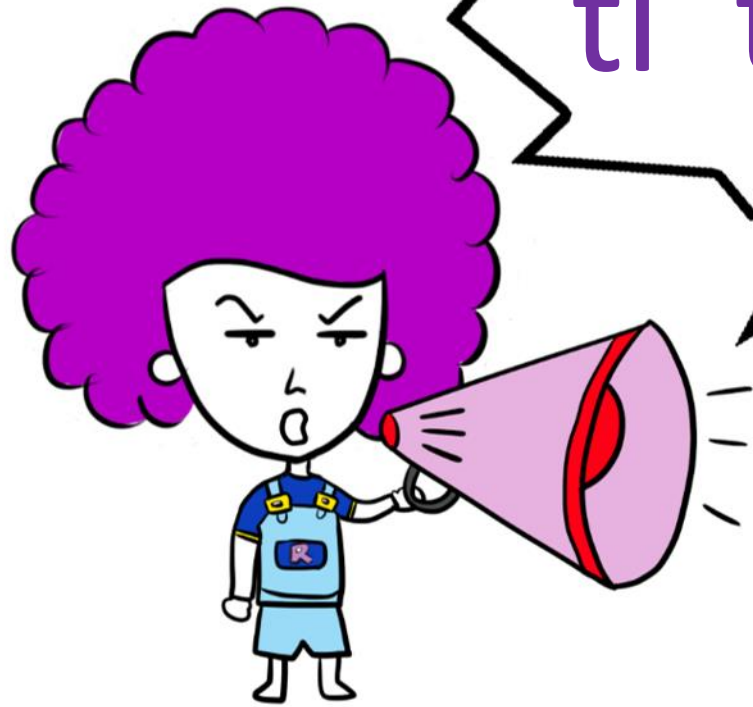


cheese

watch

tch tch tch



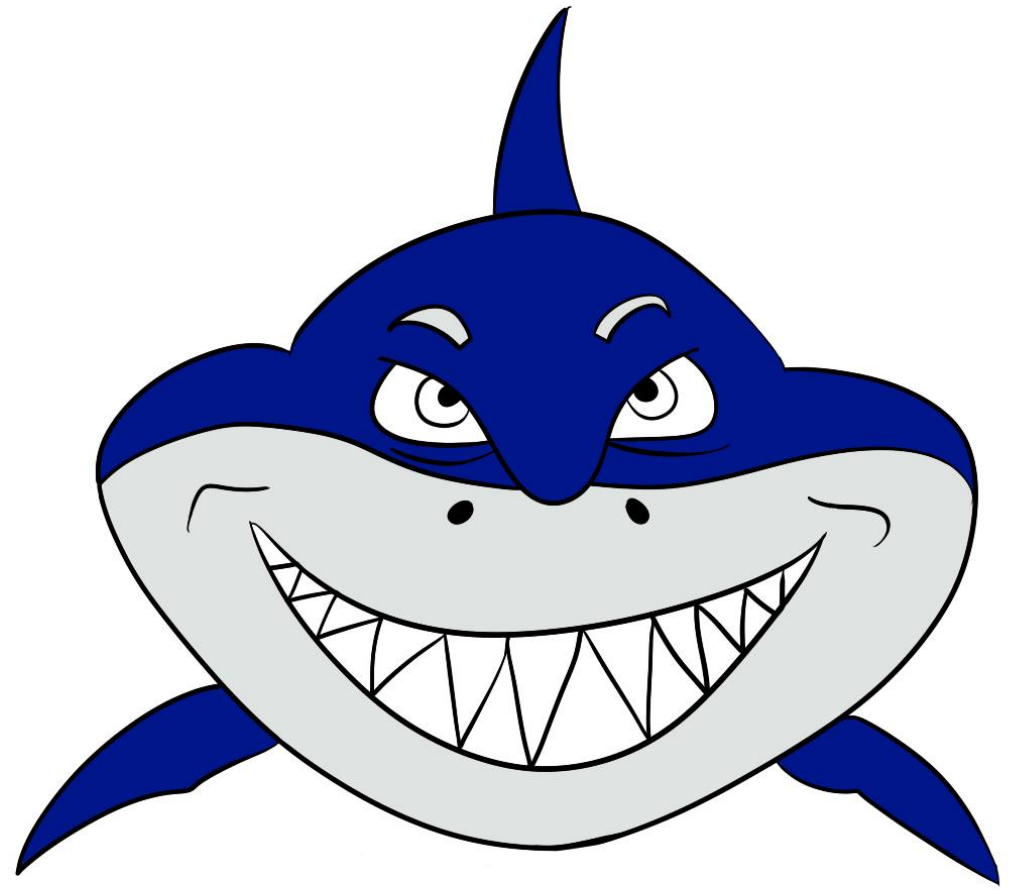


ti ti ti



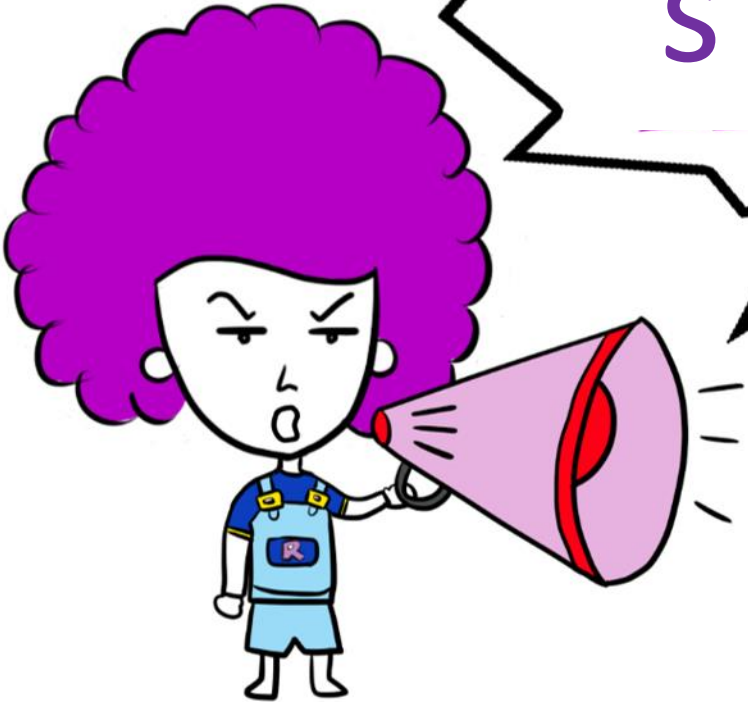
question

/sh/



shark

sure



- | | |
|------------------------------|----------------------------|
| ● Gares desservies | ● HOUILLES-CARRIERES/SEINE |
| ● CHATELET-LES-HALLES | ● SARTROUVILLE |
| ● AUBER | ● MAISON-LAFITTE |
| ● CHARLES DE GAULLE-ETOILE | ● ACHERES-VILLE |
| ● GRANDE ARCHE DE LA DEFENSE | ● CONFLANS-FIN D'OISE |
| ● NANTERRE-PREFECTURE | ● NEUVILLE UNIVERSITE |
| ● NANTERRE -UNIVERSITE | ● CERGY-PREFECTURE |
| ● NANTERRE-VILLE | ● CERGY-SAINT-CHRISTOPHE |
| ● RUEIL MALMAISON | ● CERGY-LE-HAUT |
| ● CHATOU-CROSSY | ● ACHERE-GRAND CORMIER |
| ● LE VESINET CENTRE | ● POISSY |
| ● LE VESINET-LE-PECQ | ■ TRAIN COURT |
| ● SAINT-GERMAIN-EN-LAYE | |



RER A St-Germain-en-Laye · Poissy · Cergy

ti ti ti

station

- B D X →
- E ↓
- 4 Porte de Clignancourt
Porte d'Orléans
- 5 Botteghe Pagine Pagine
Place d'Italie



/th/
(unvoiced)

three

th th th



3

thirty- three

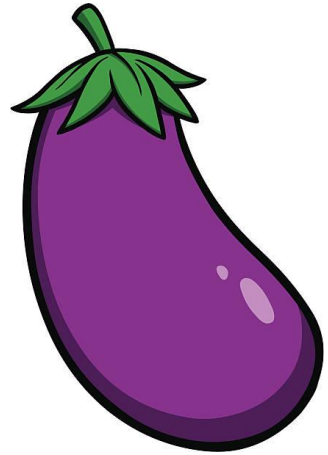
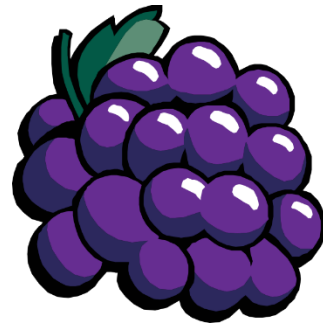
th th th



/th/

(voiced)

this that





th th th

there

