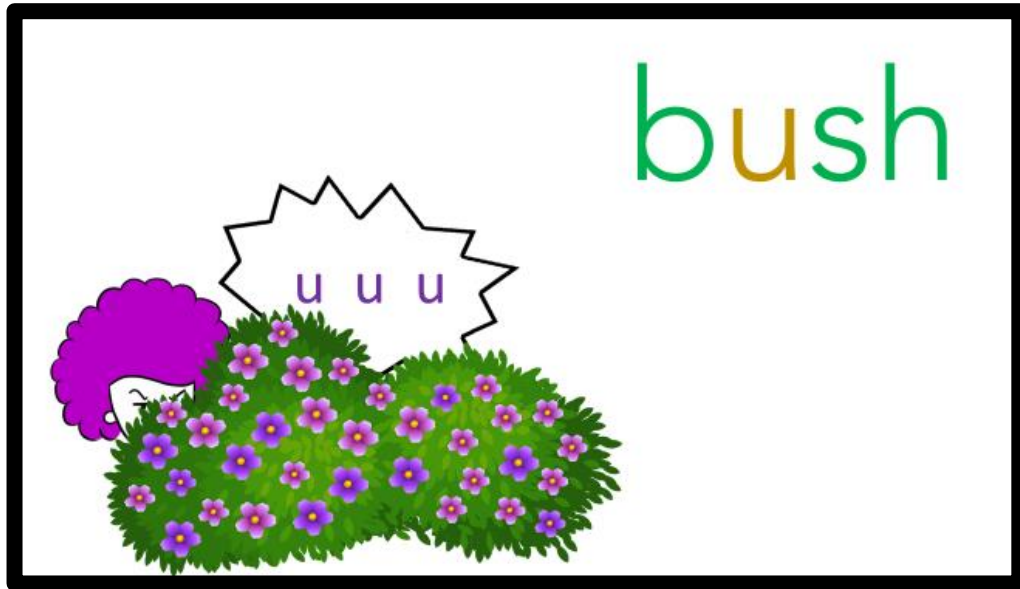


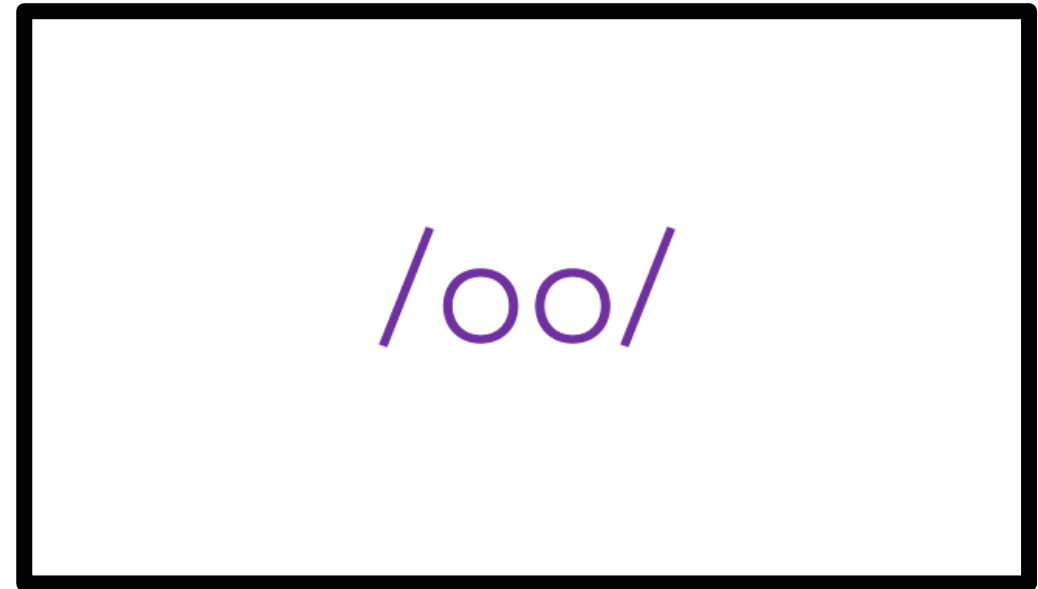
Short Vowels  
Printable  
Flashcards



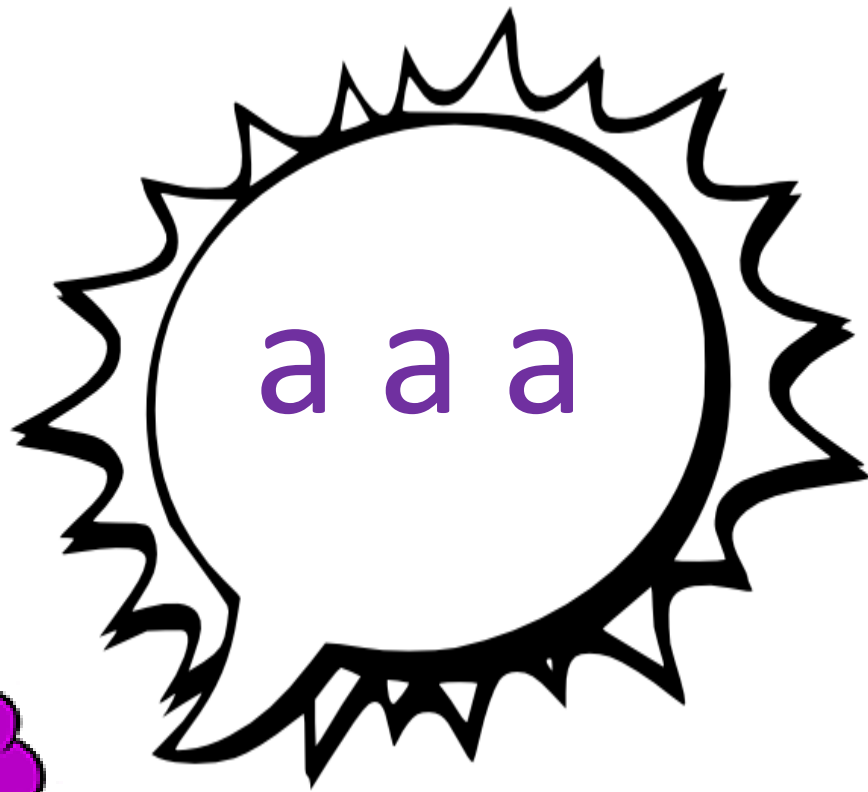
Can you match the picture flashcards to the sound cards...?



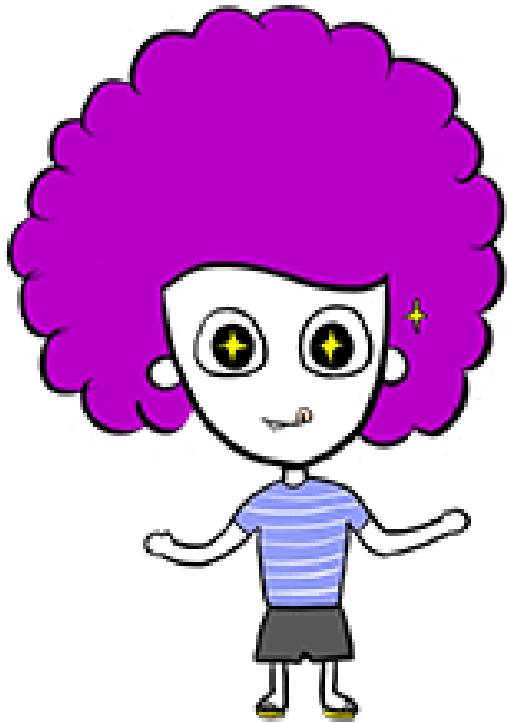
=



/a/

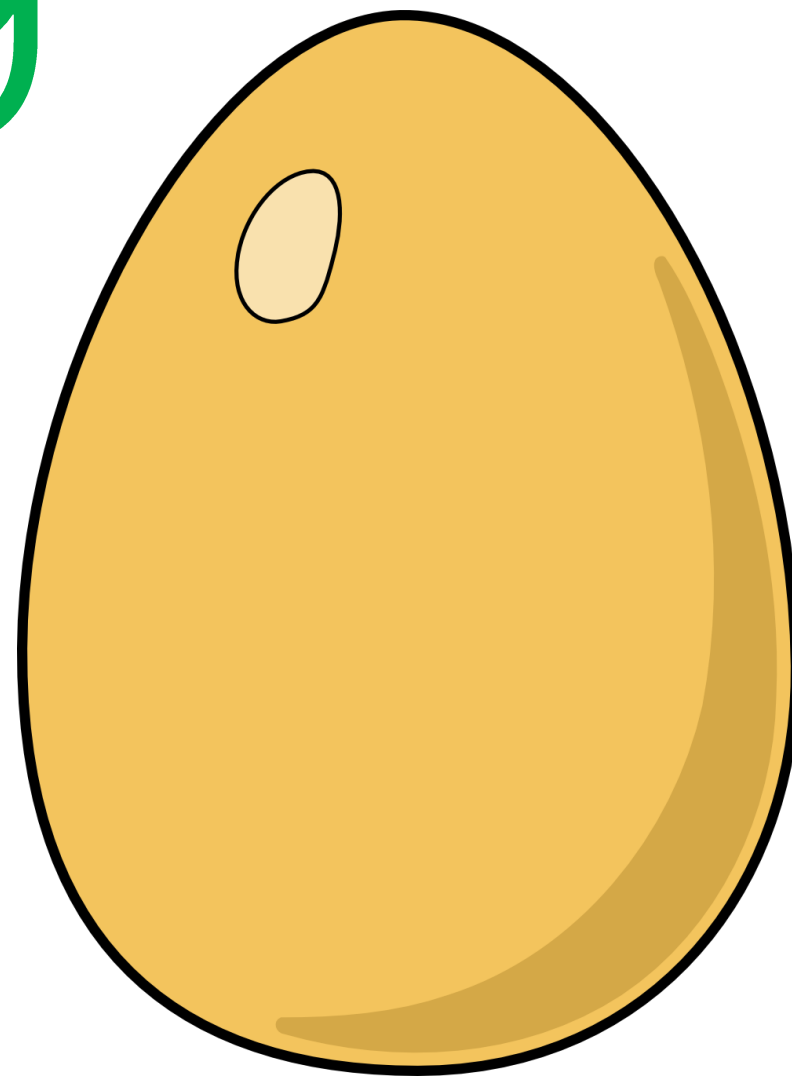
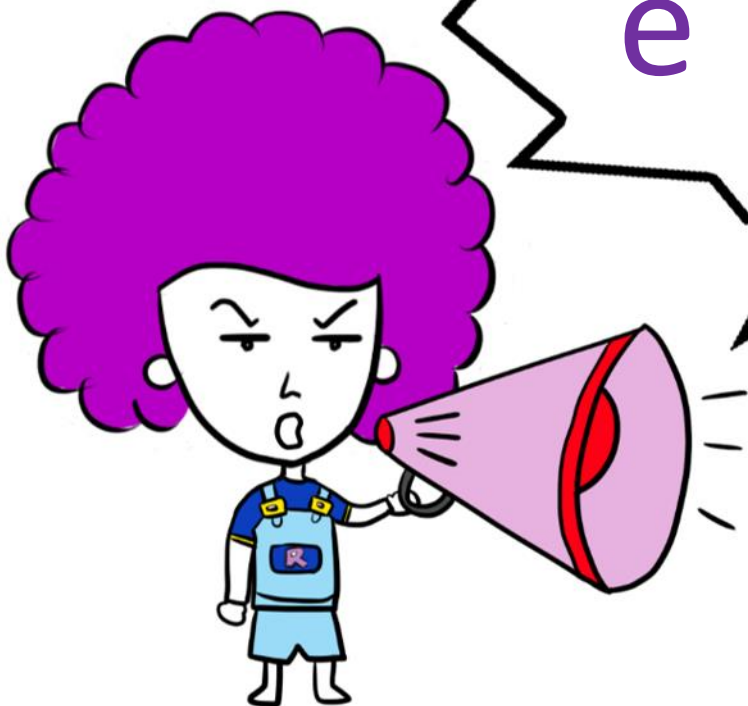


cat



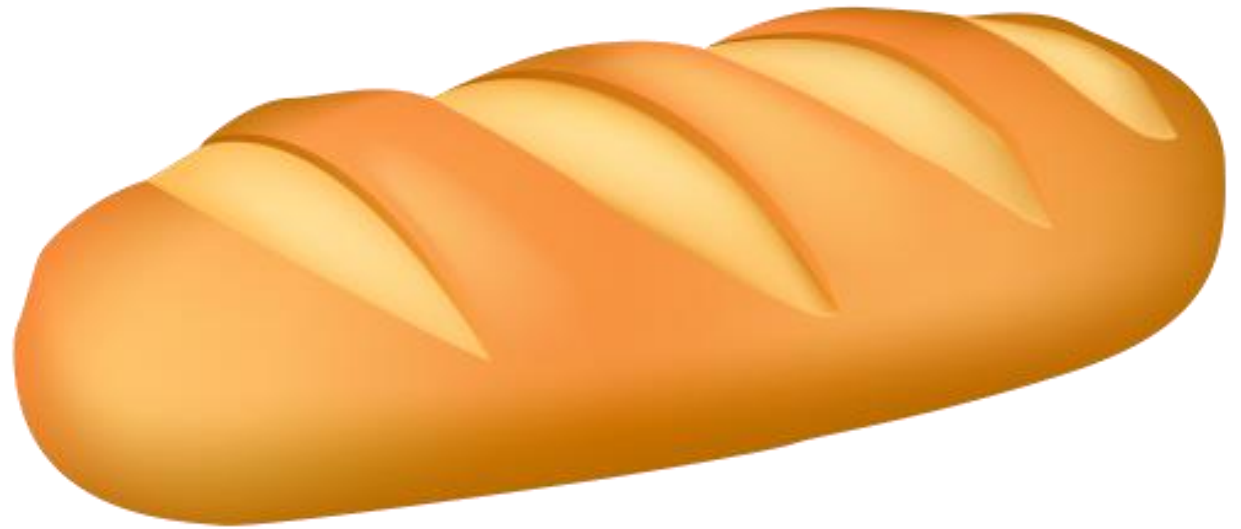
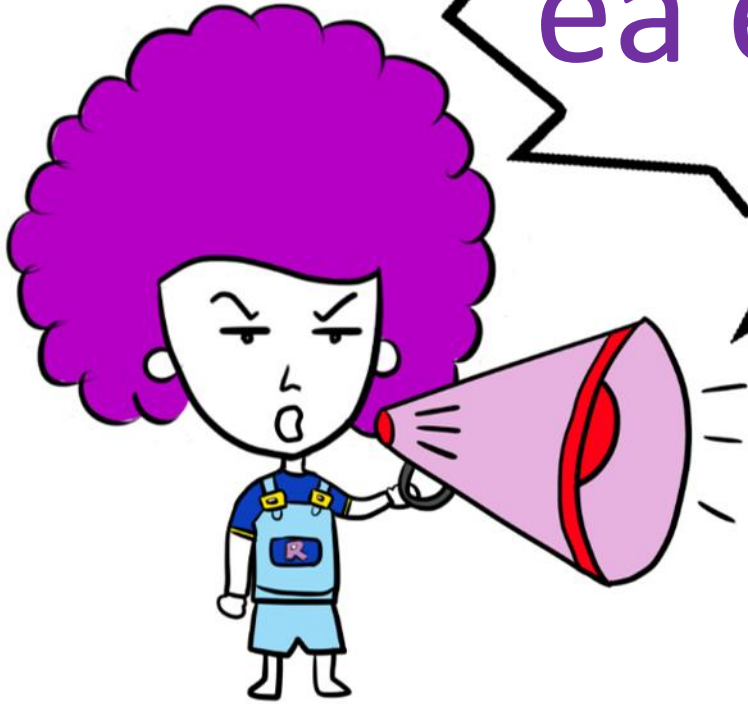
/e/

e g g



bread

ea ea ea



friend



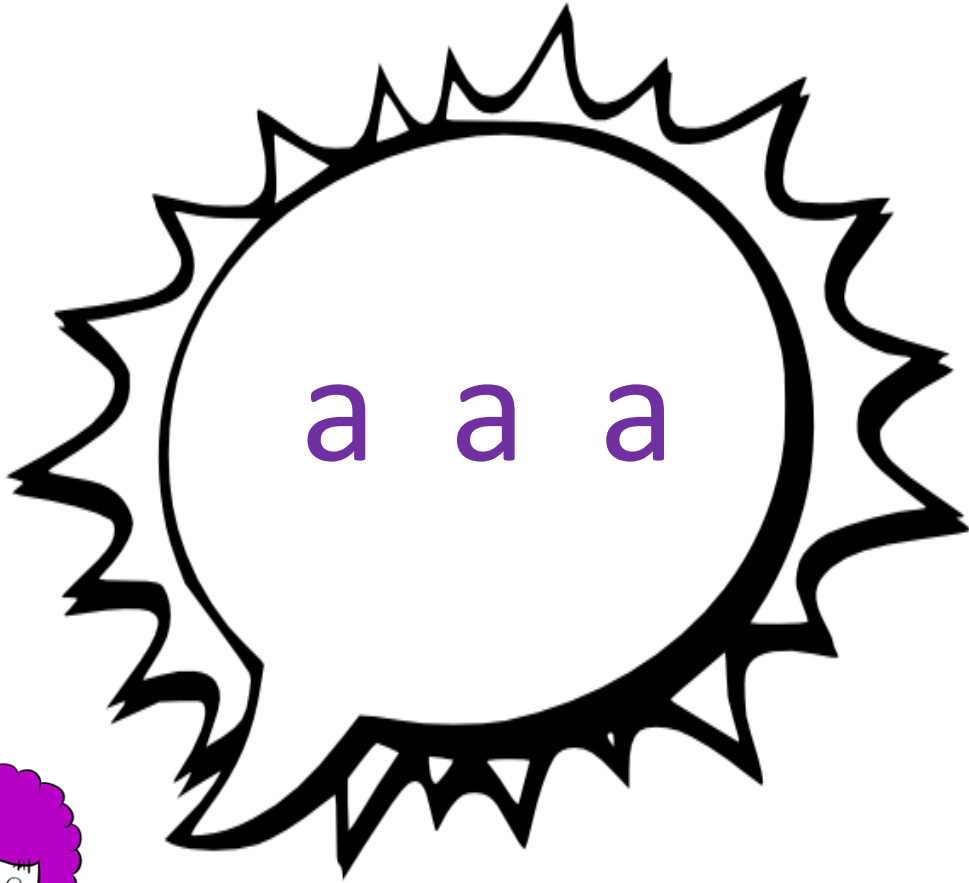




ai ai ai



said

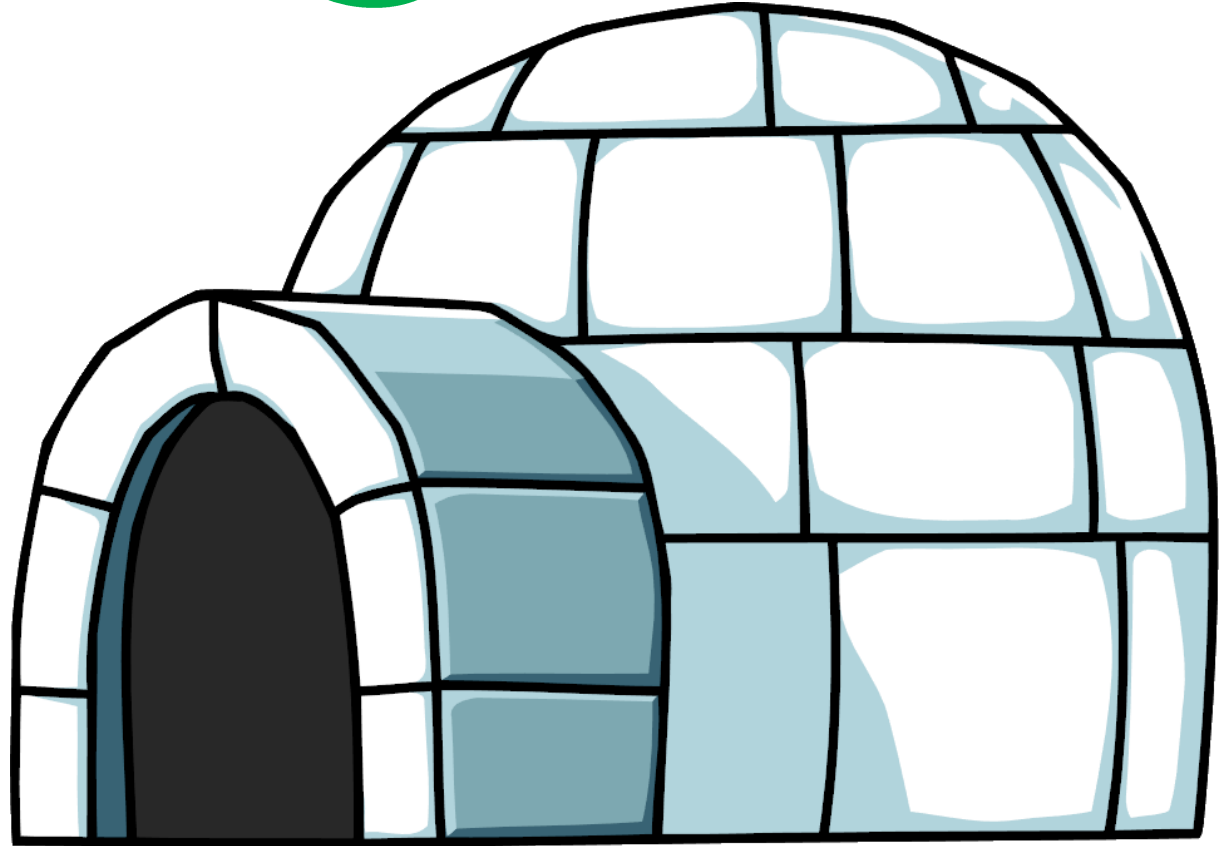
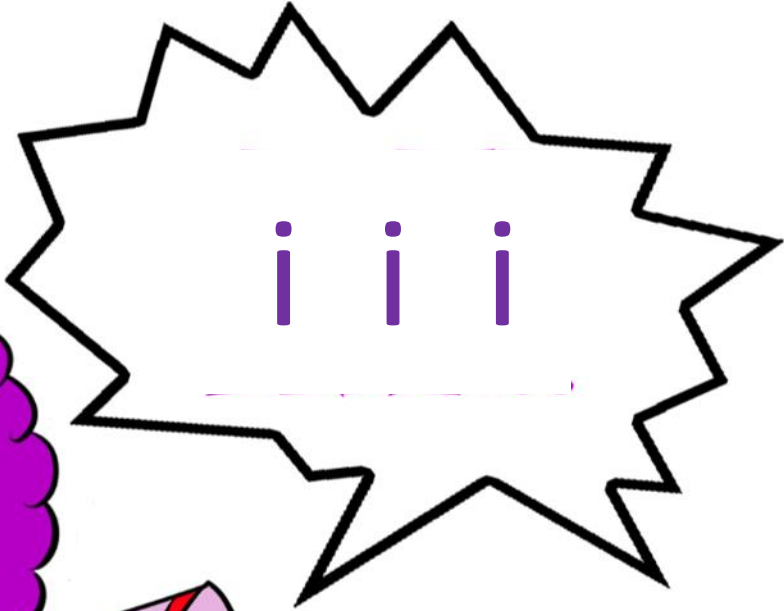


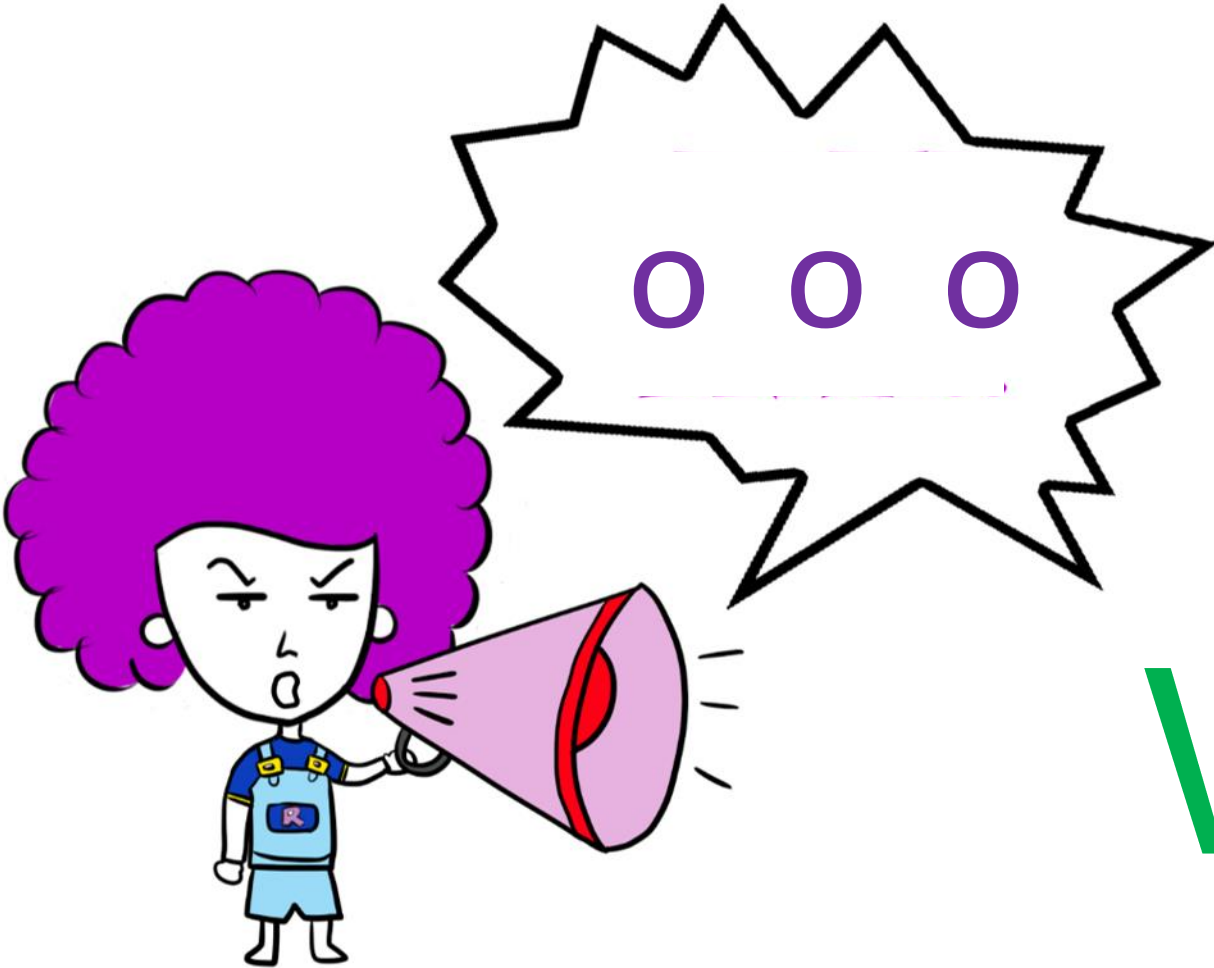
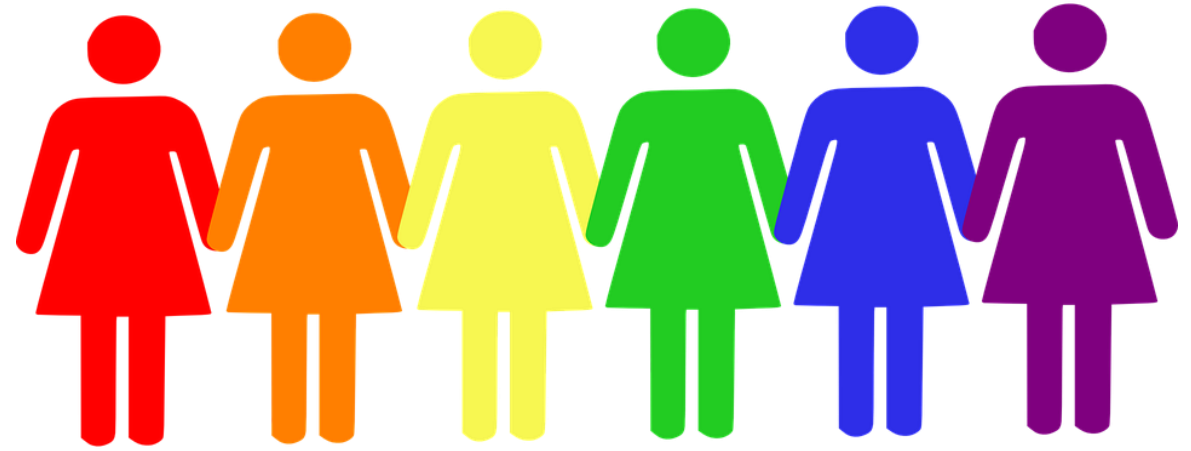
many



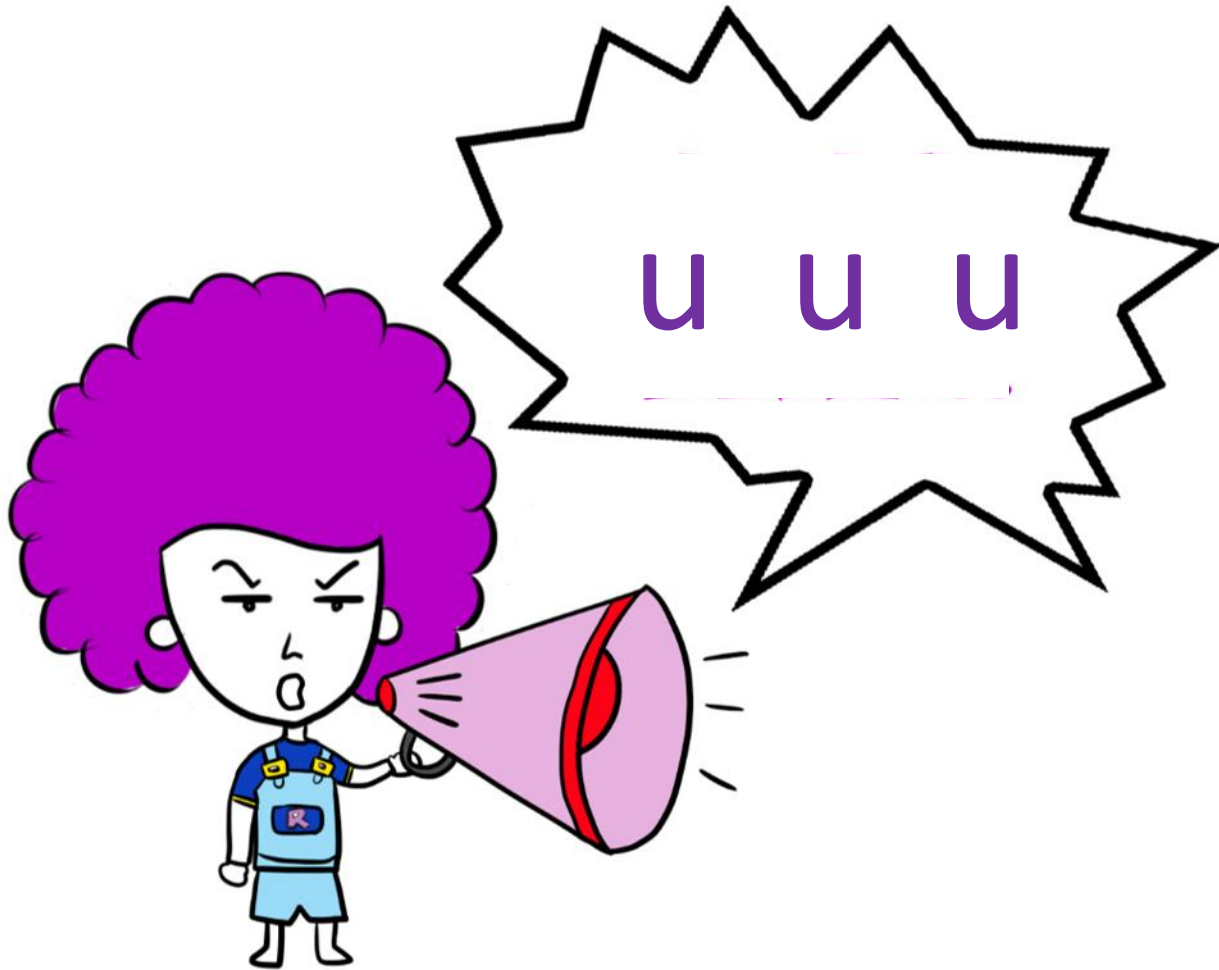
iv

igloo





women

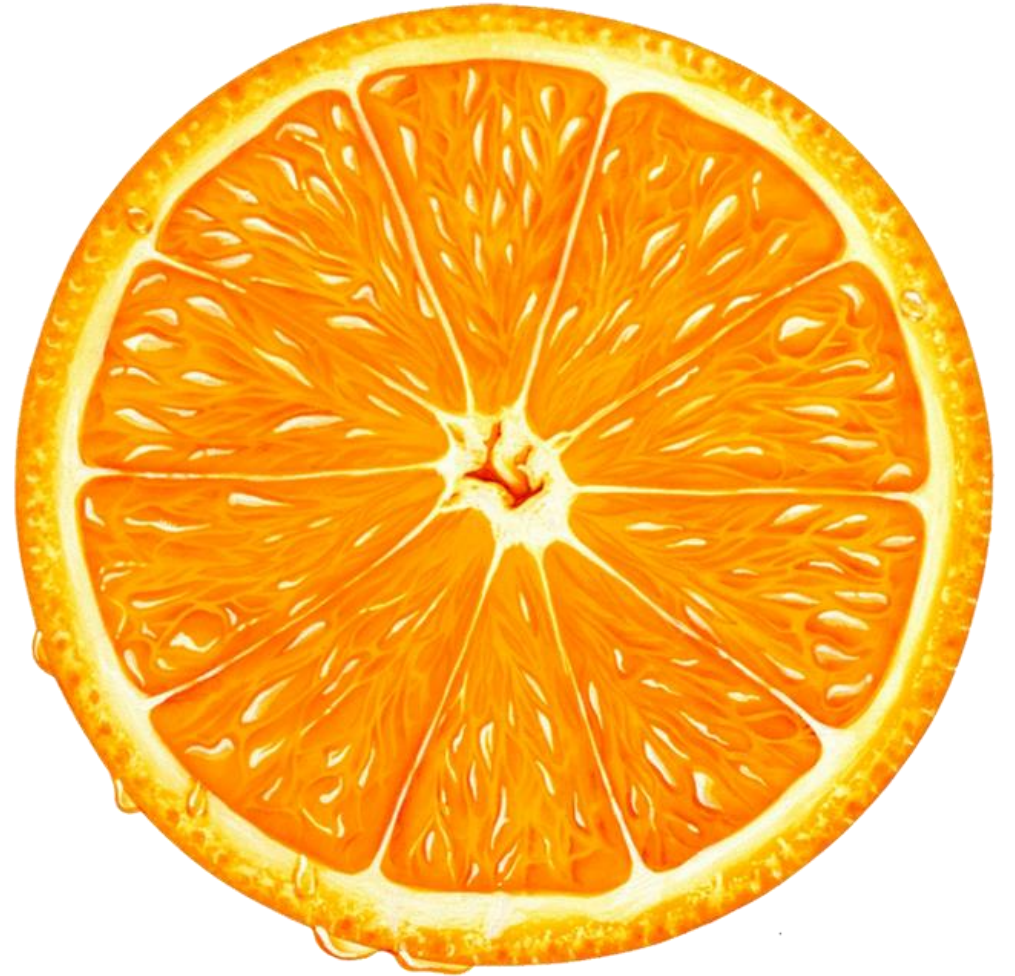
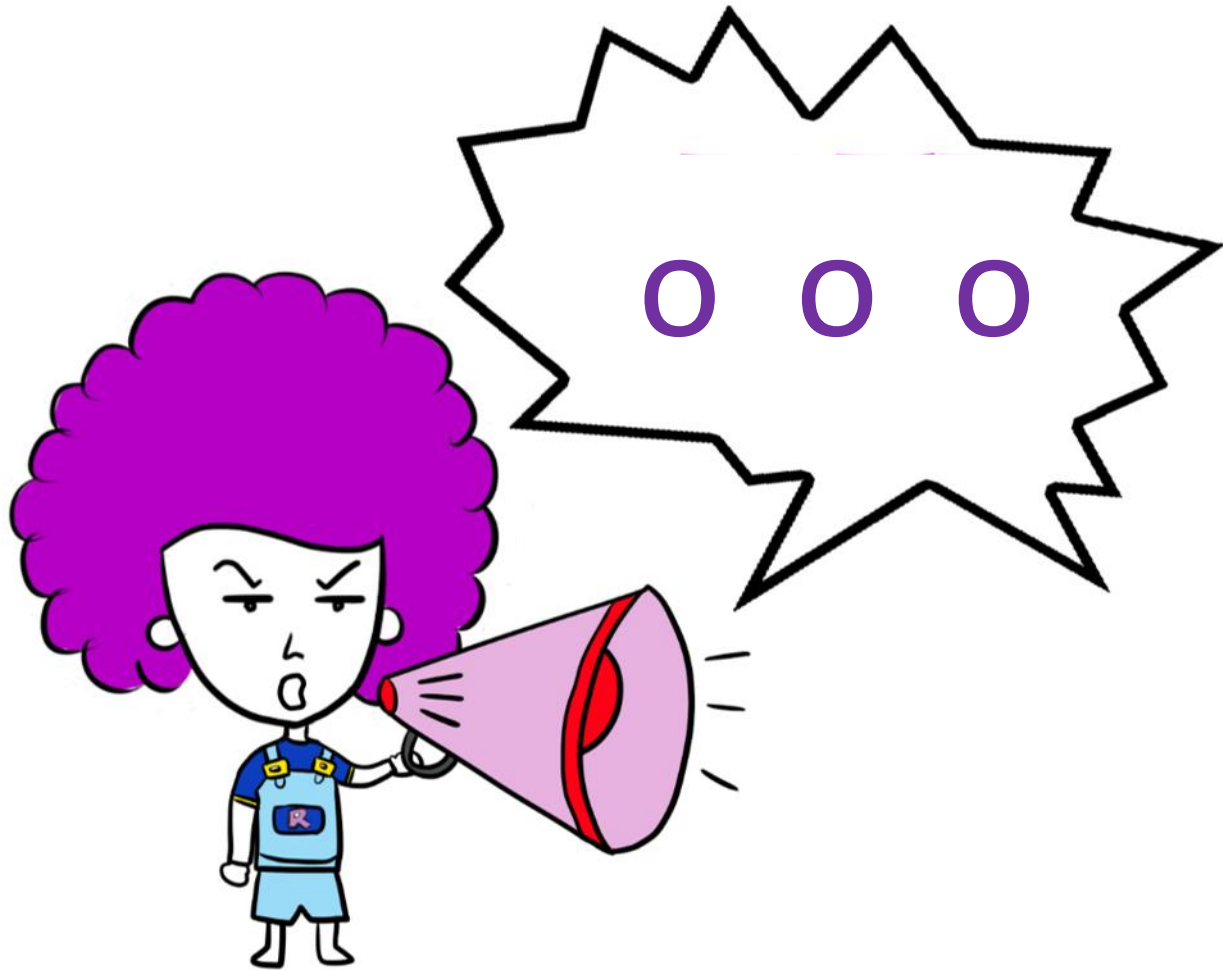


busy



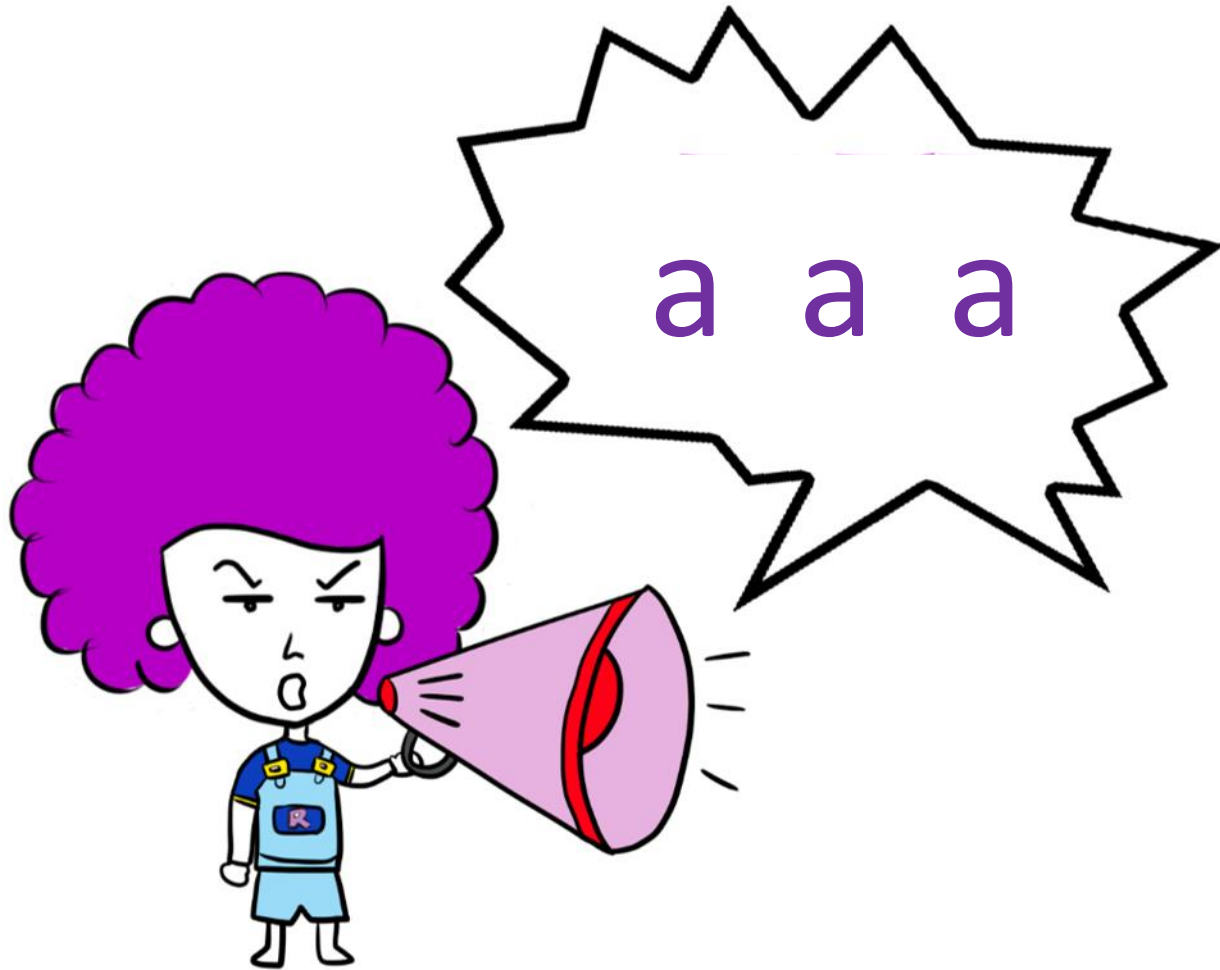
/o/

orange

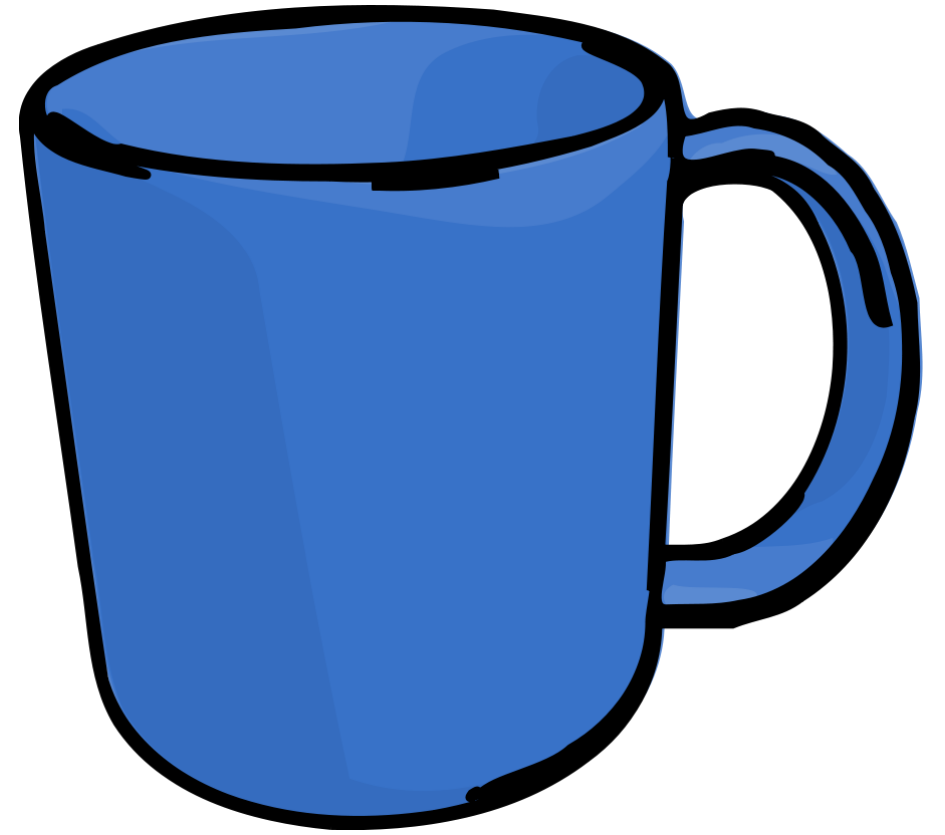
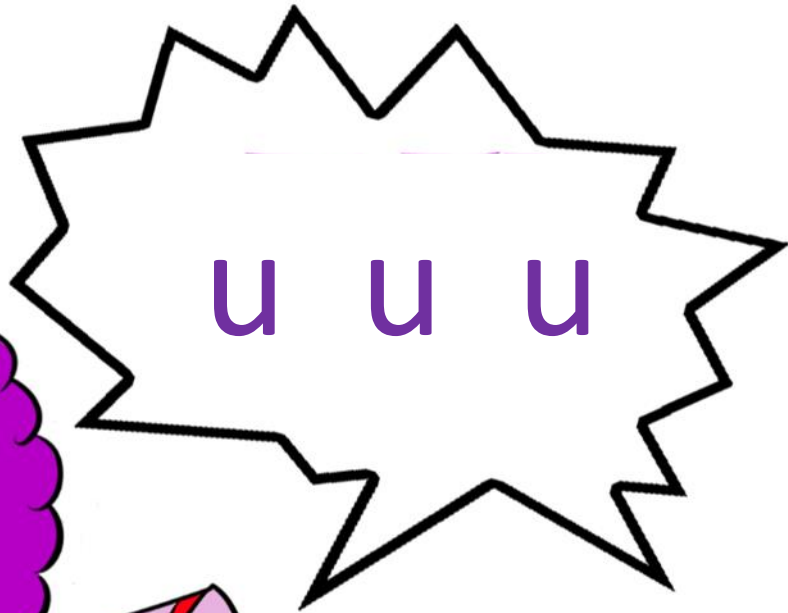




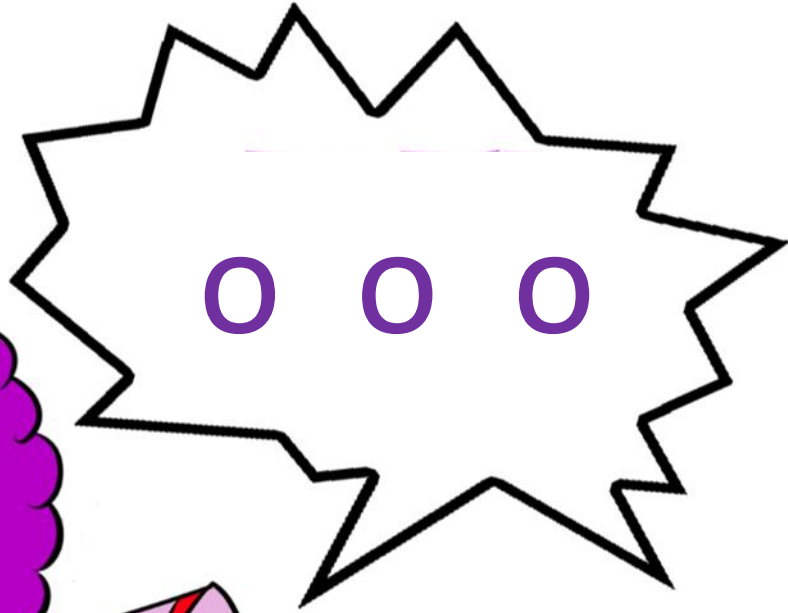
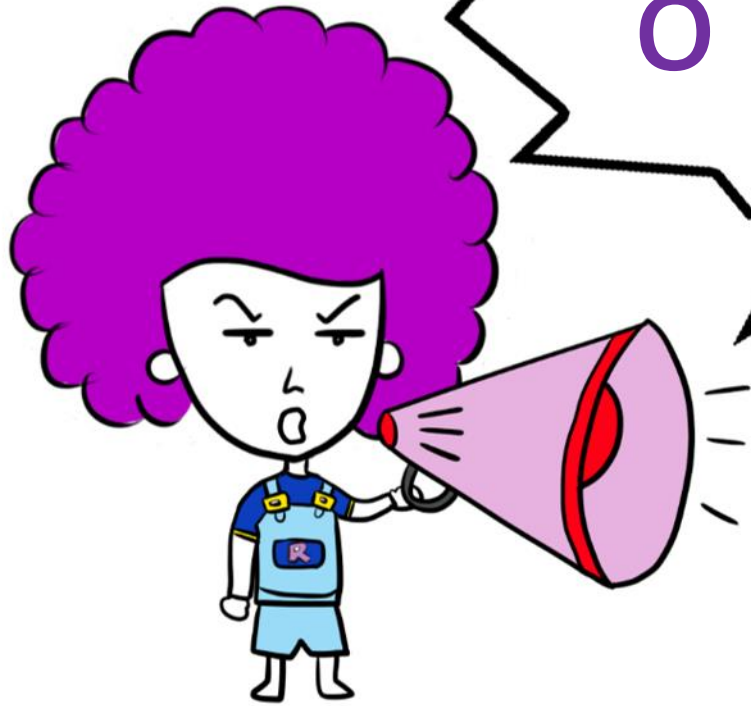
swan



/u/



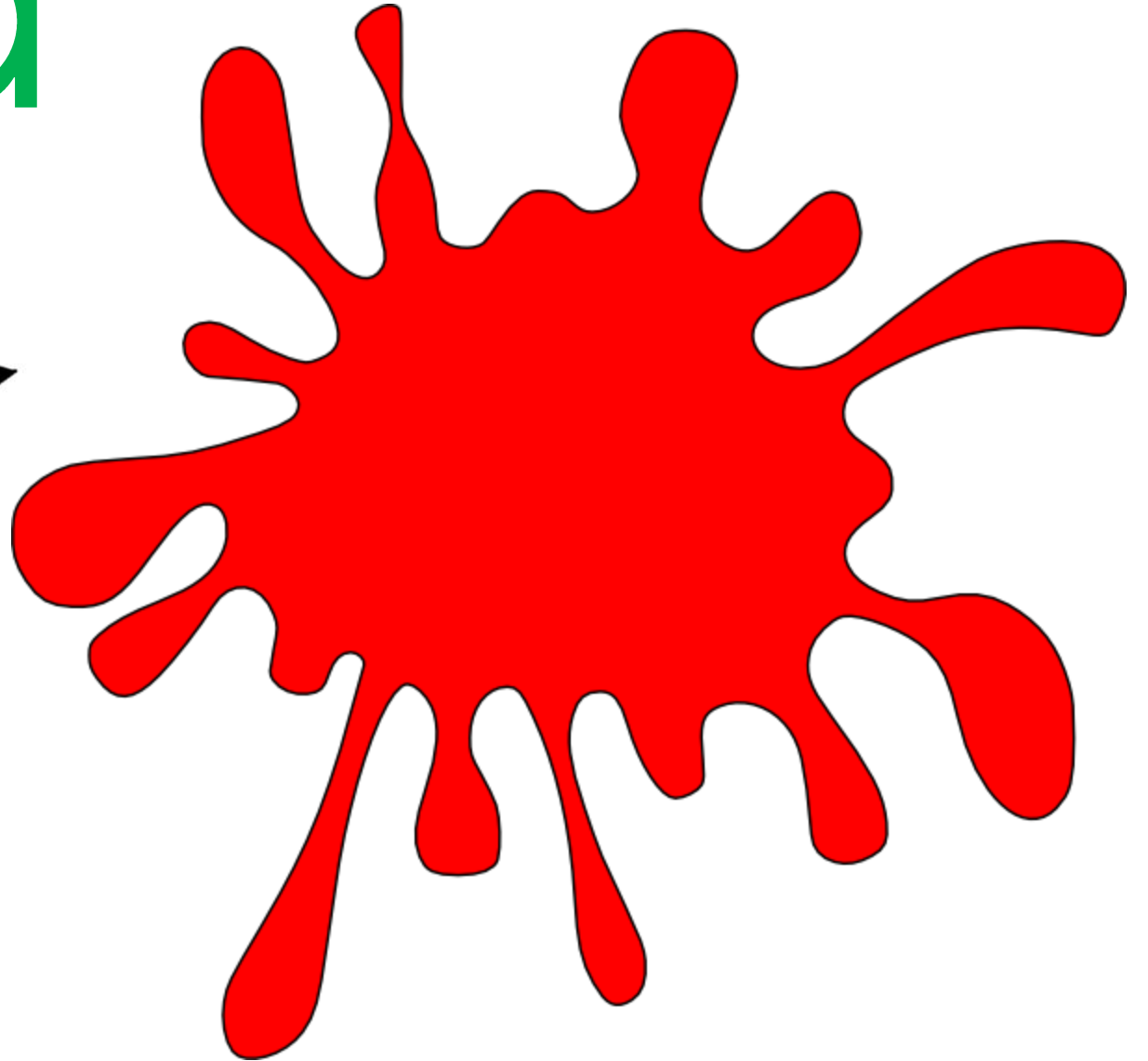
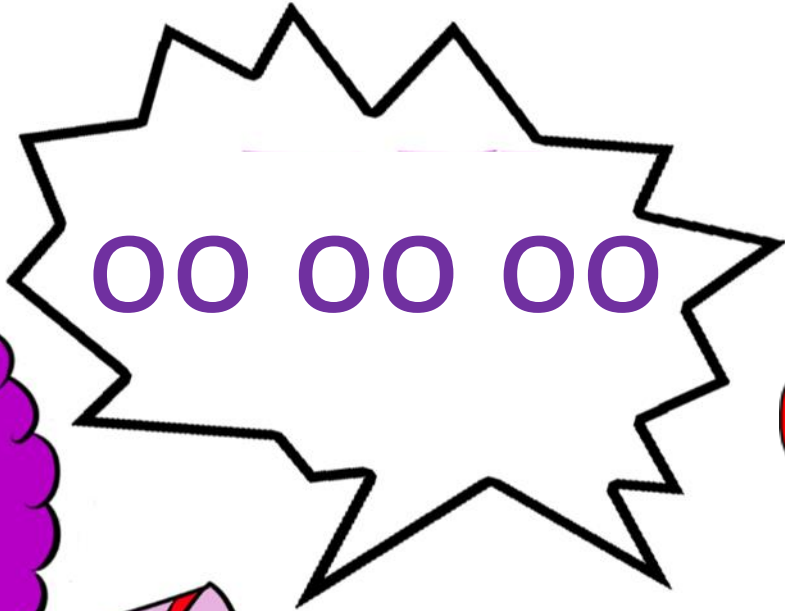
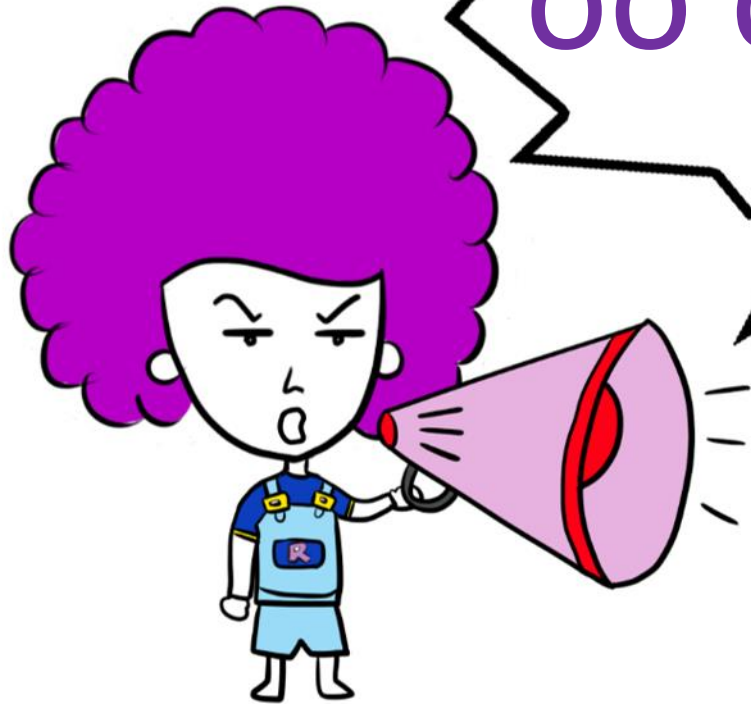
mug



monkey

blood

oo oo oo



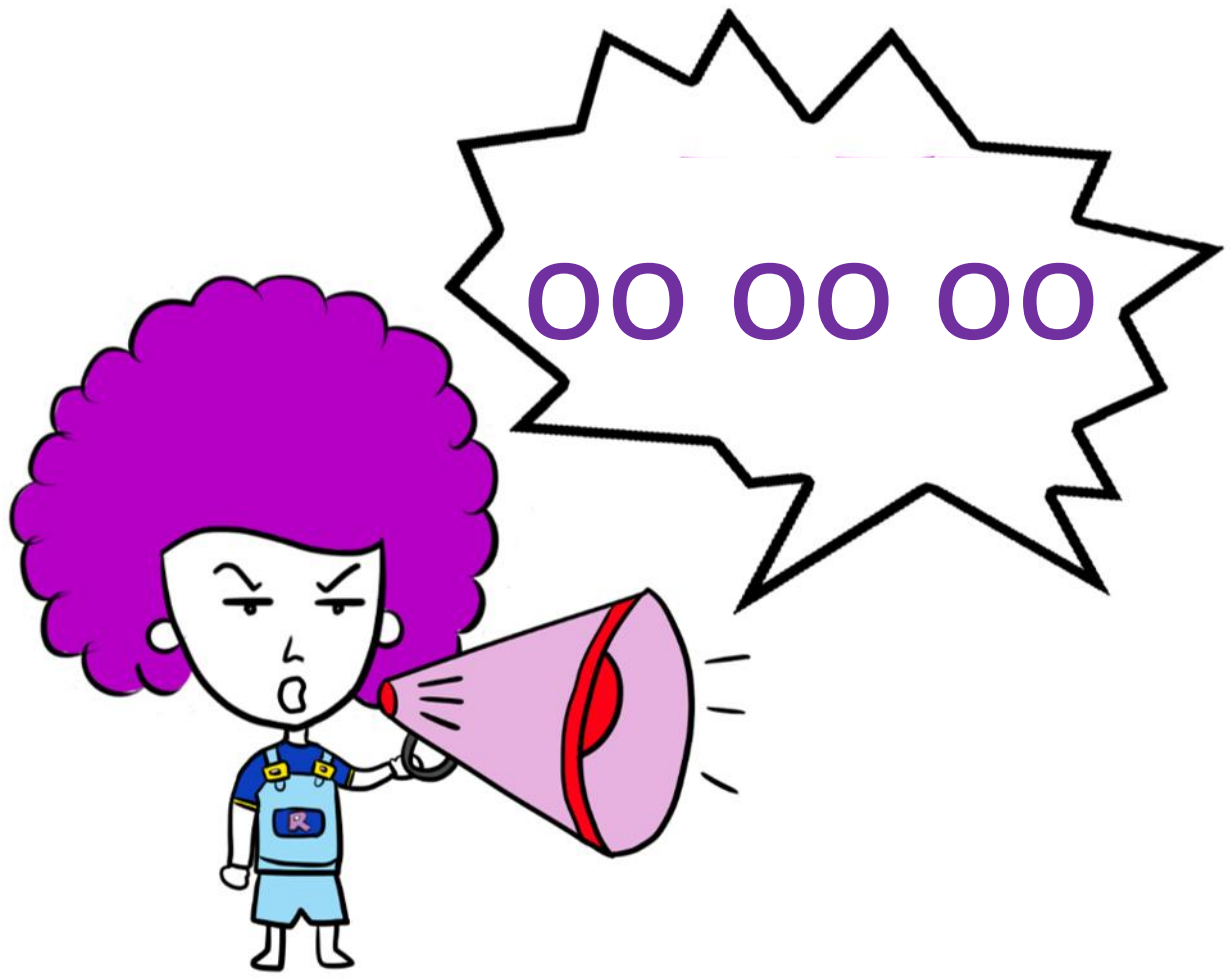


ou ou ou



trouble

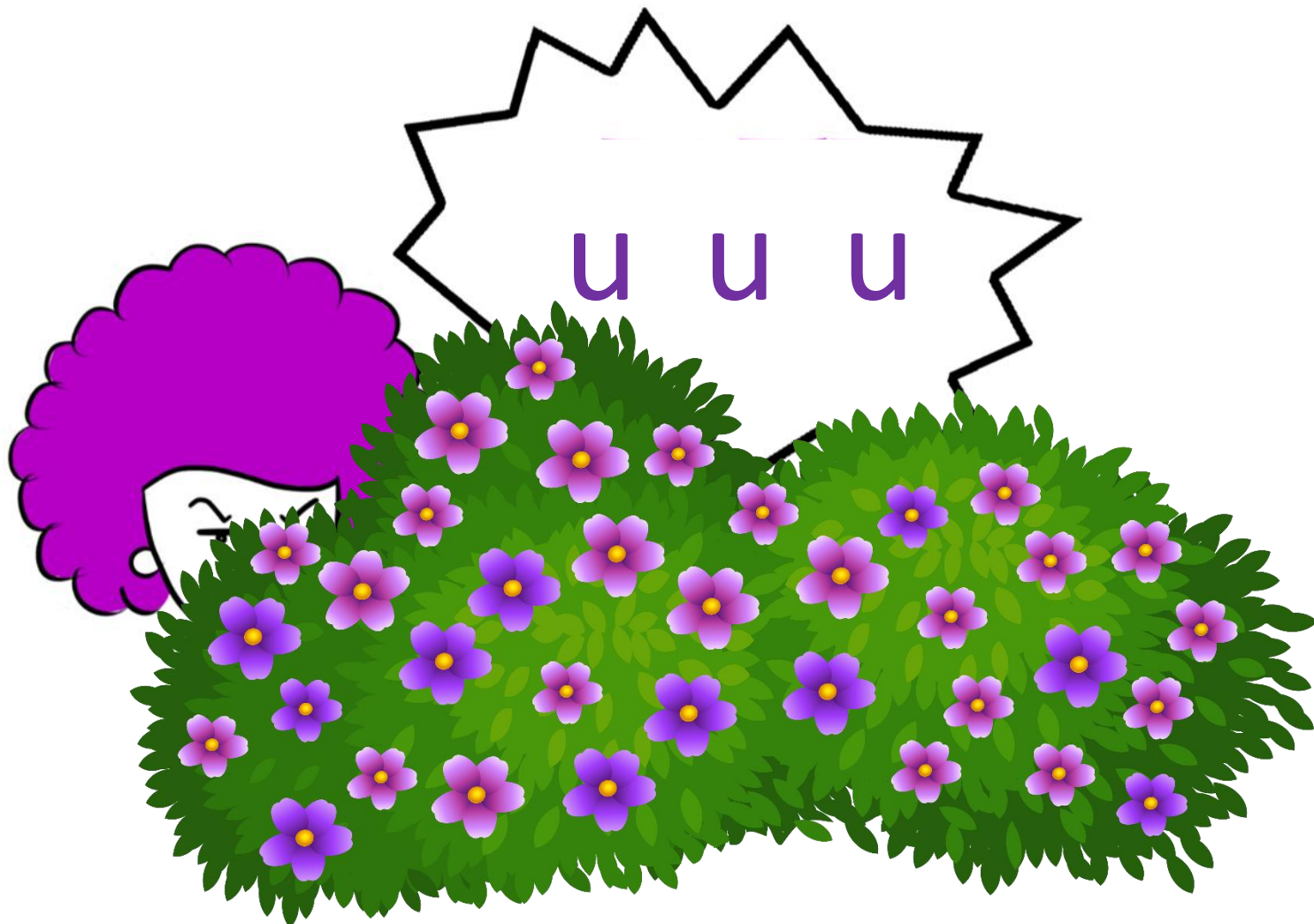
/oo/



book







bush

could

ou ou ou



~~SHOULD~~

~~WOULD~~

~~COULD~~



DID.

