

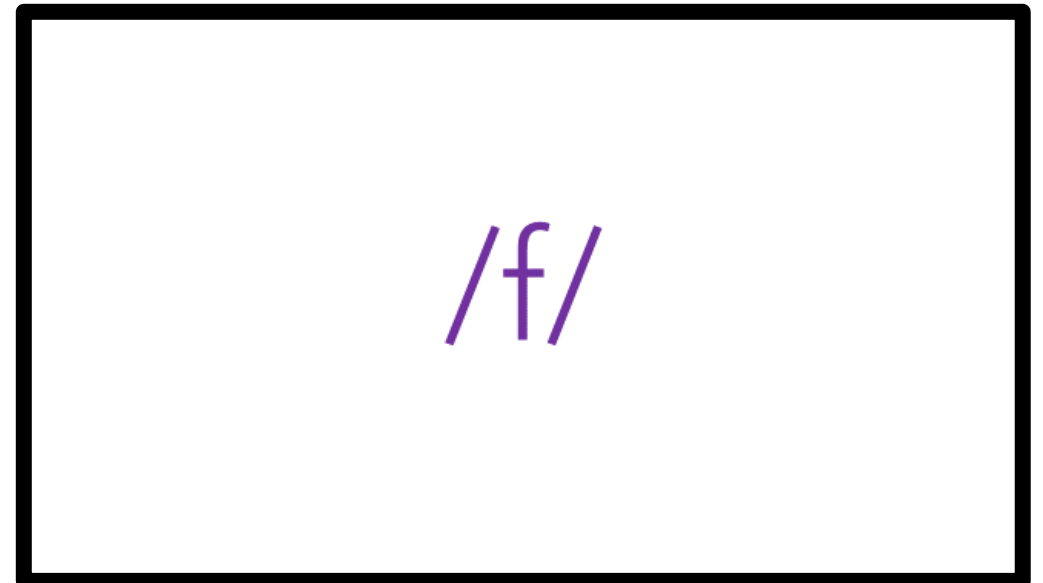


Consonants
Printable
Flashcards

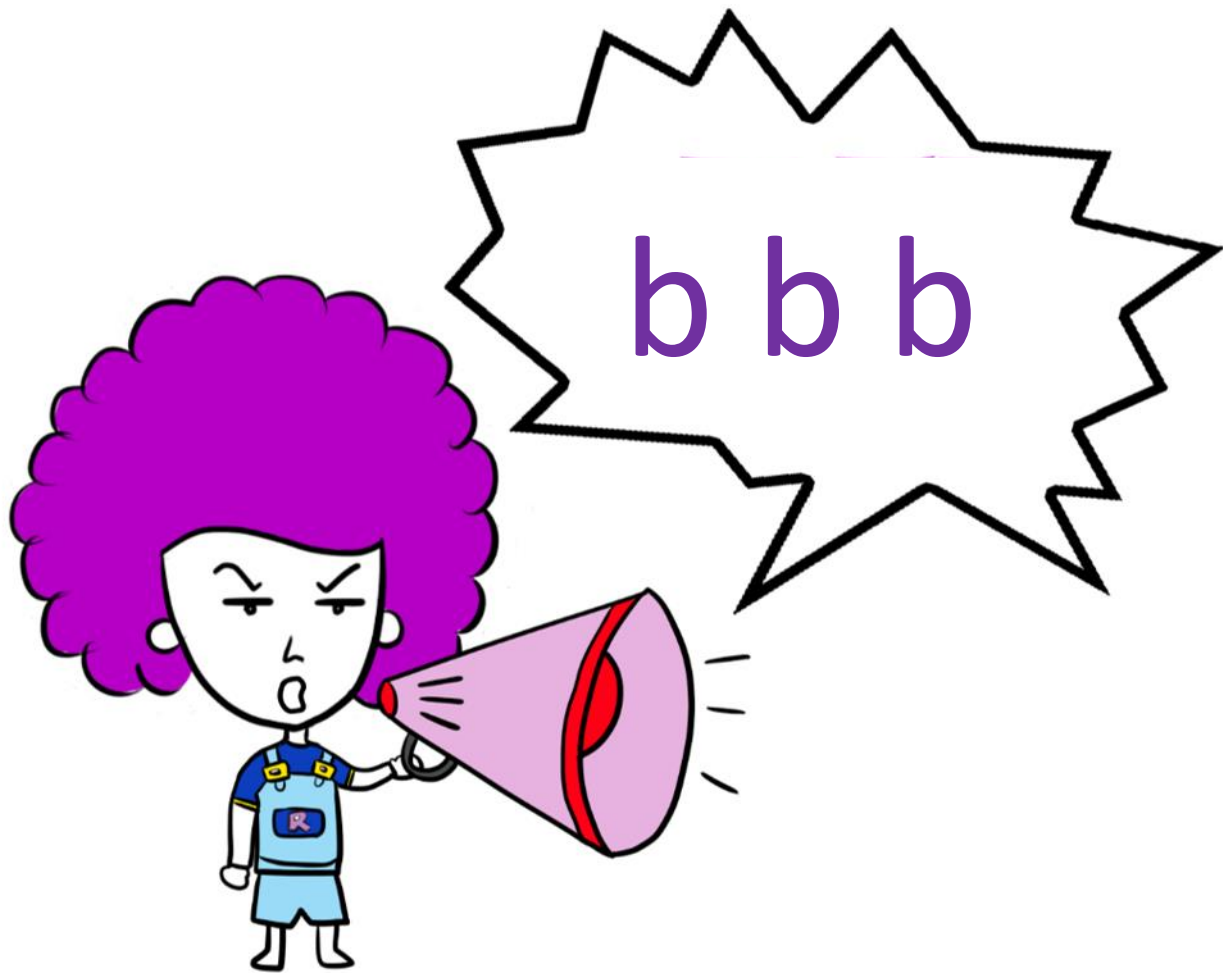
Can you match the picture flashcards to the sound cards...?



=

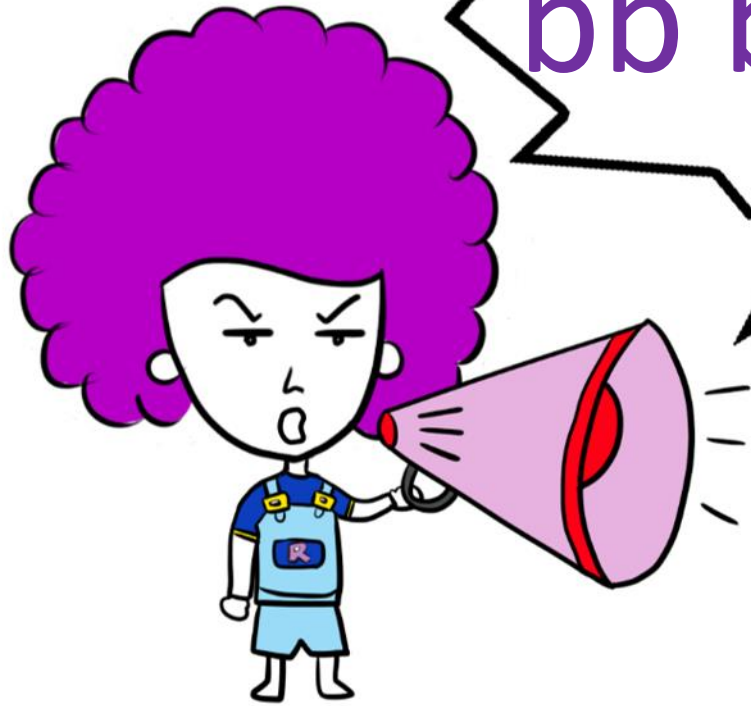


/b/



b all





bb bb bb



ribb on

/d/

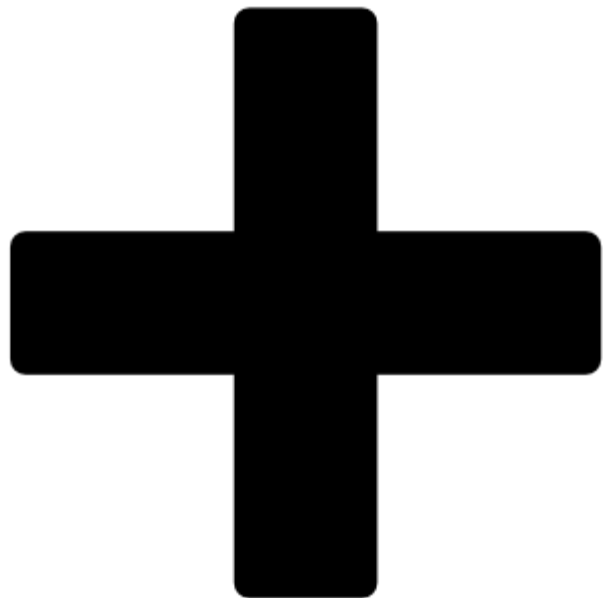
dog

d d d





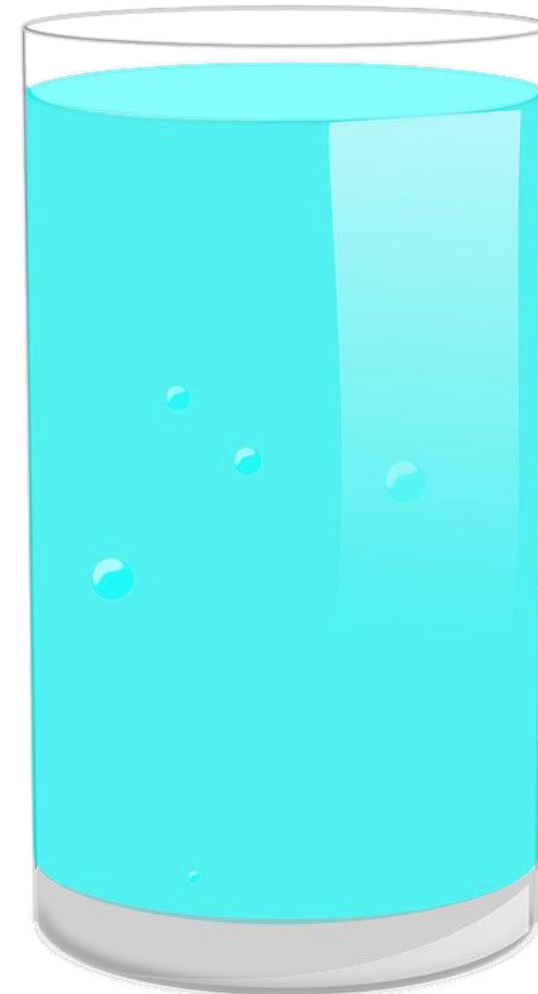
dd dd dd



a d d d

filled

ed ed ed



/f/

fan

f f f

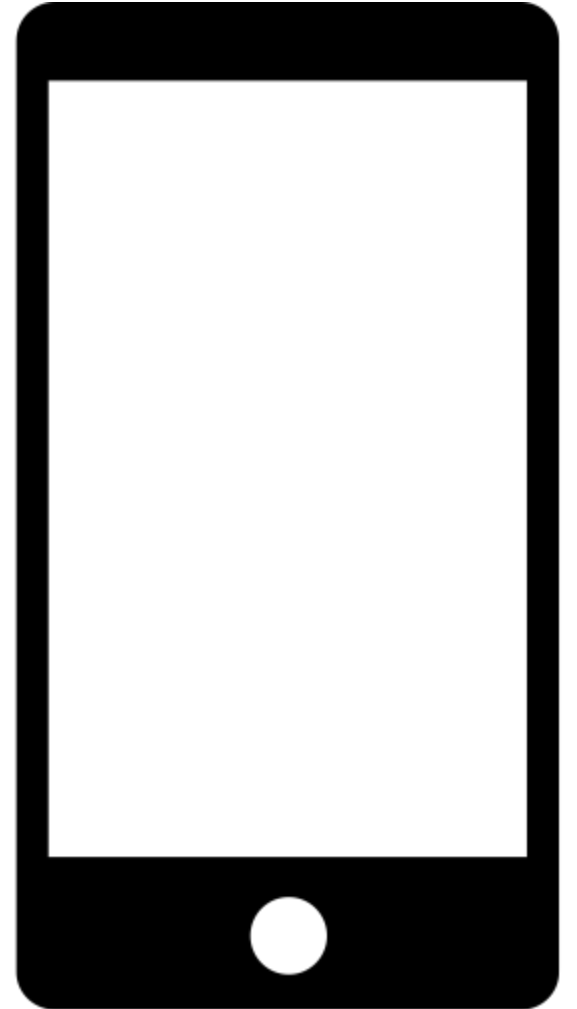


cliff



phone

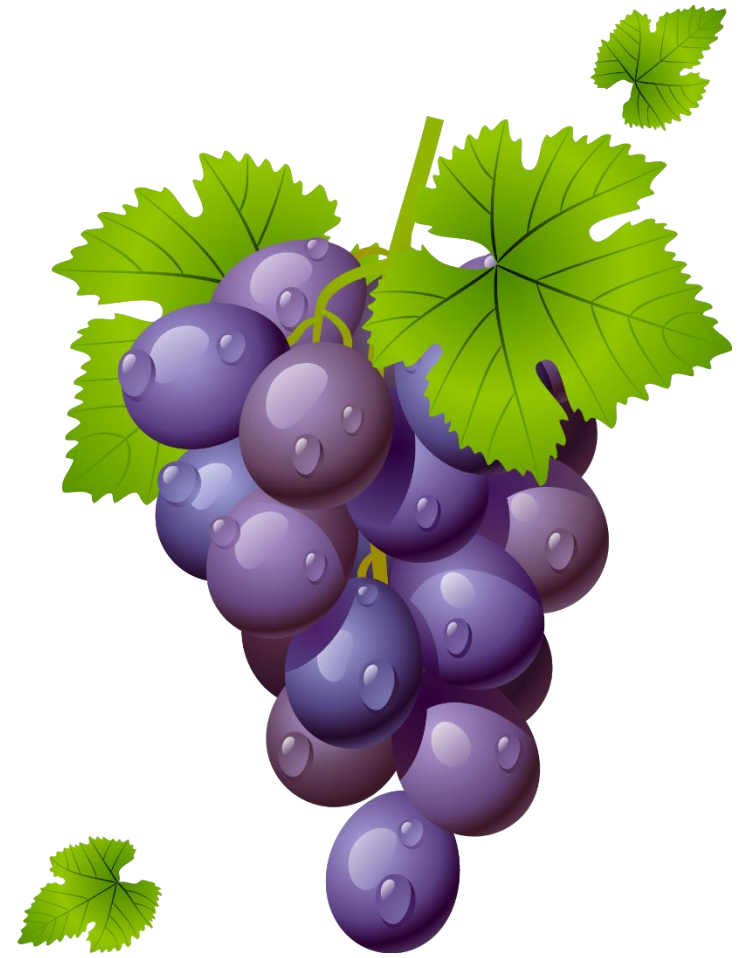
ph ph ph



laugh



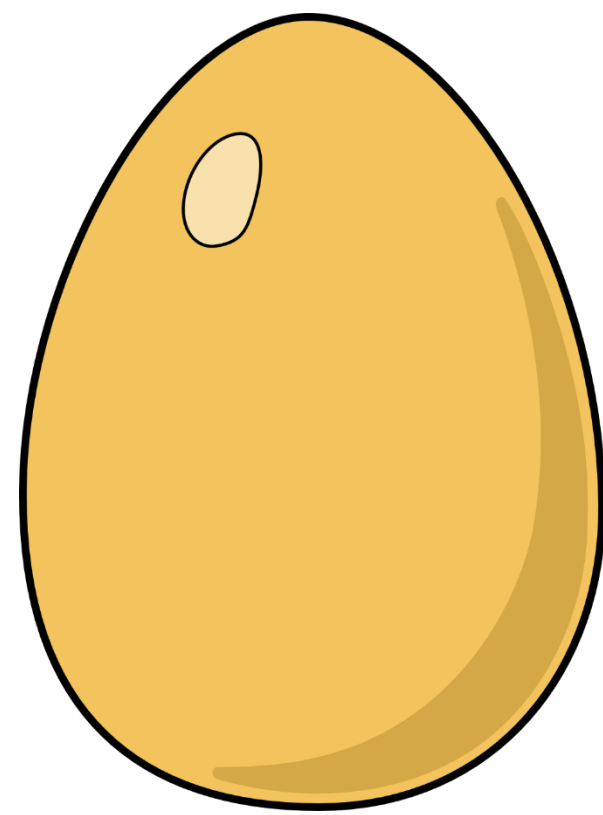
/g/



g grapes



e gg g



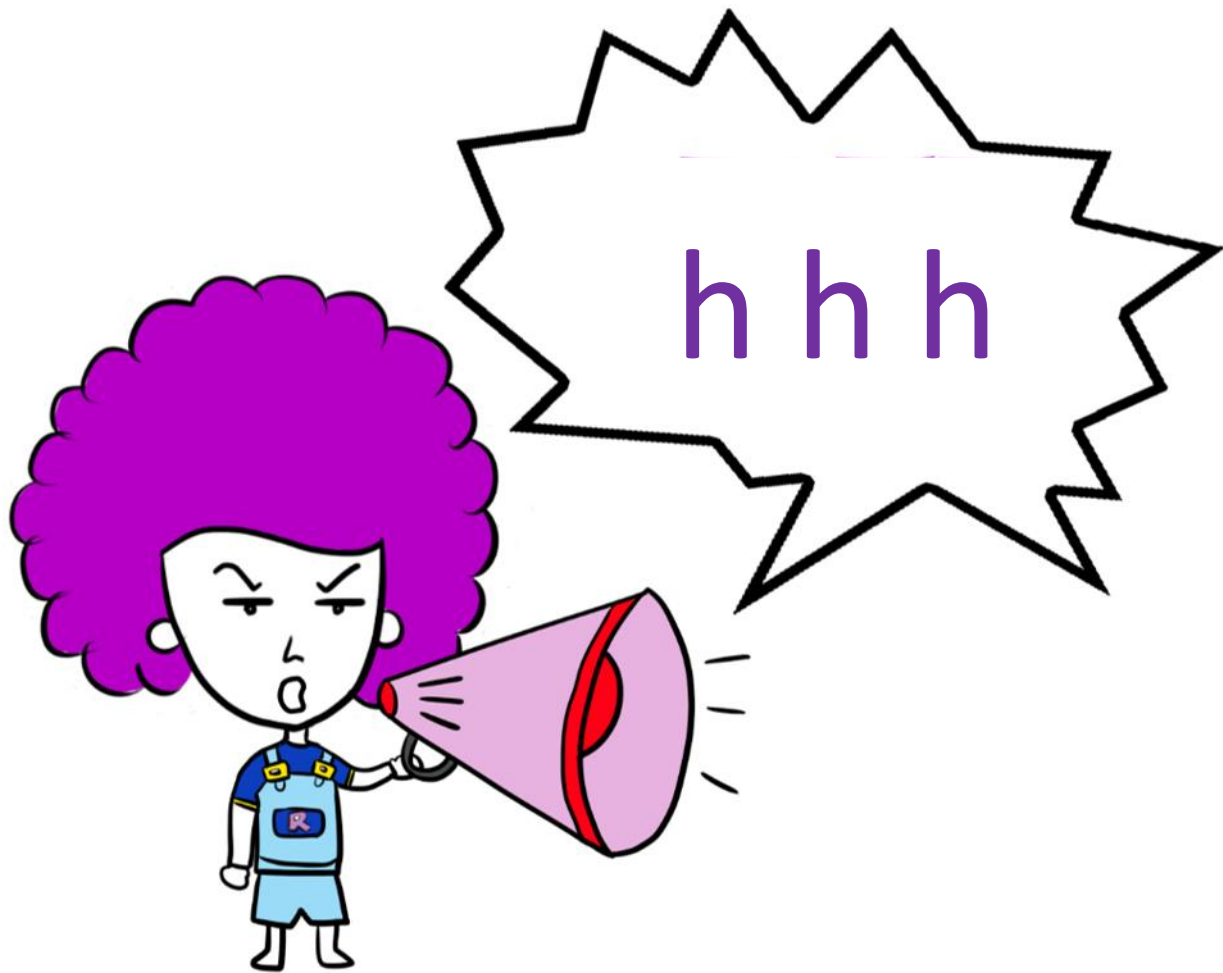


gh gh gh

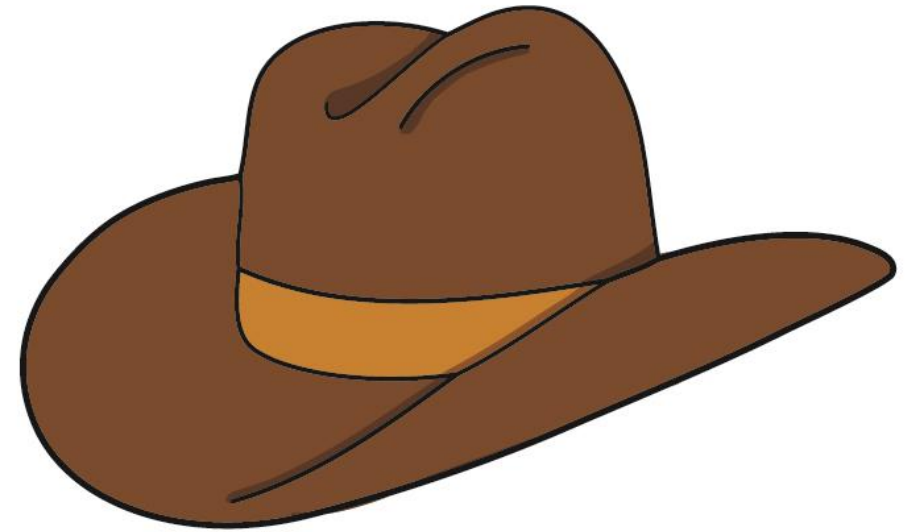


ghost

/h/



hat

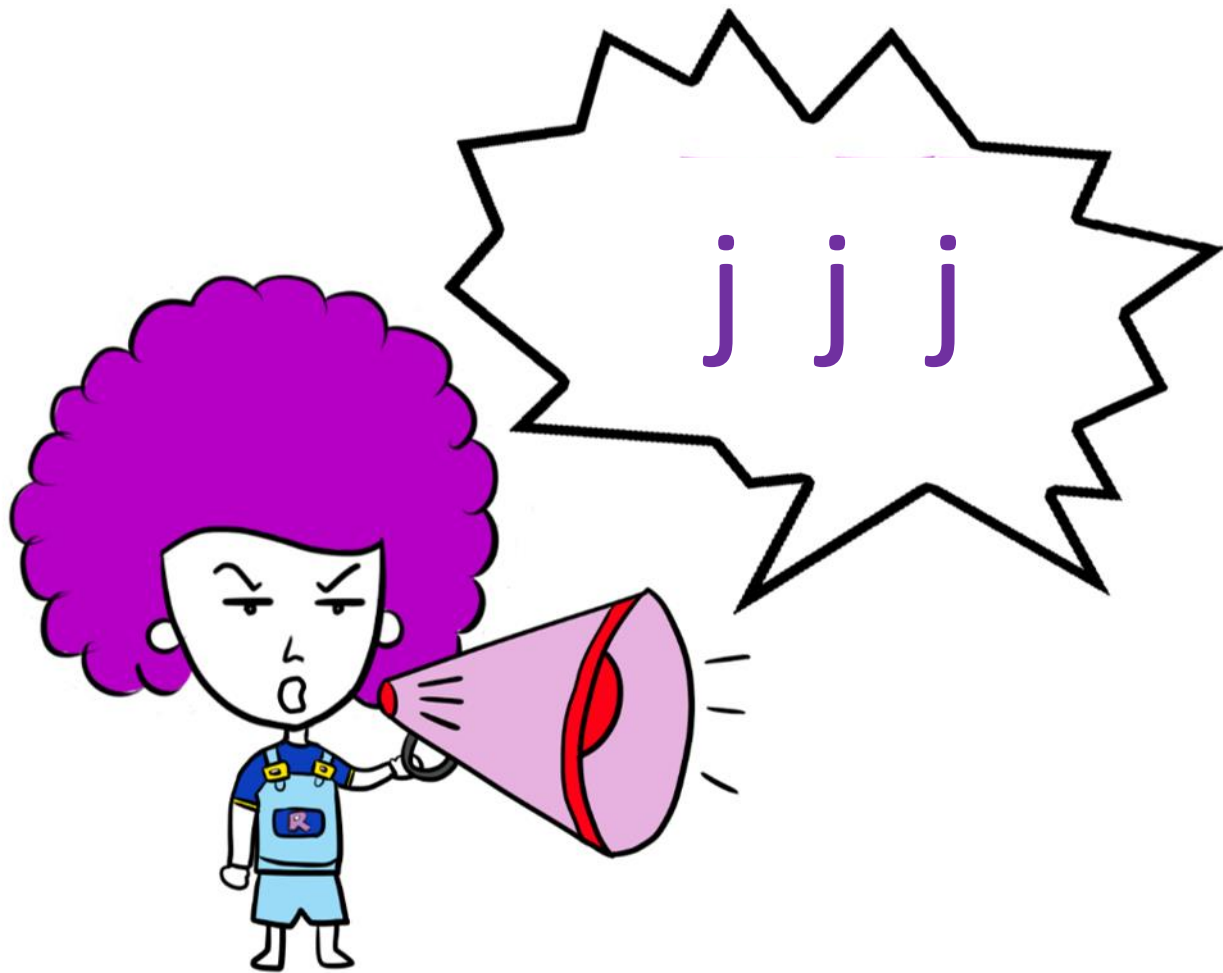




who



ijv



jelly





giraffe



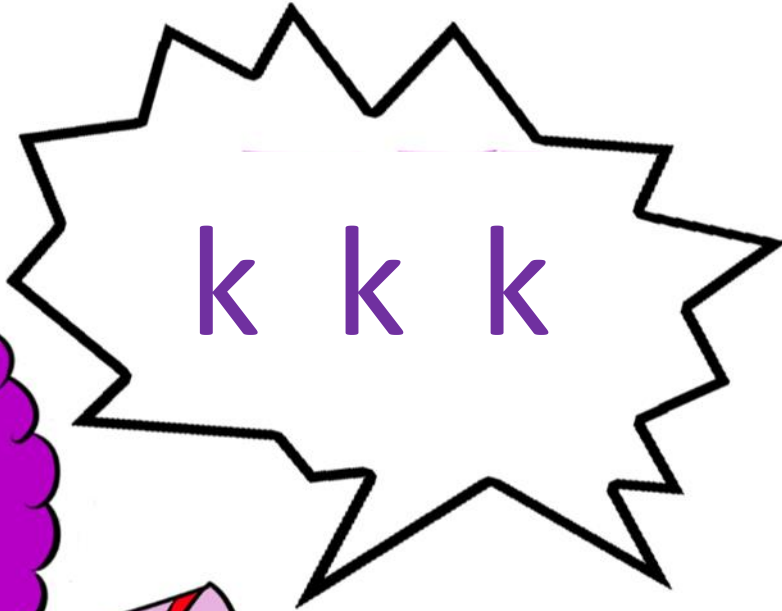
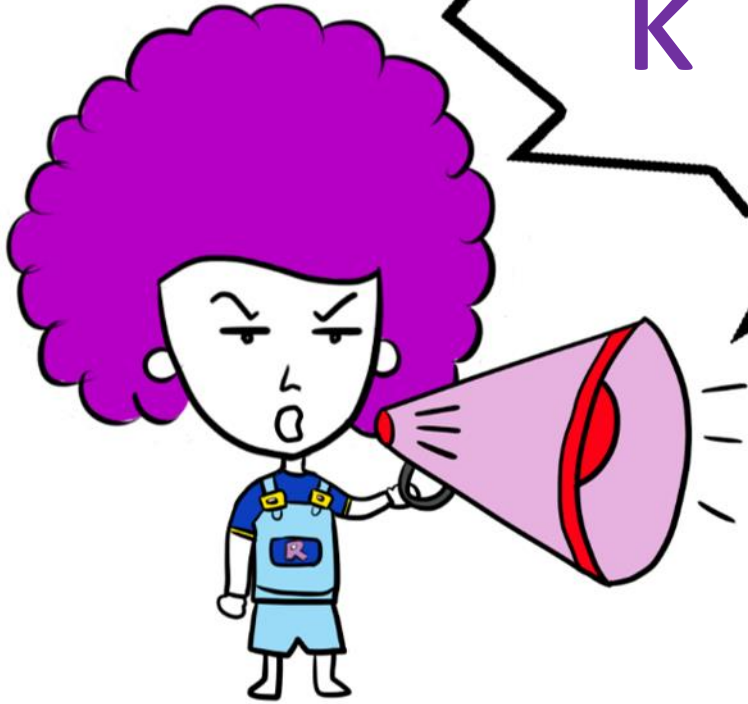


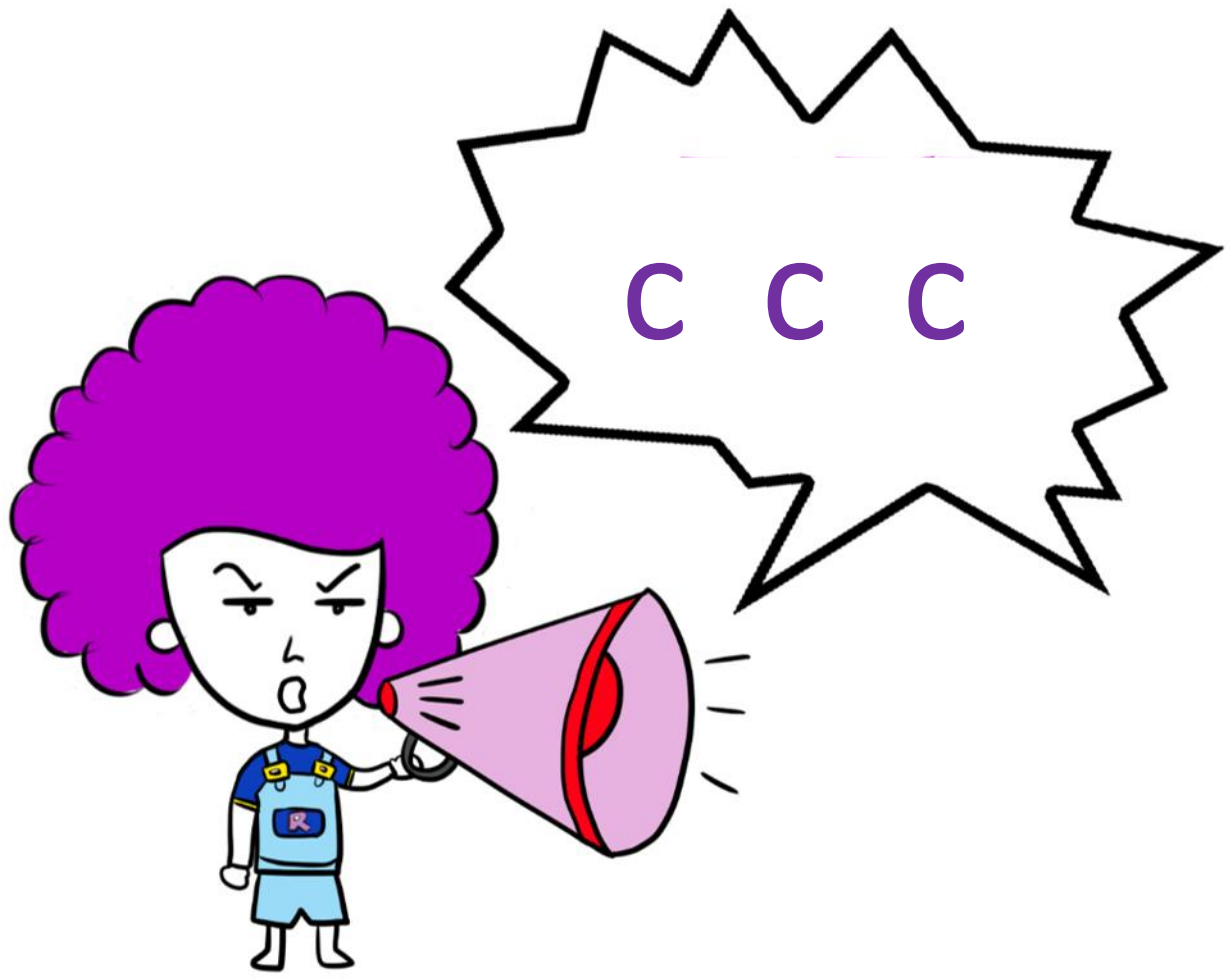
e d g e



AKW

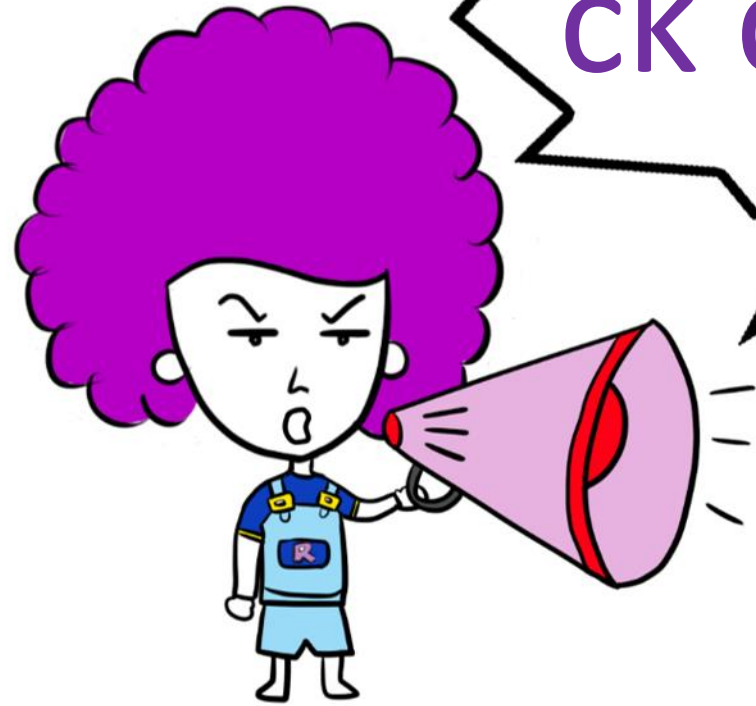
kite





cat





ck ck ck



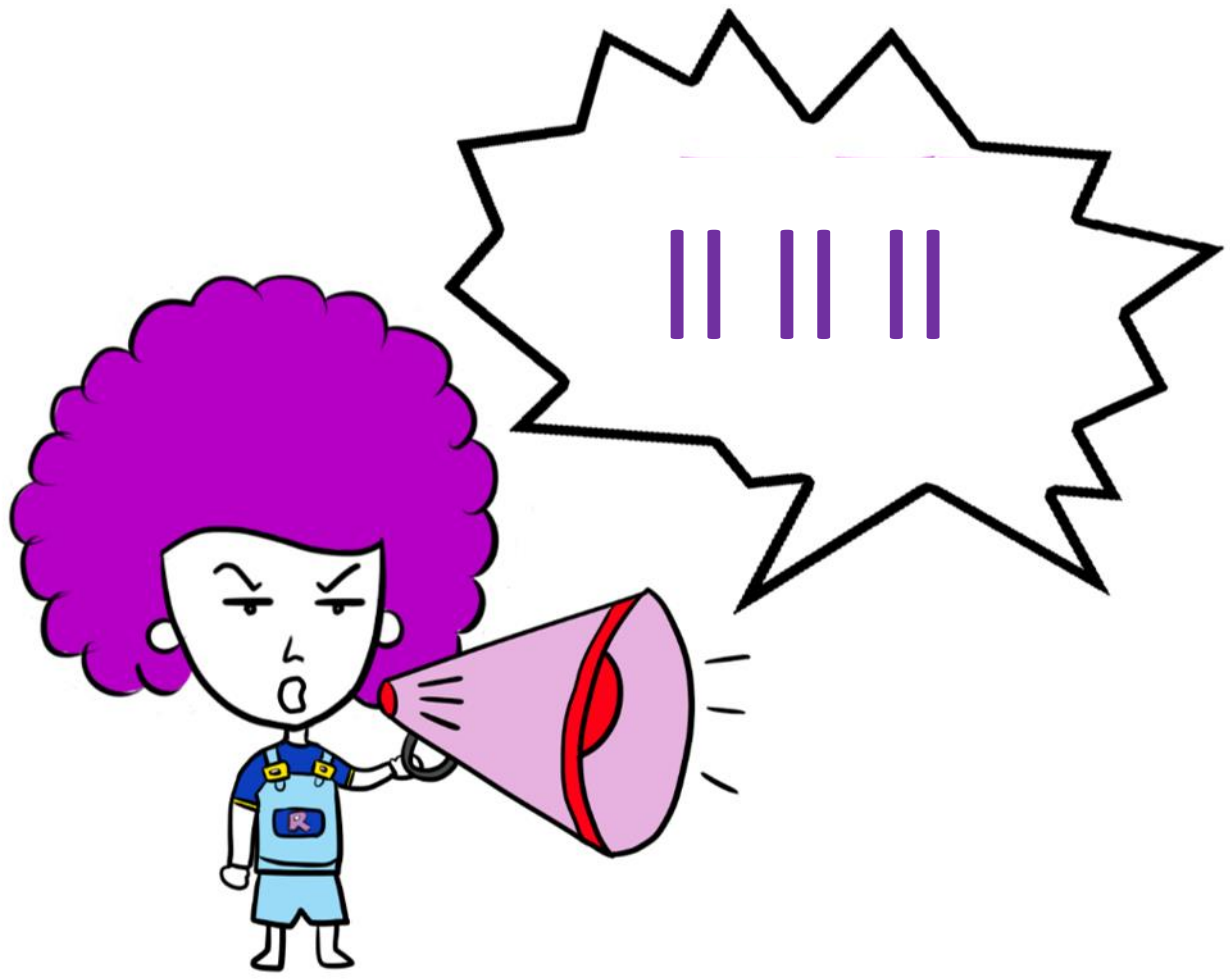
snacks





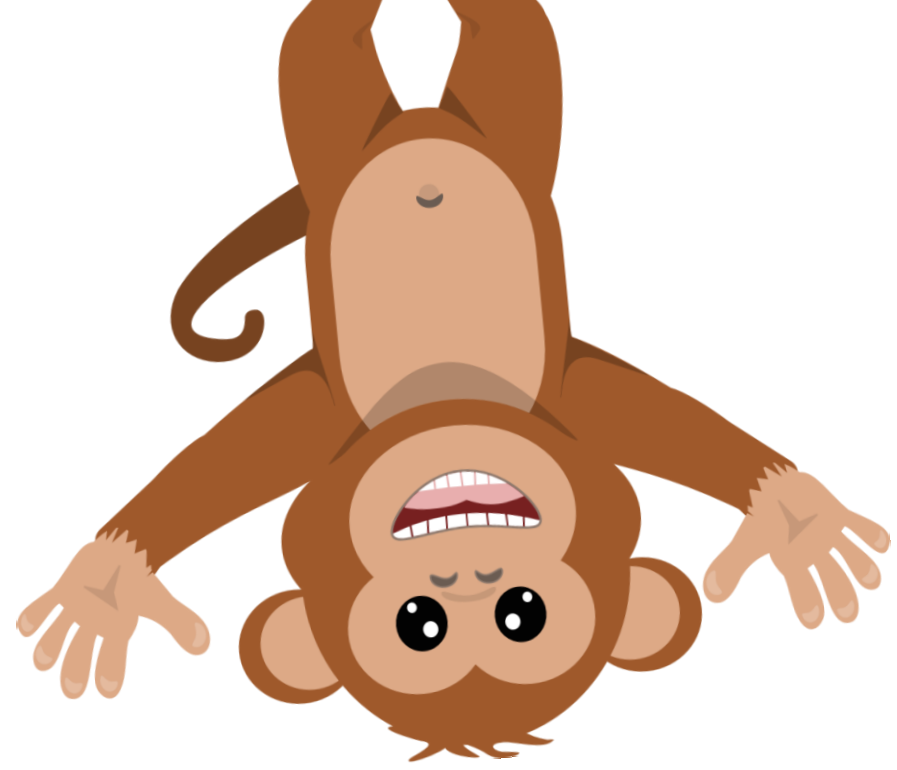
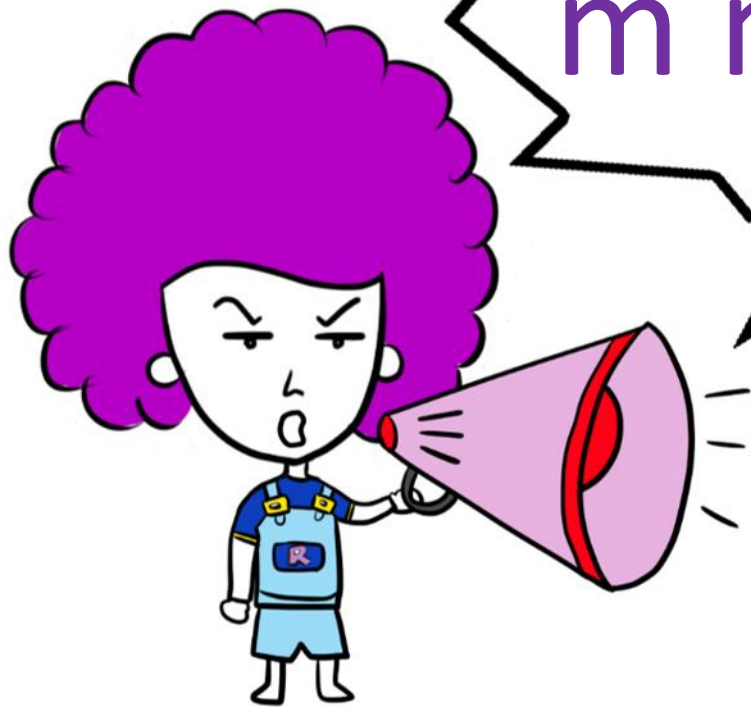
leaf



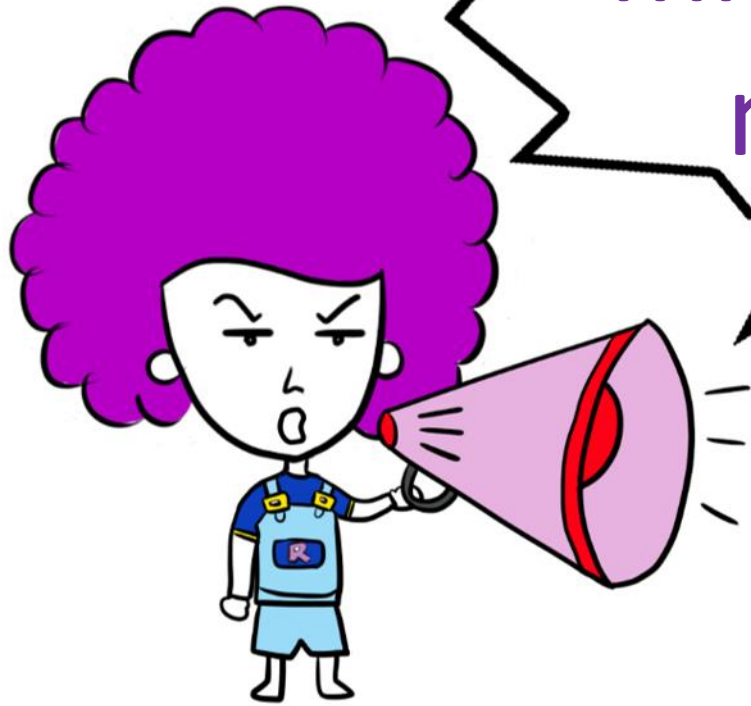


spell

/m/



monkey



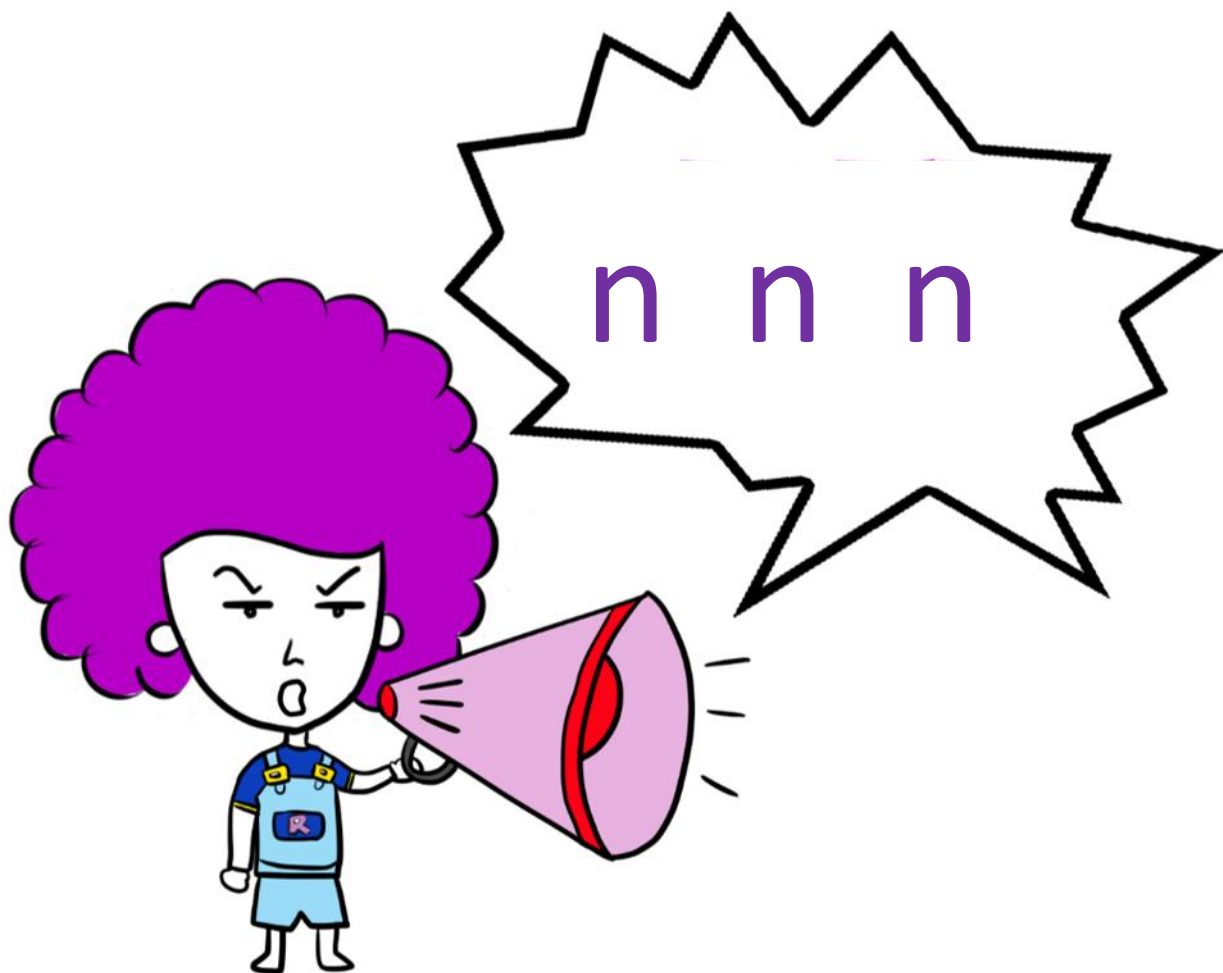
mm mm
mm

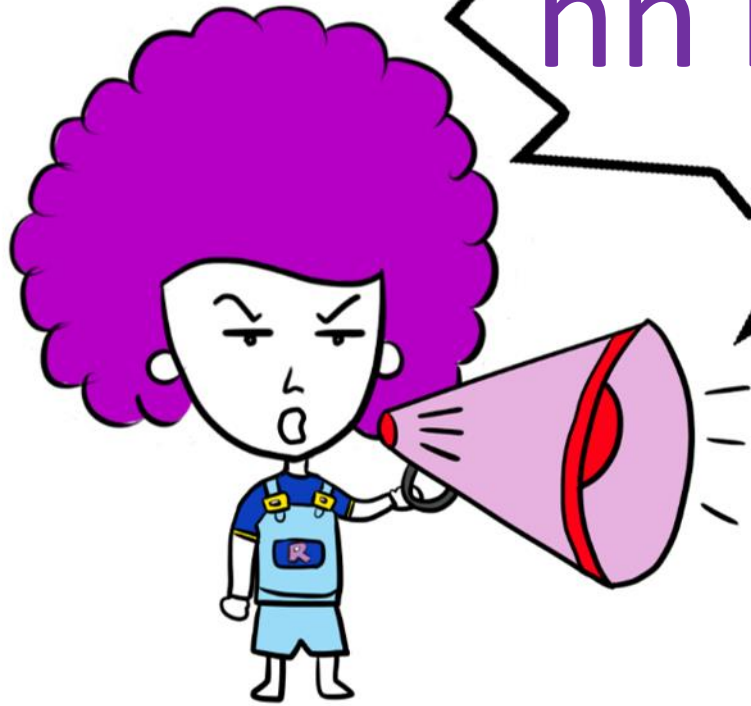


summer

/n/

nest





nn nn nn



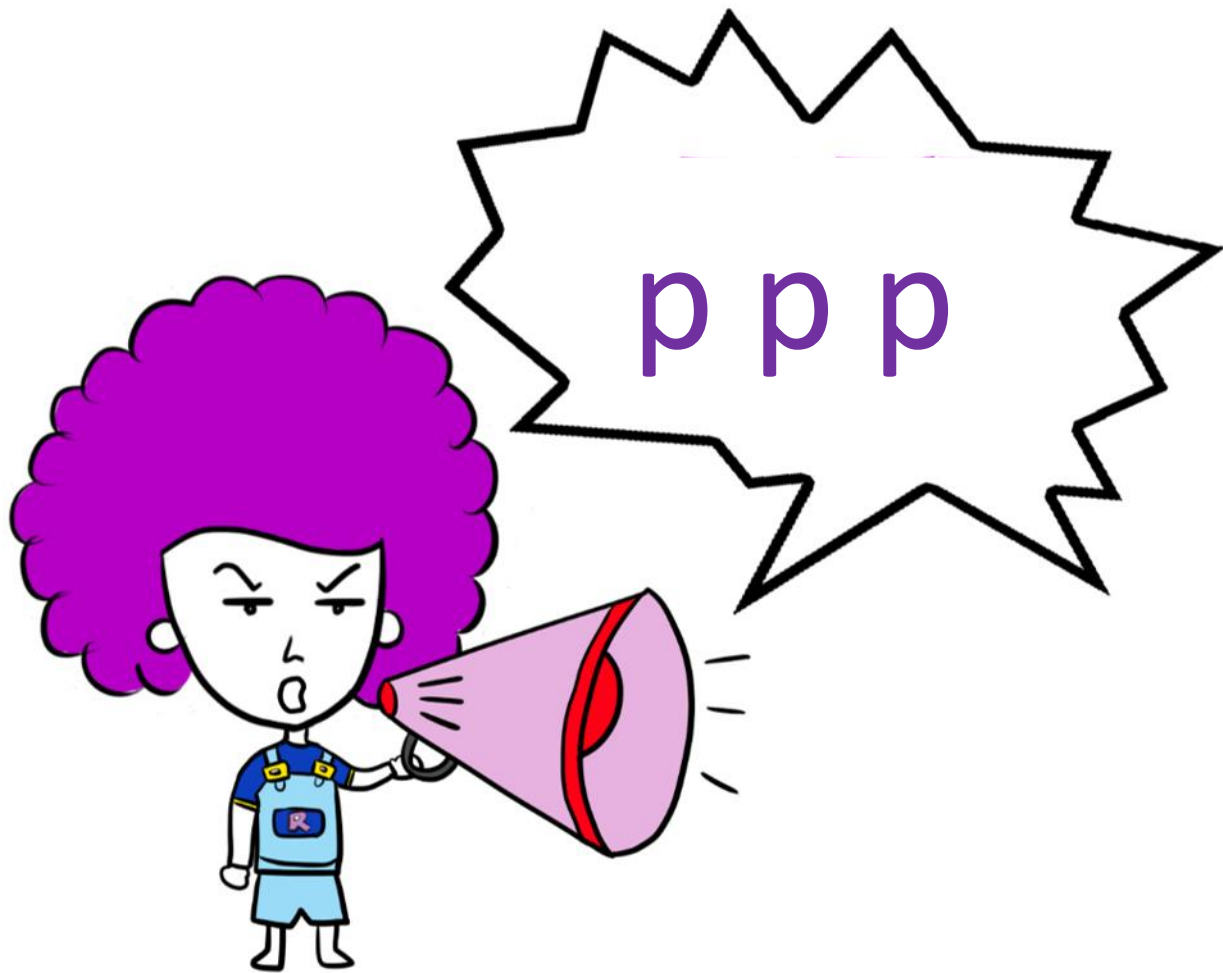
funny

/ng/

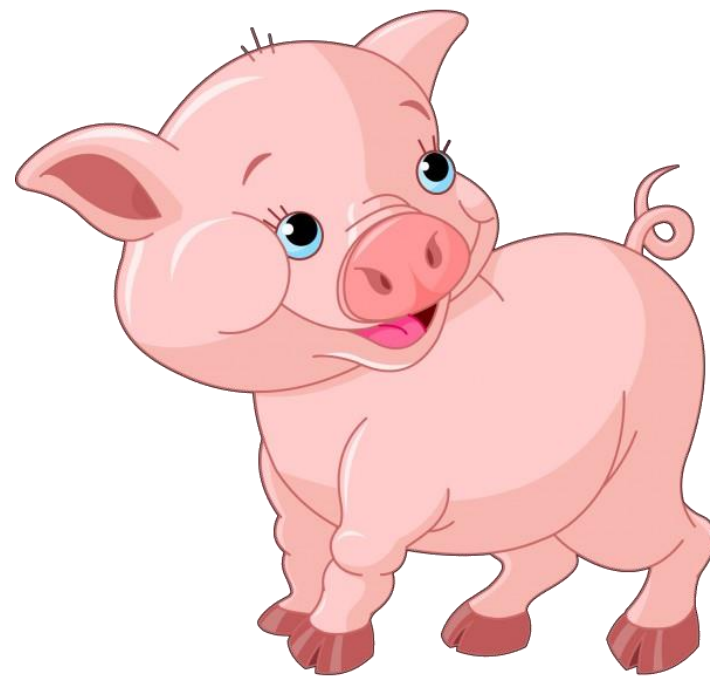


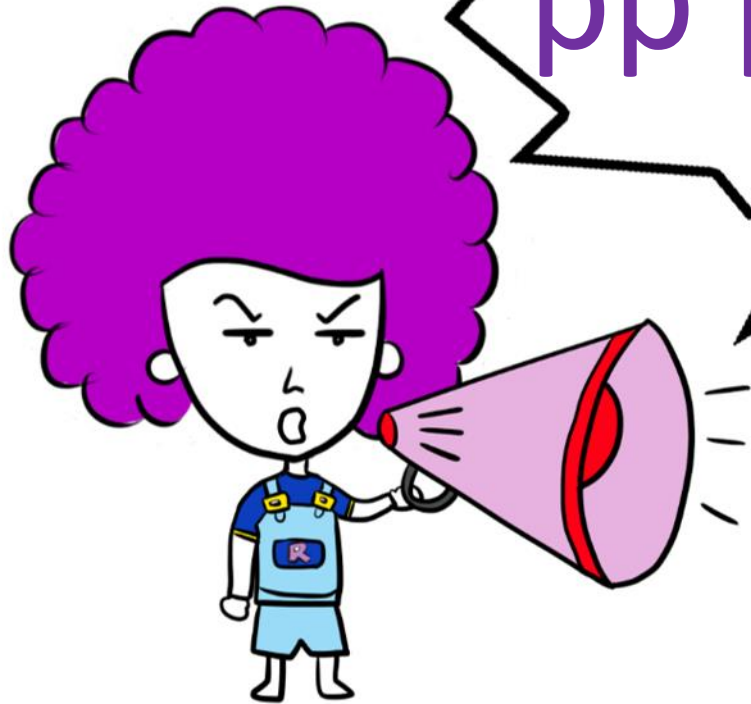
ring

/p/



pig





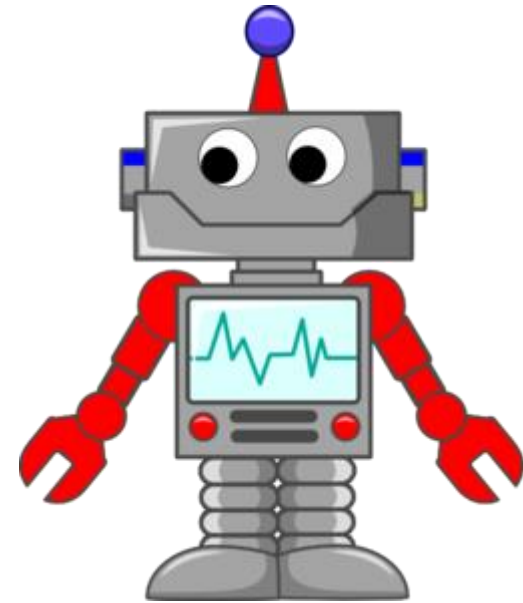
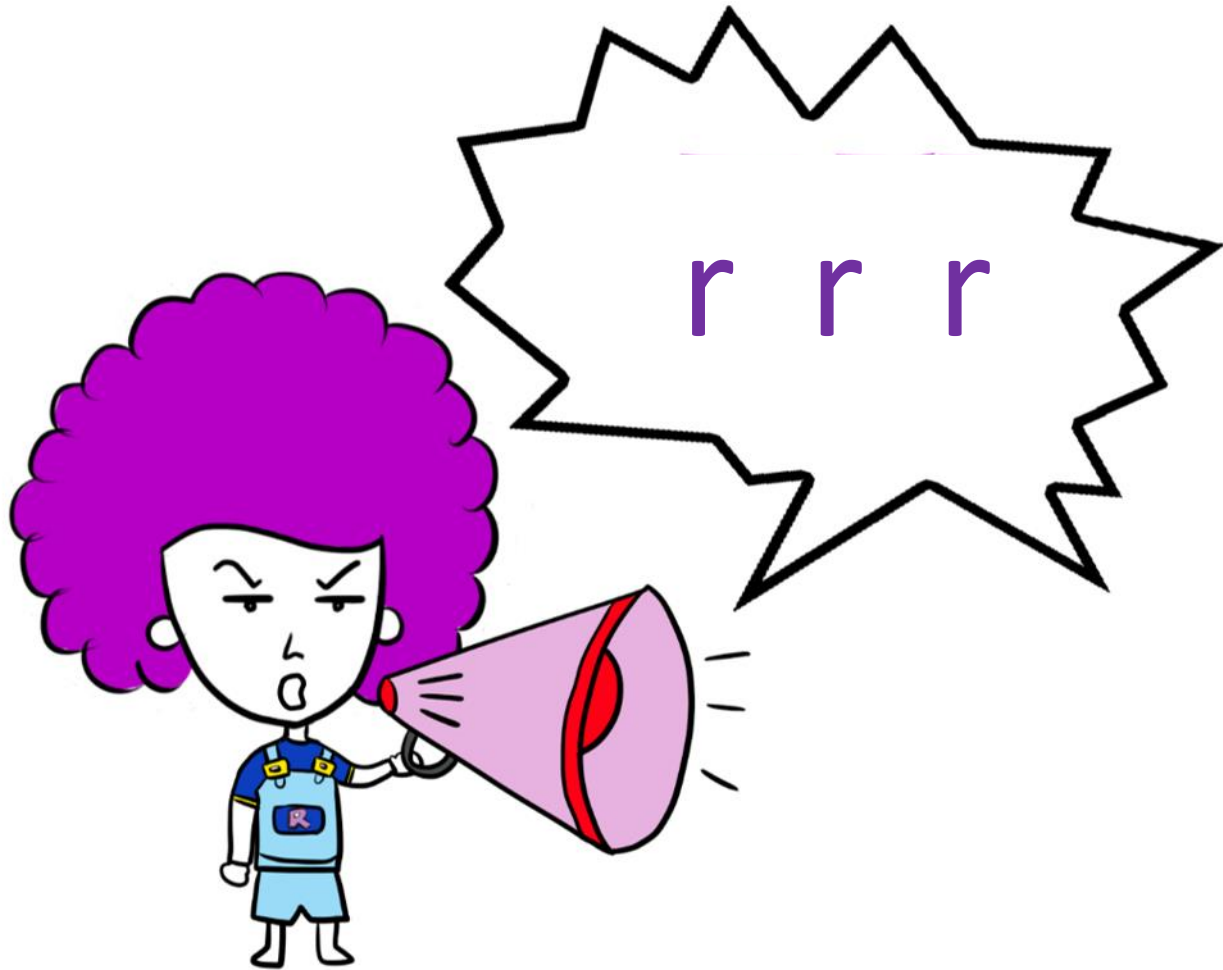
pp pp pp

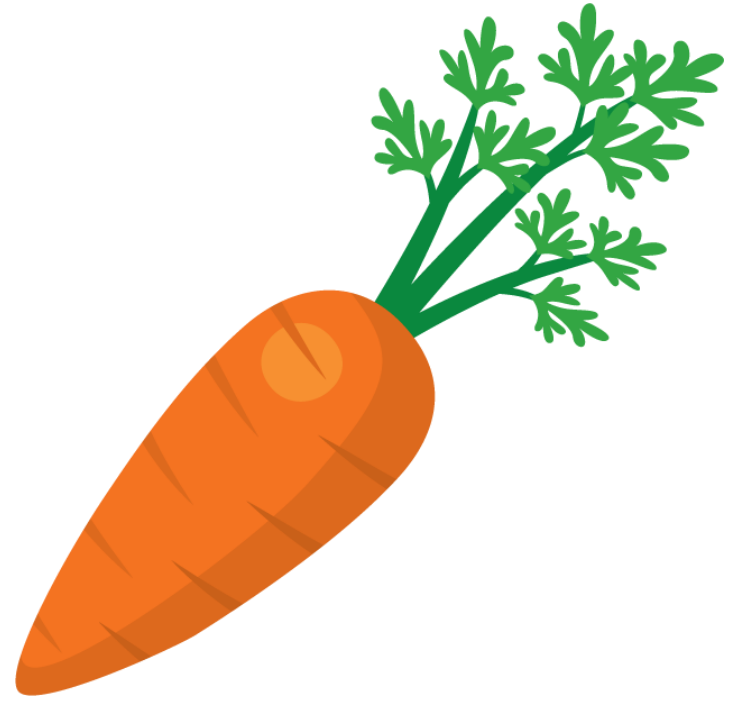
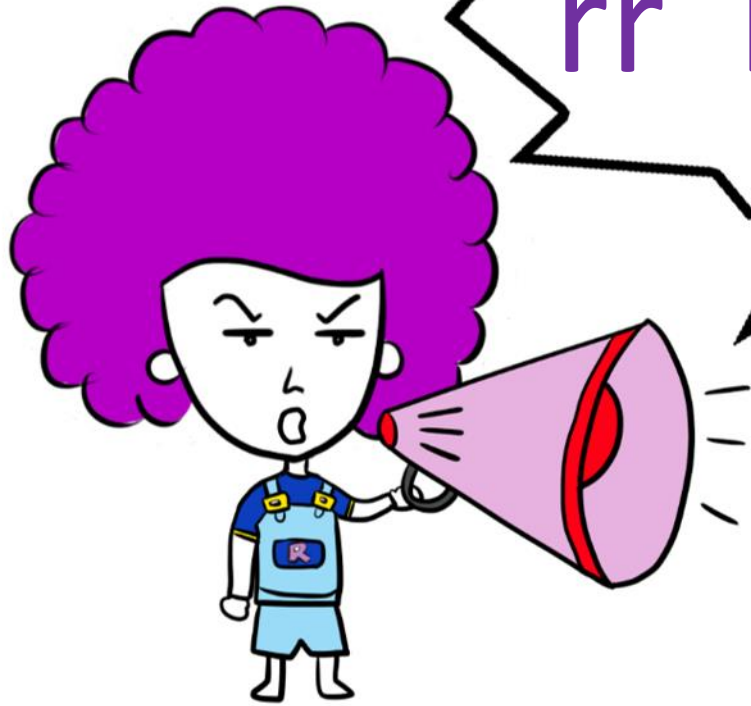


happy

/r/

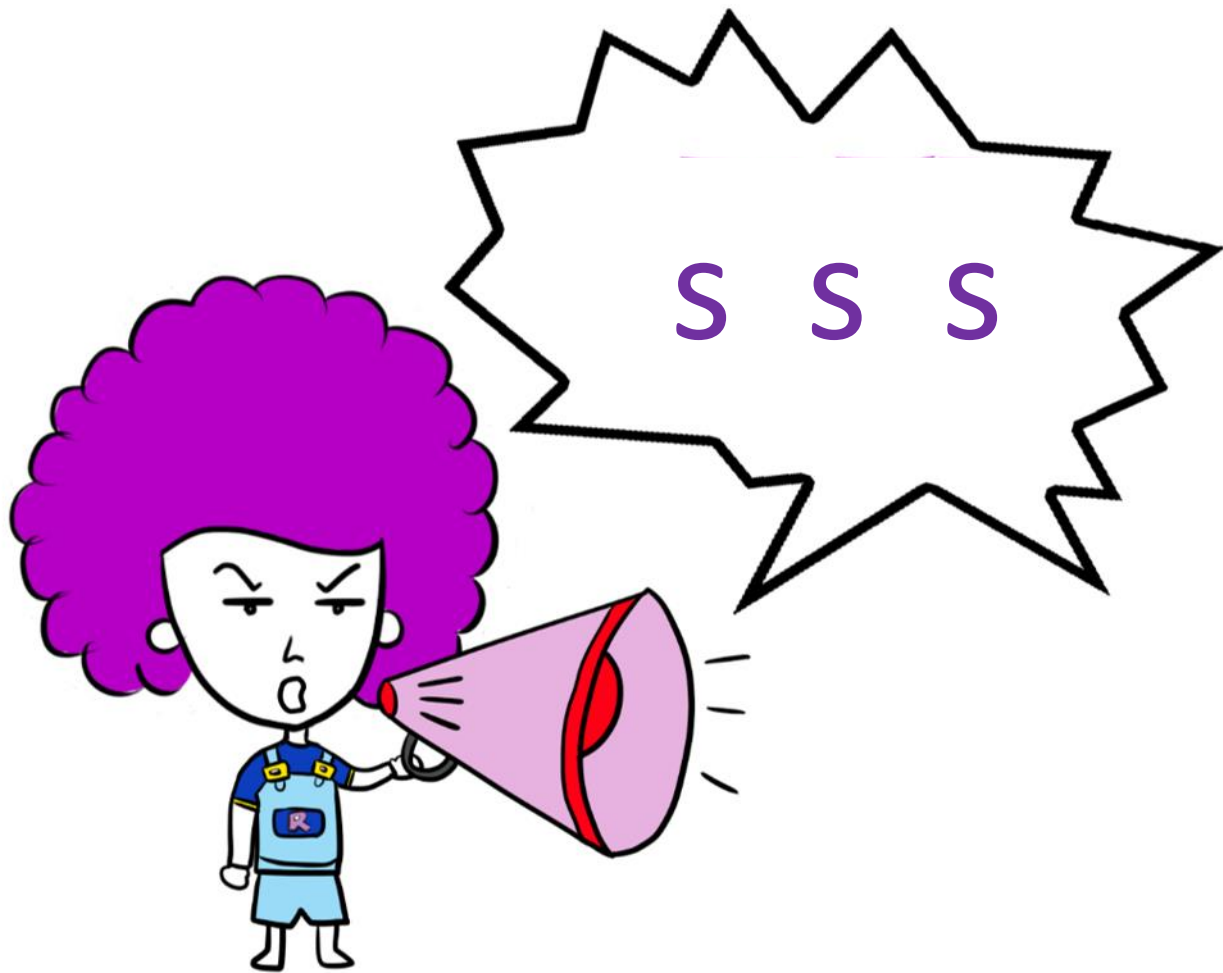
r robot





carrot

/s/



Sun

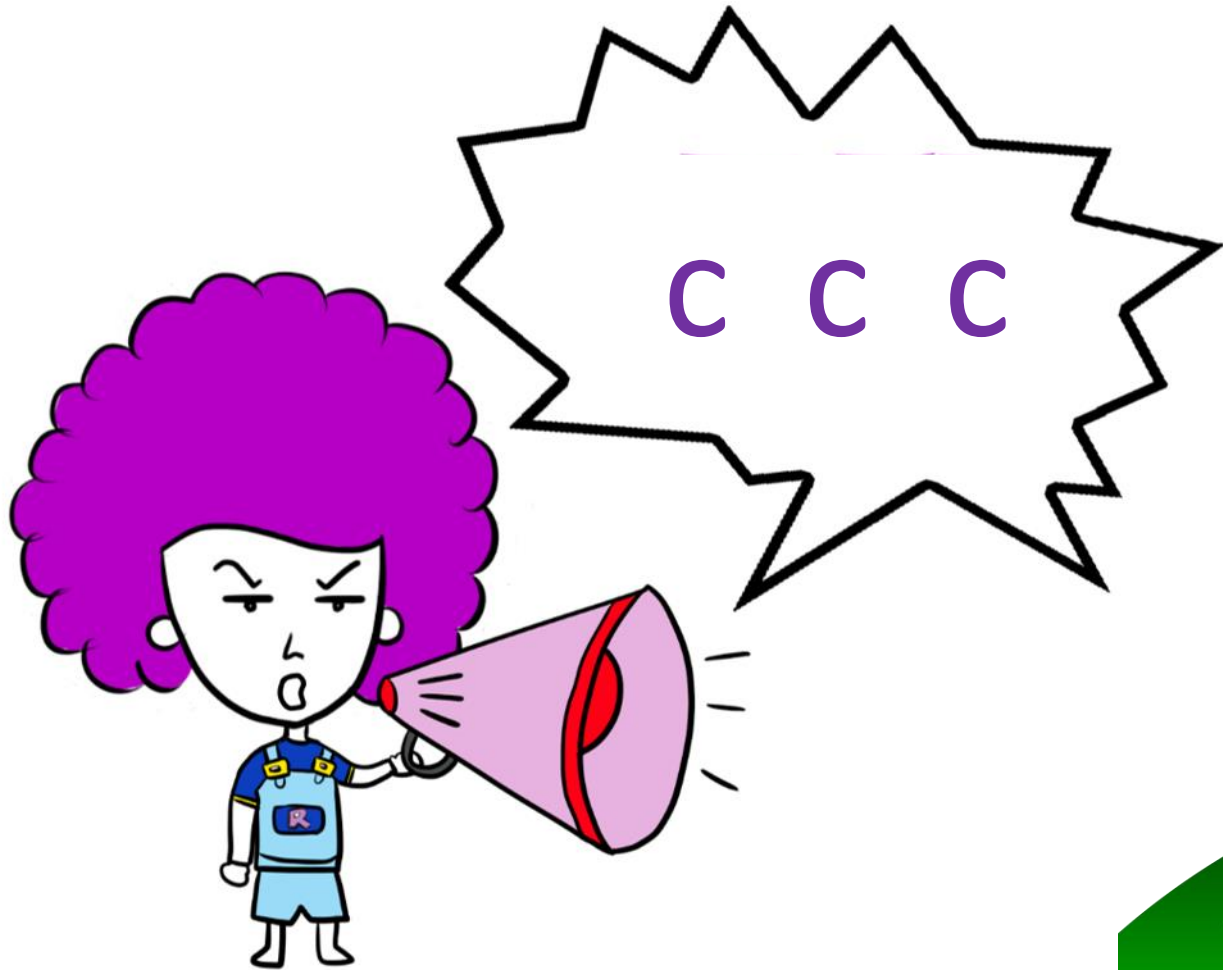


SS SS SS

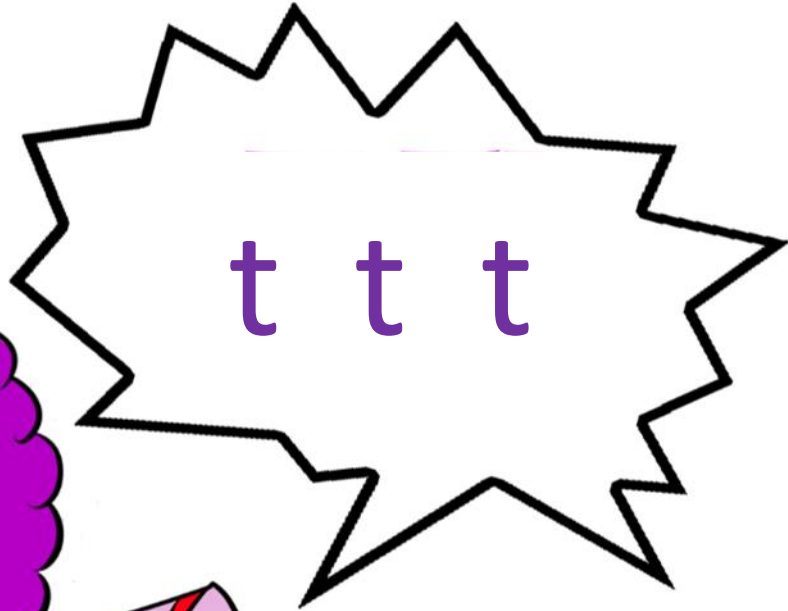
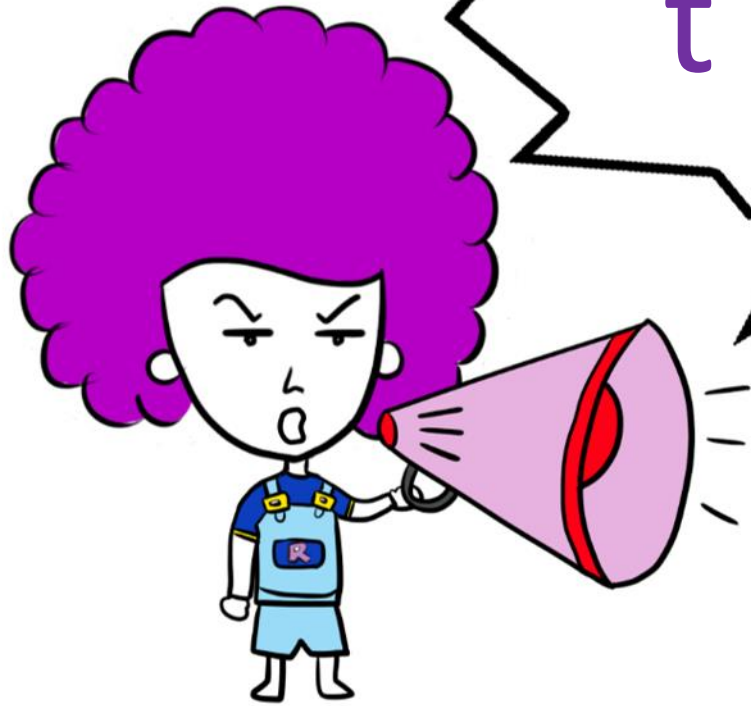


mess

circus

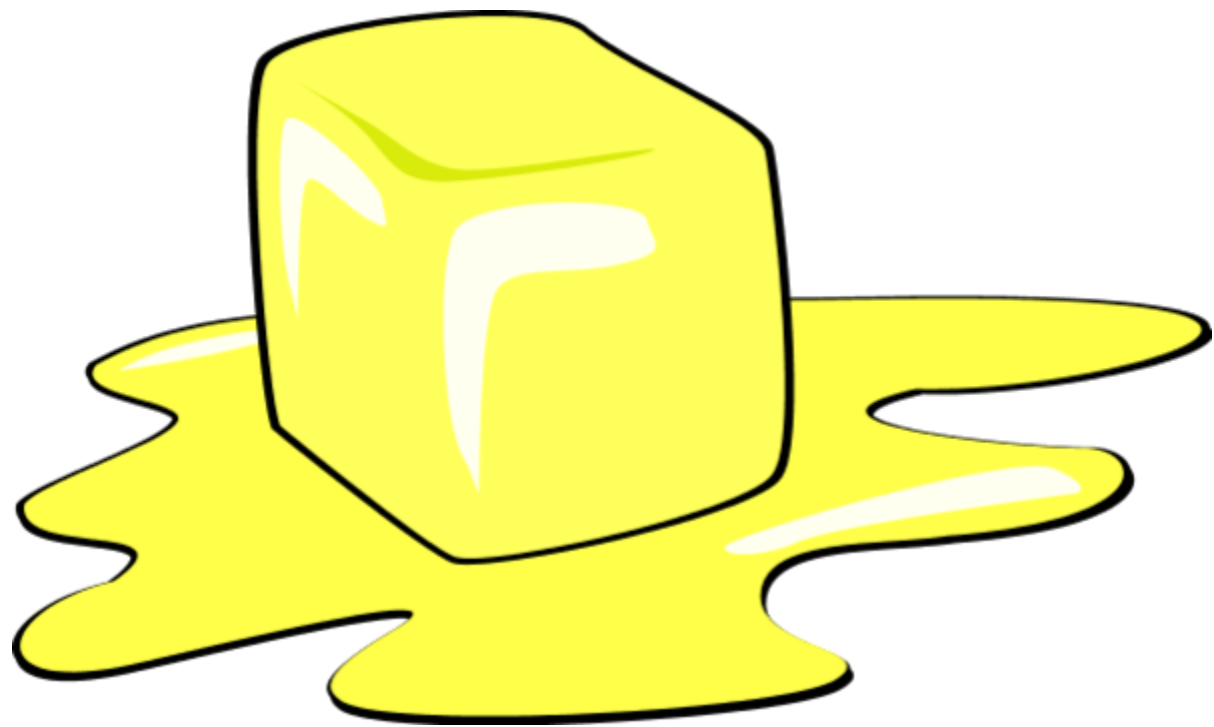
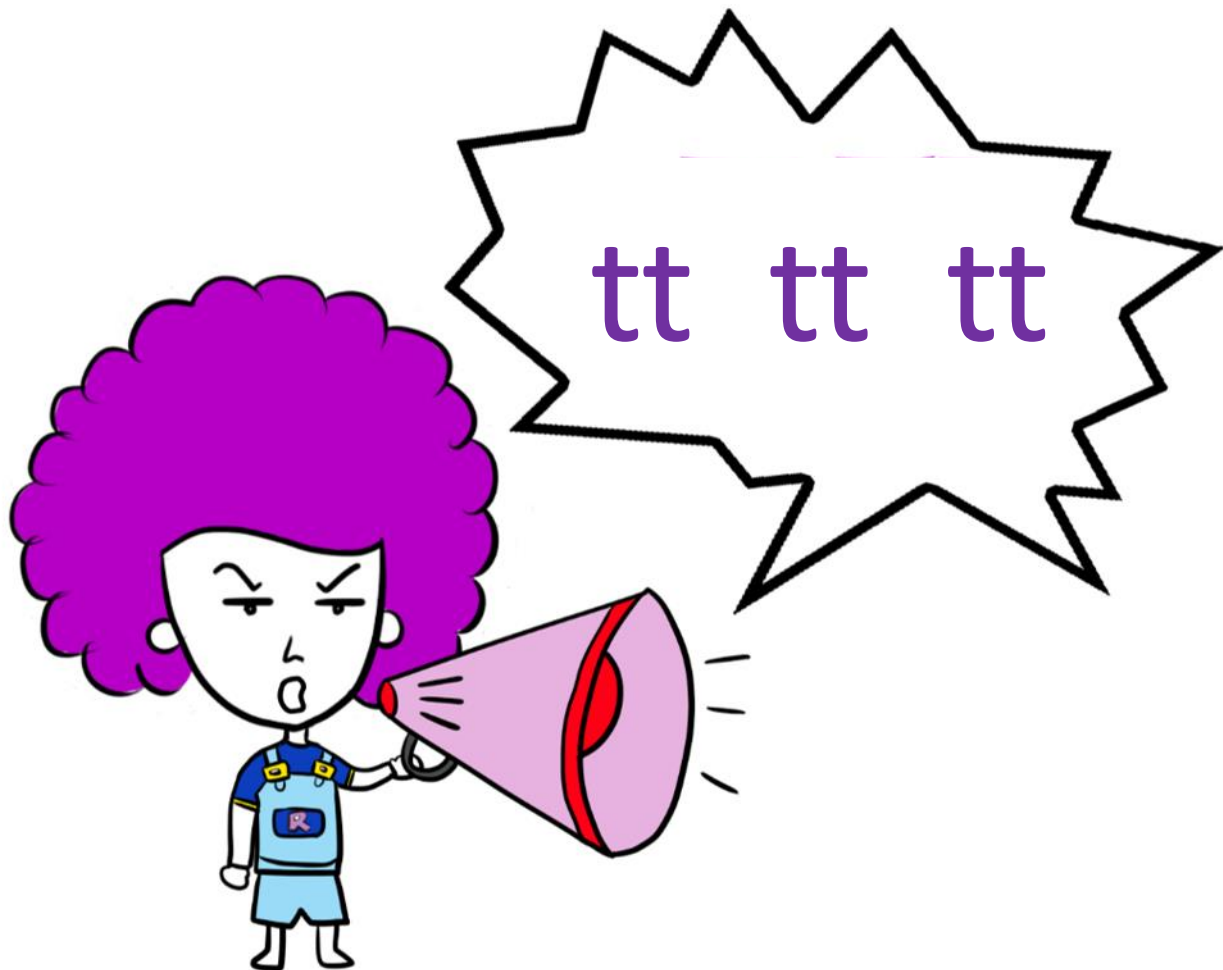


/t/



tap

butter



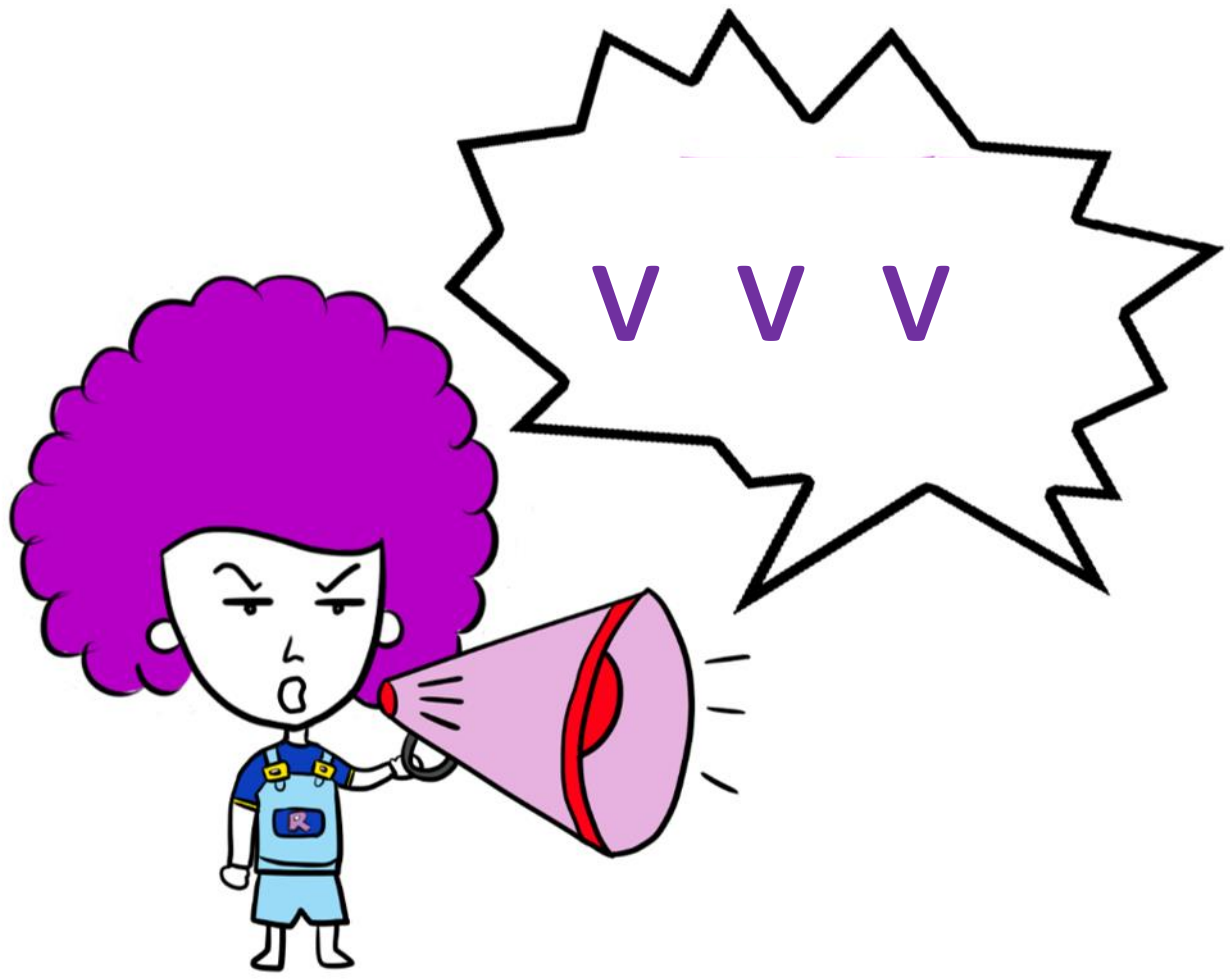


ed ed ed



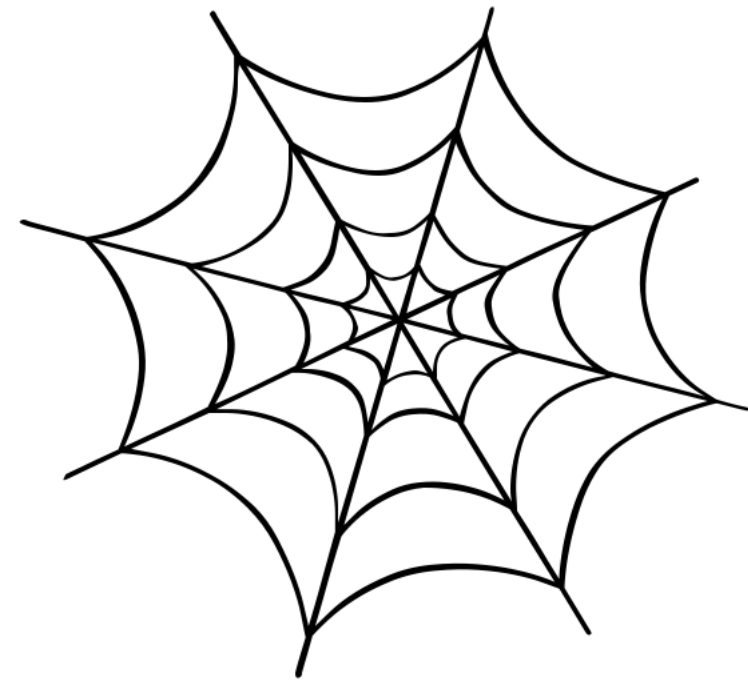
trapped

WV



van

WwW



w e b

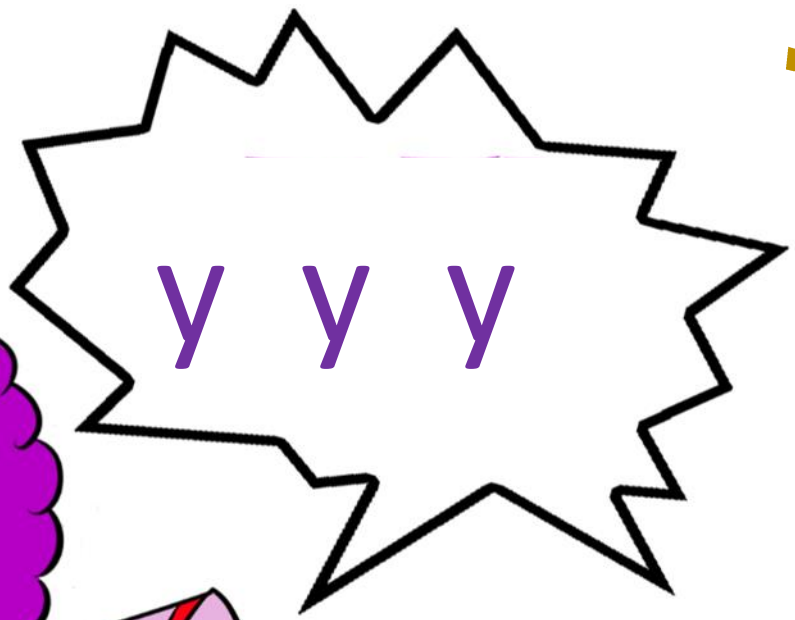
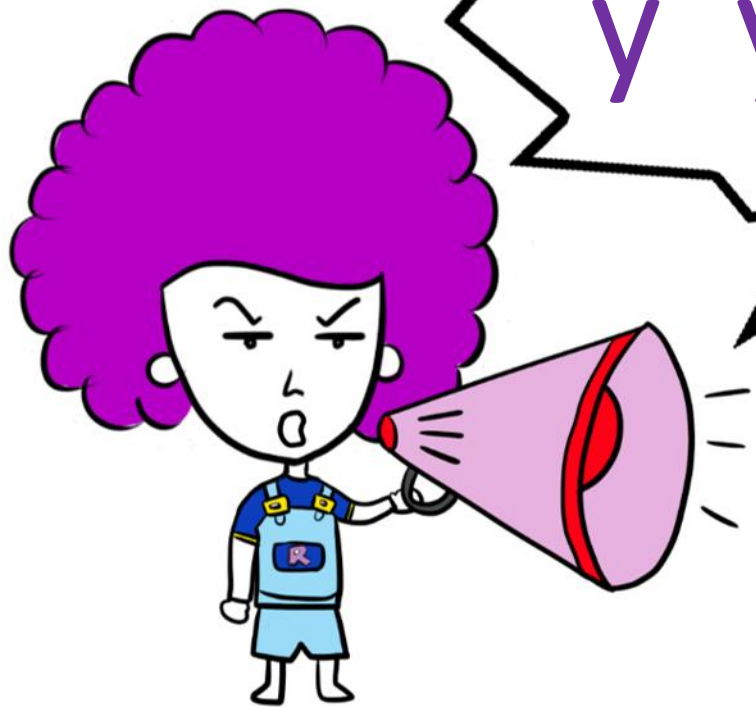


wh wh wh



why

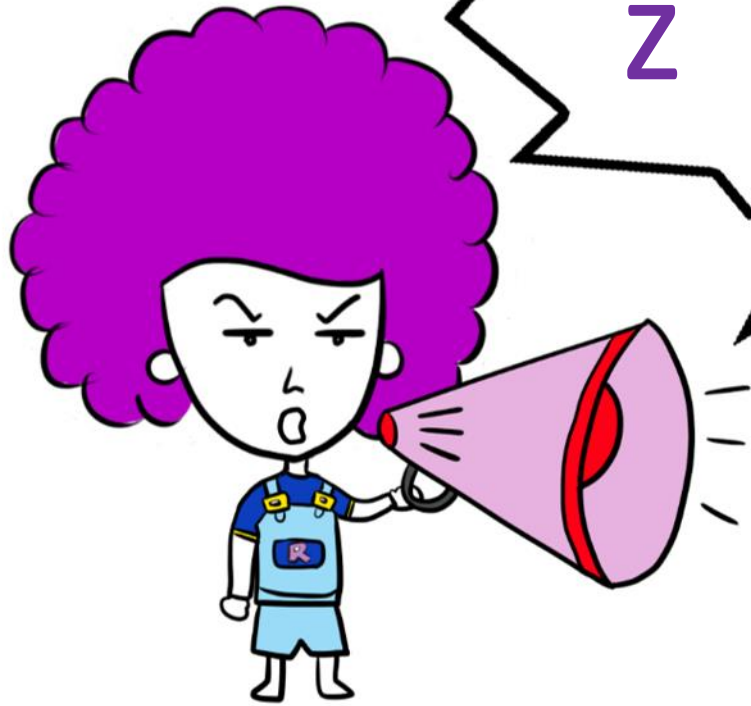
lyl



y es

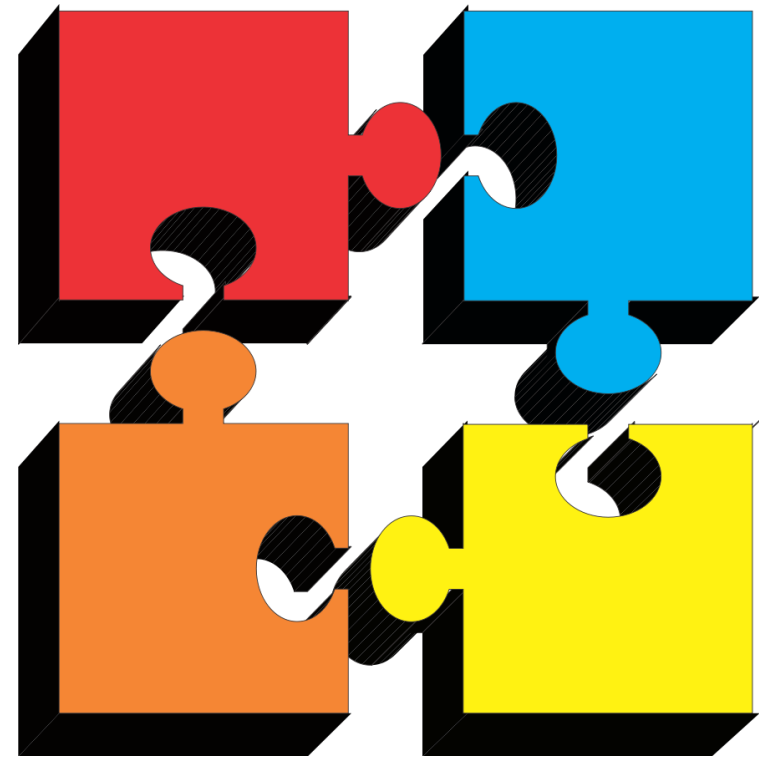


/z/



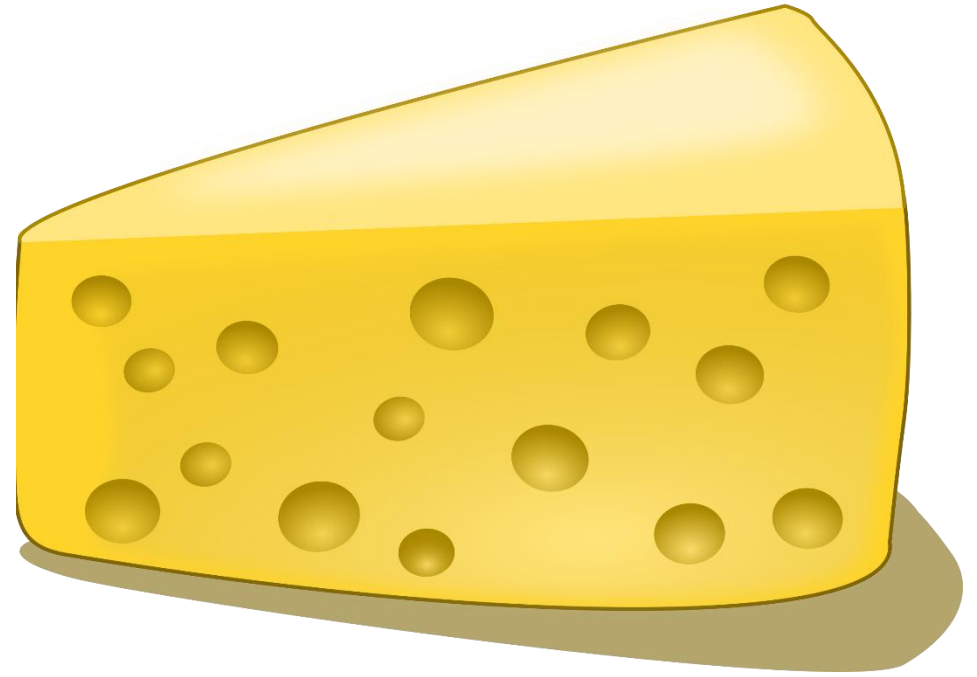
zebra

puzzle





se se se



cheese