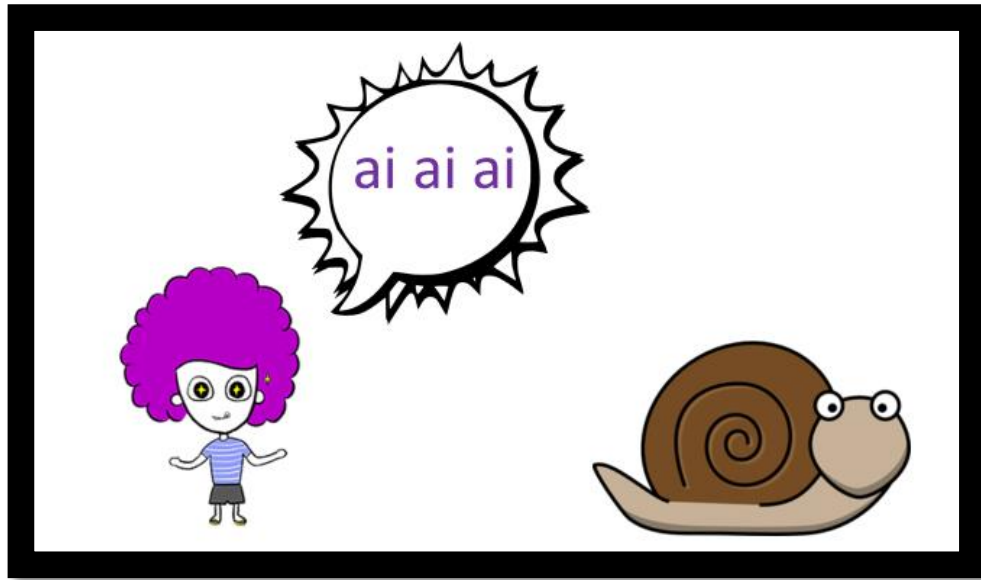


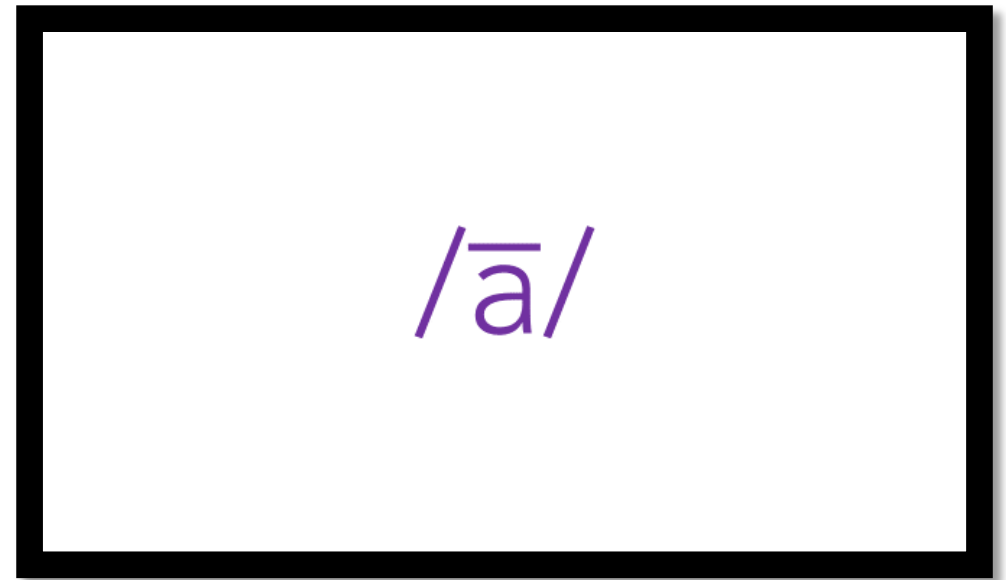
Long Vowels
Printable
Flashcards



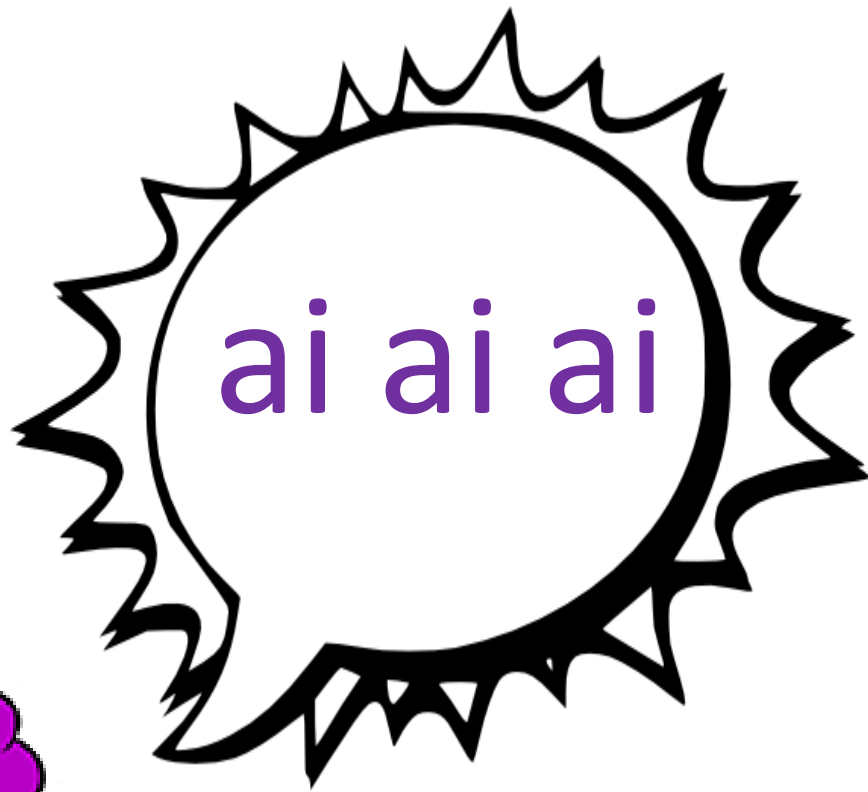
Can you match the picture flashcards to the sound cards...?



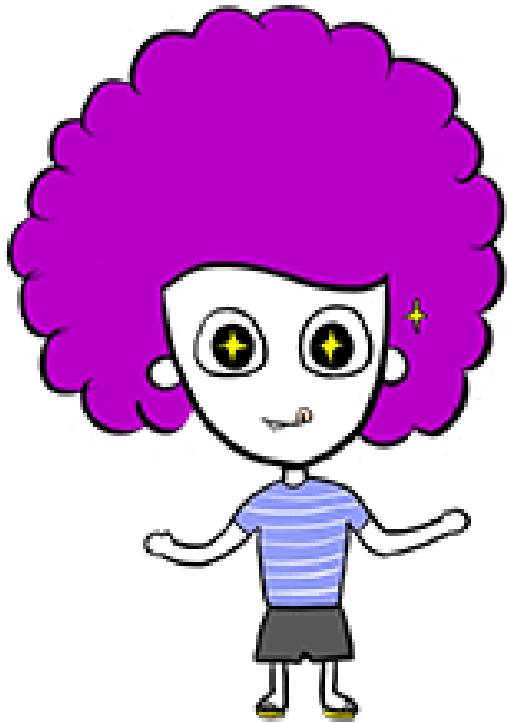
=

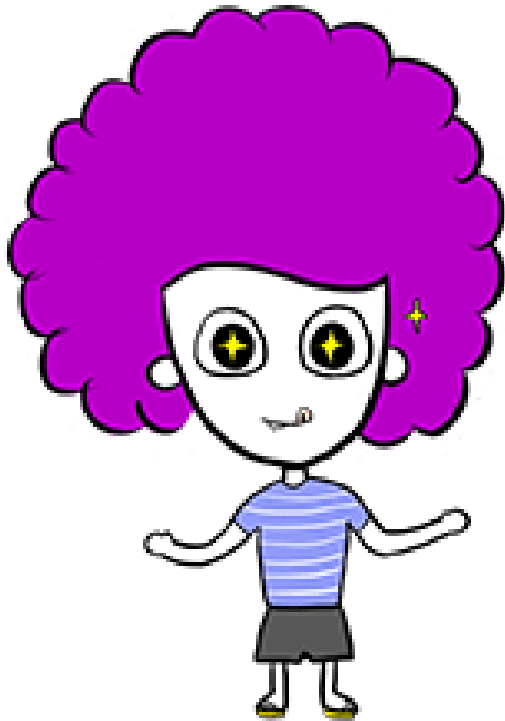
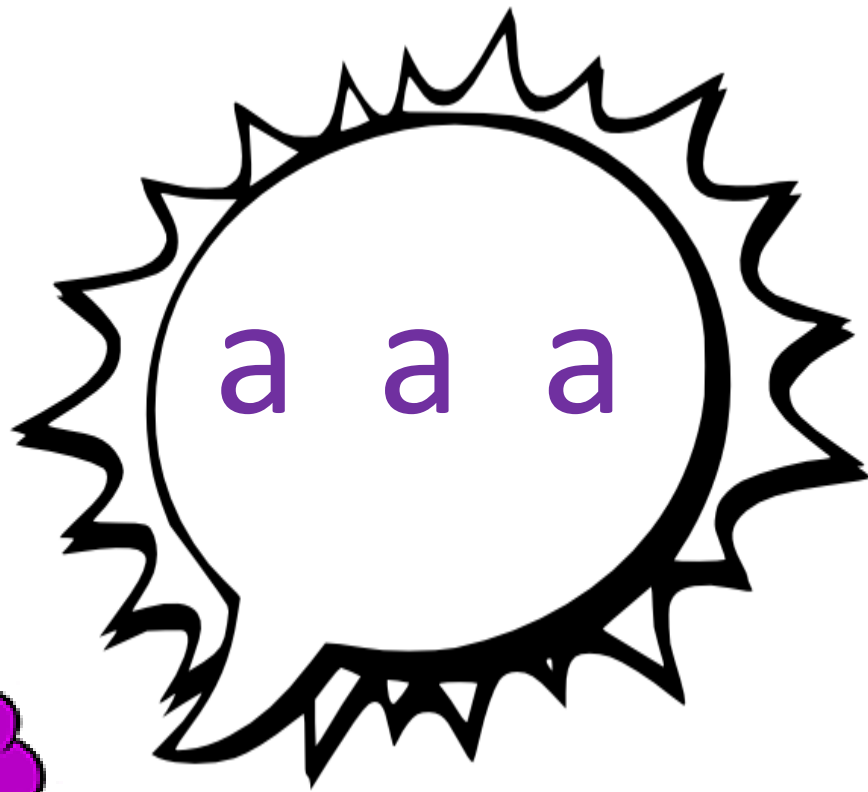


/ā/



snail

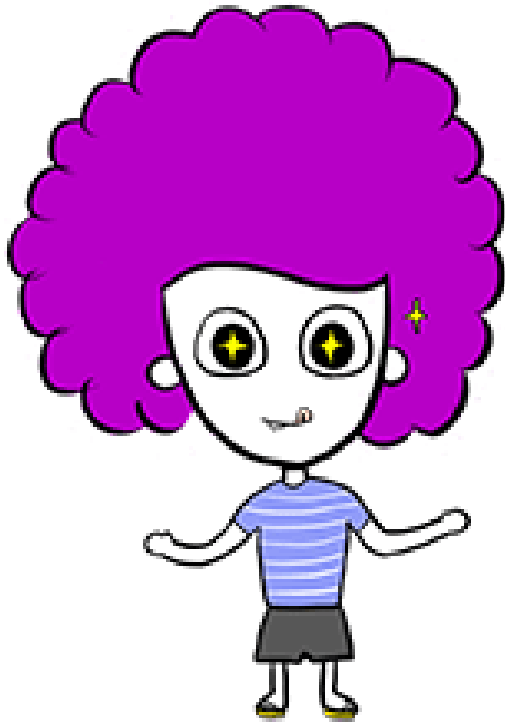


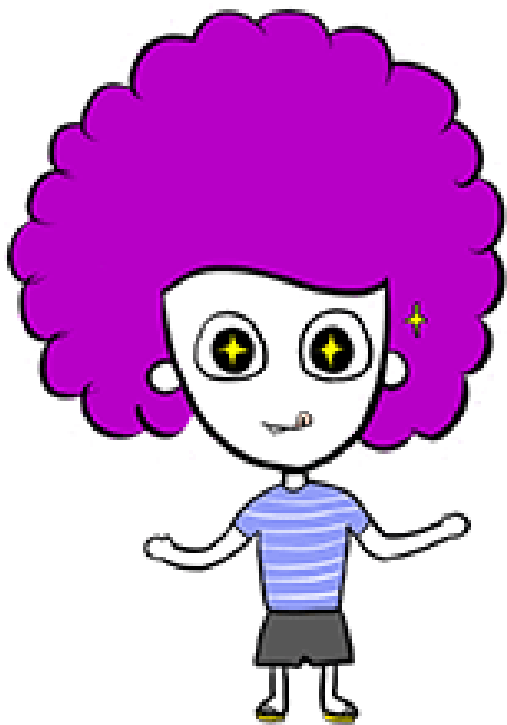
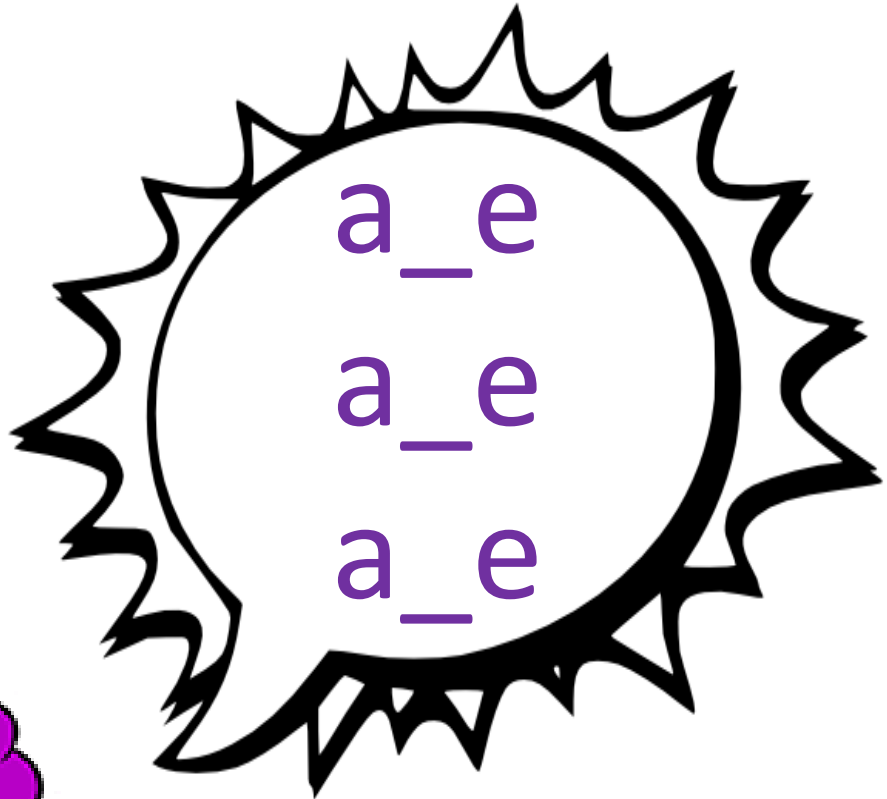


b a b y

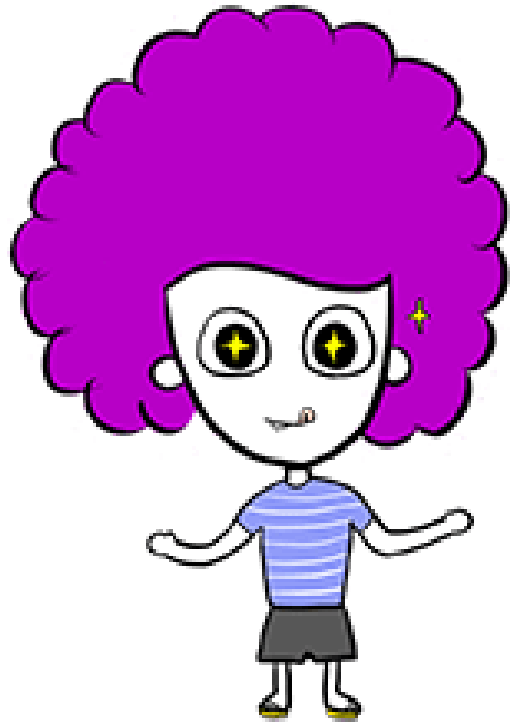


h ay

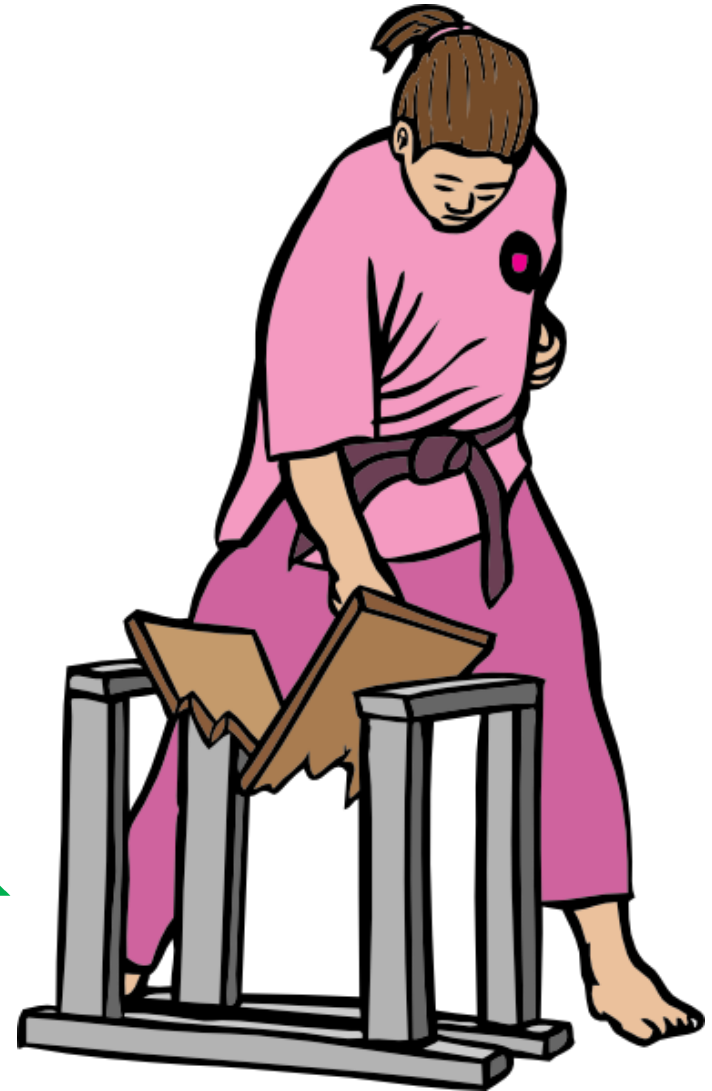


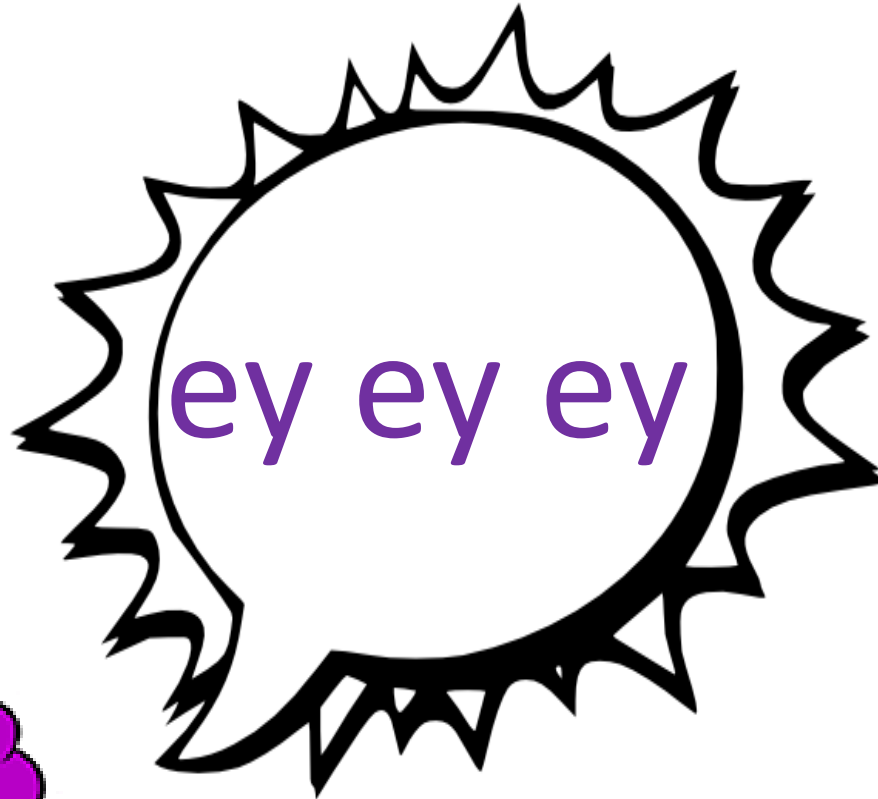


cake

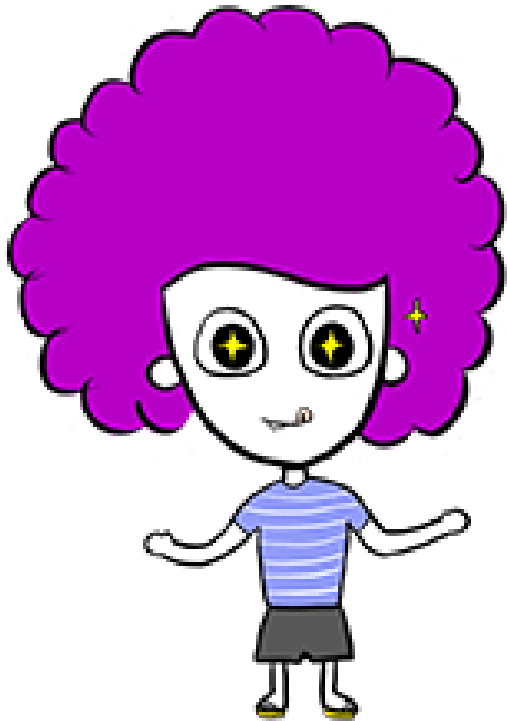


break





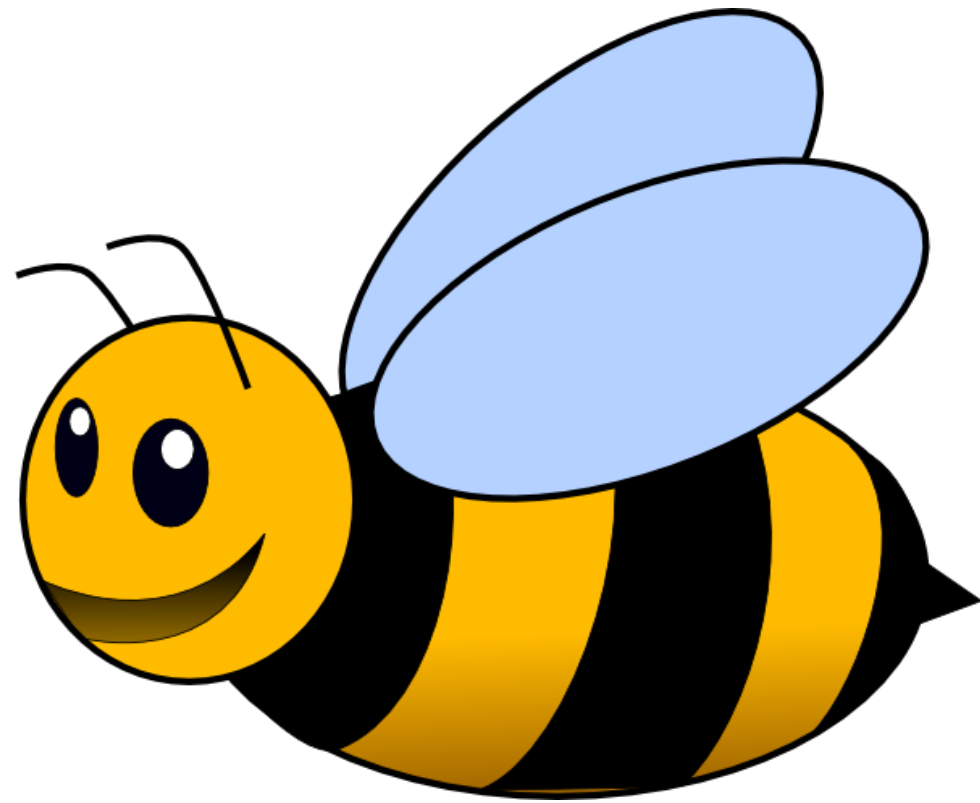
they



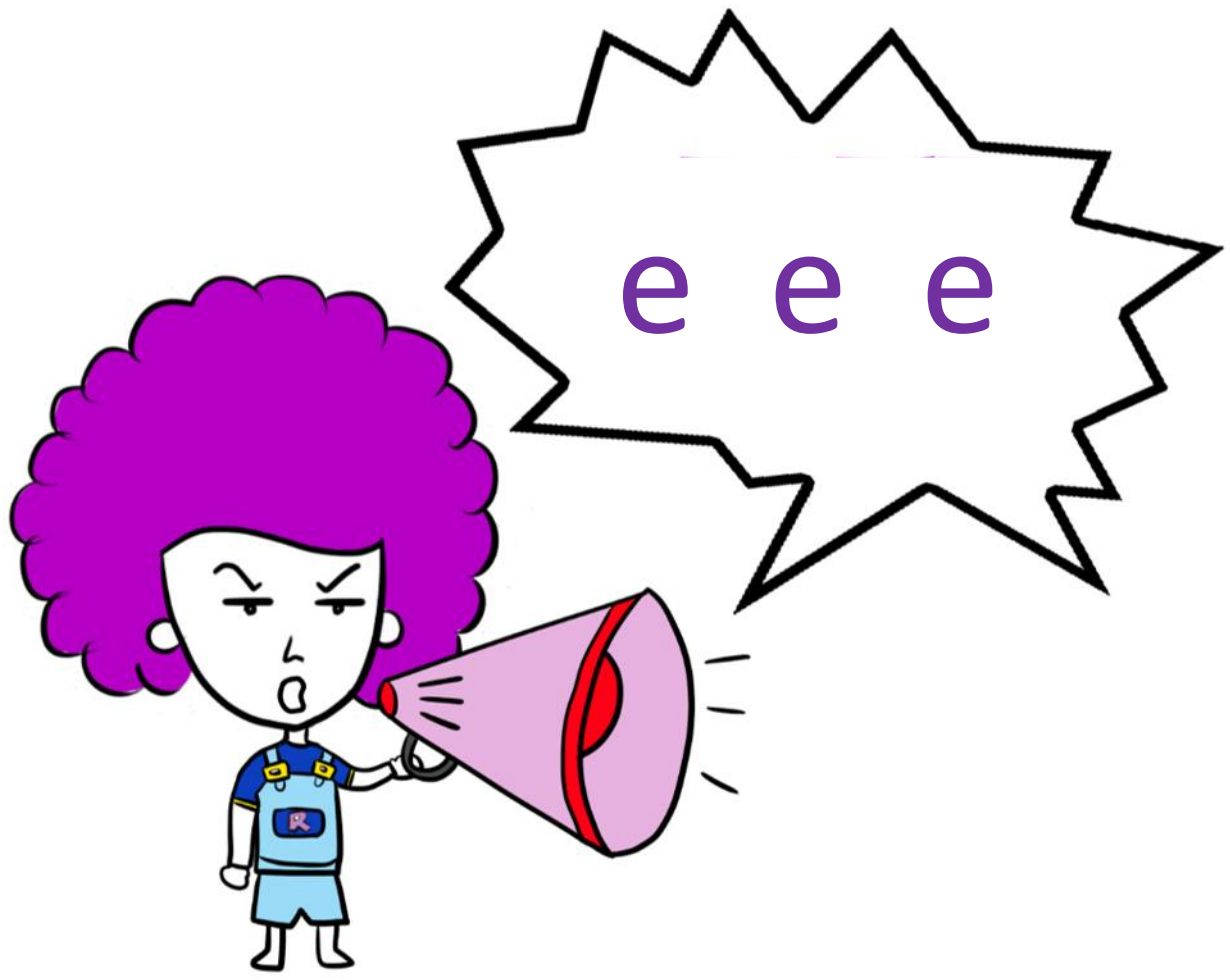
/ē/



ee ee ee



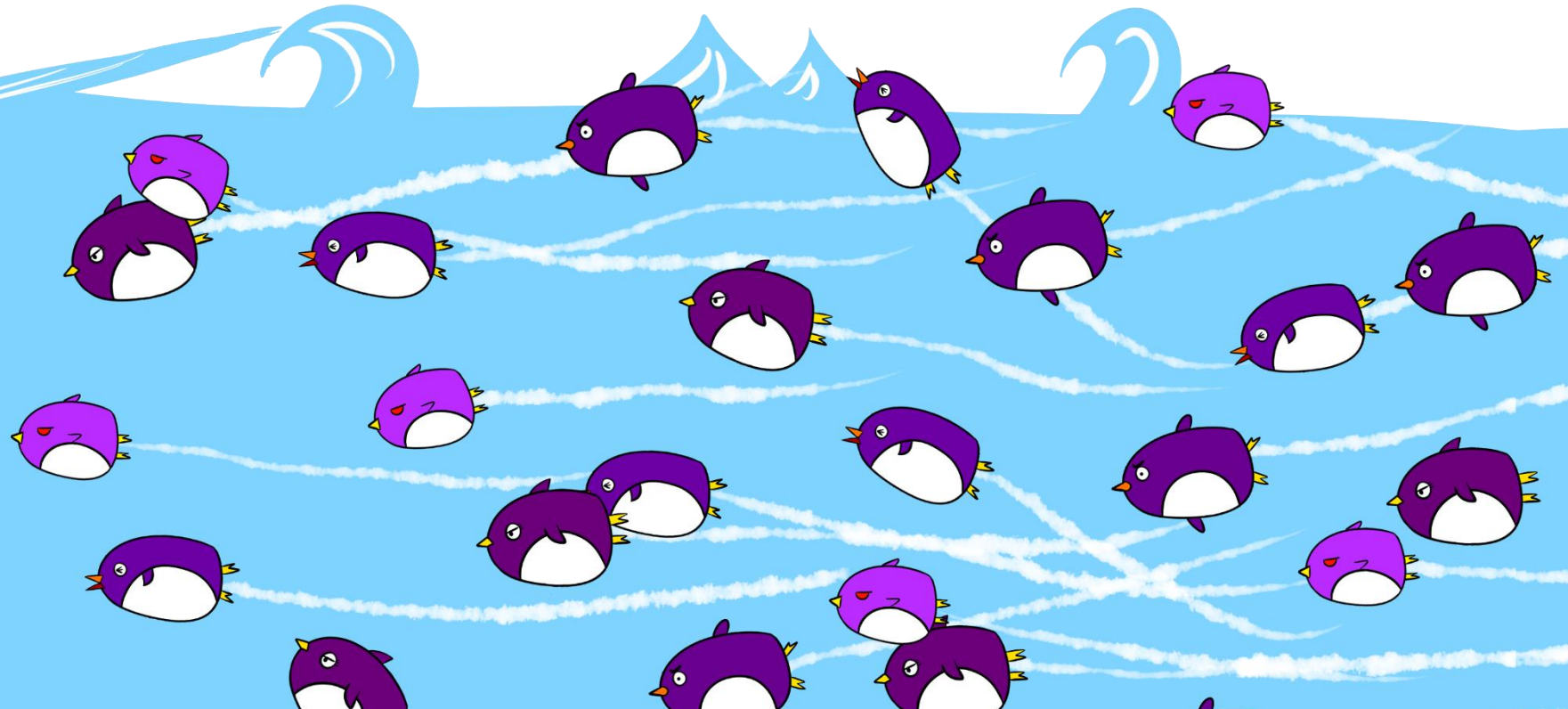
b ee e

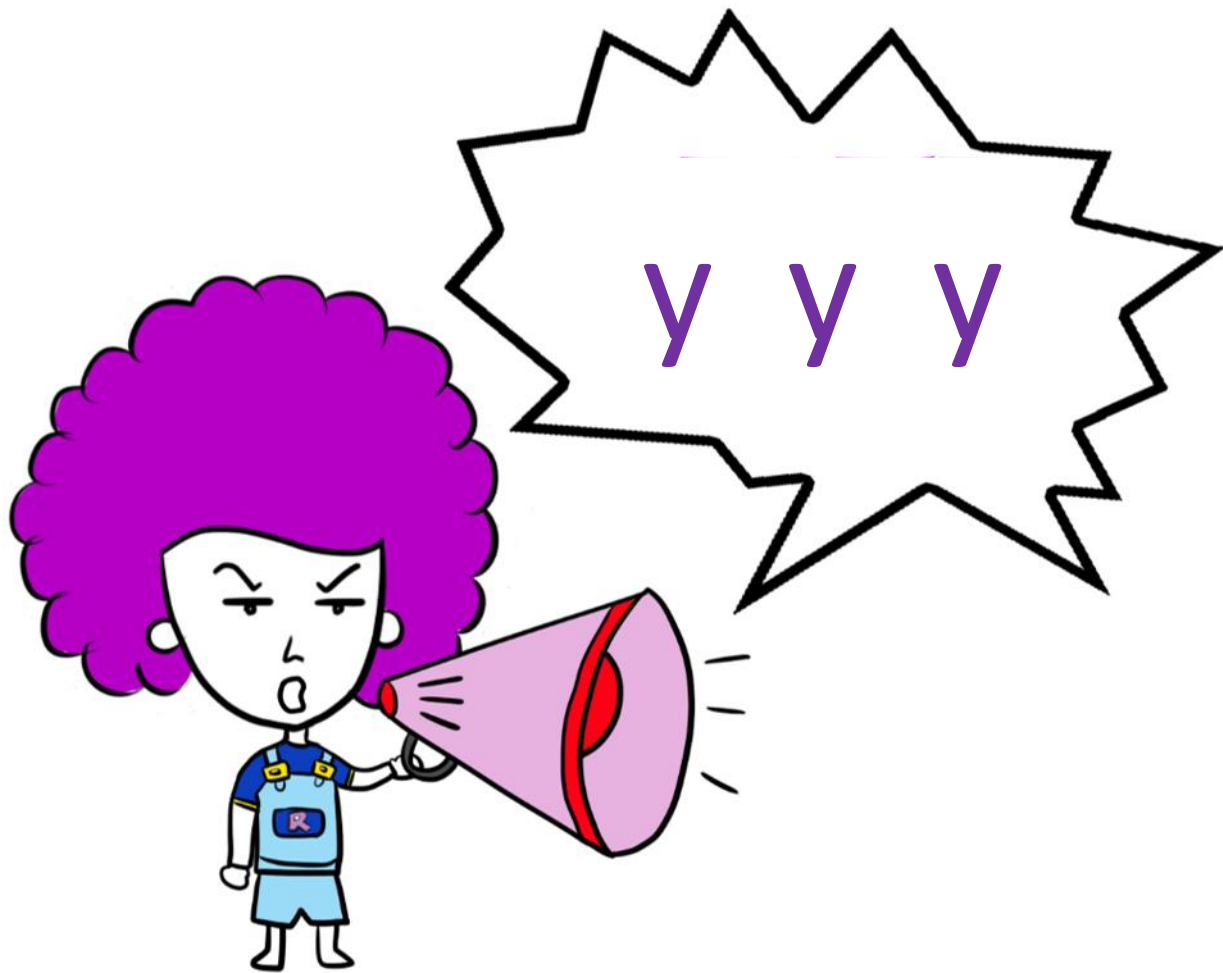


me



sea



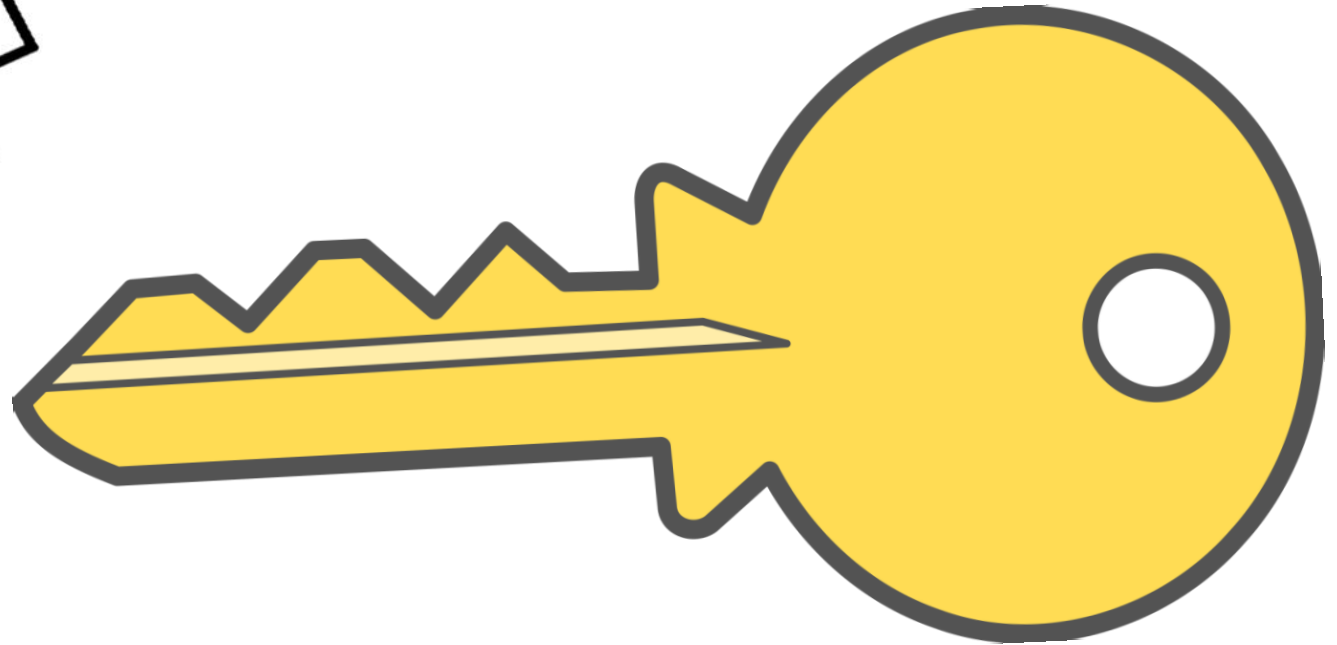


baby

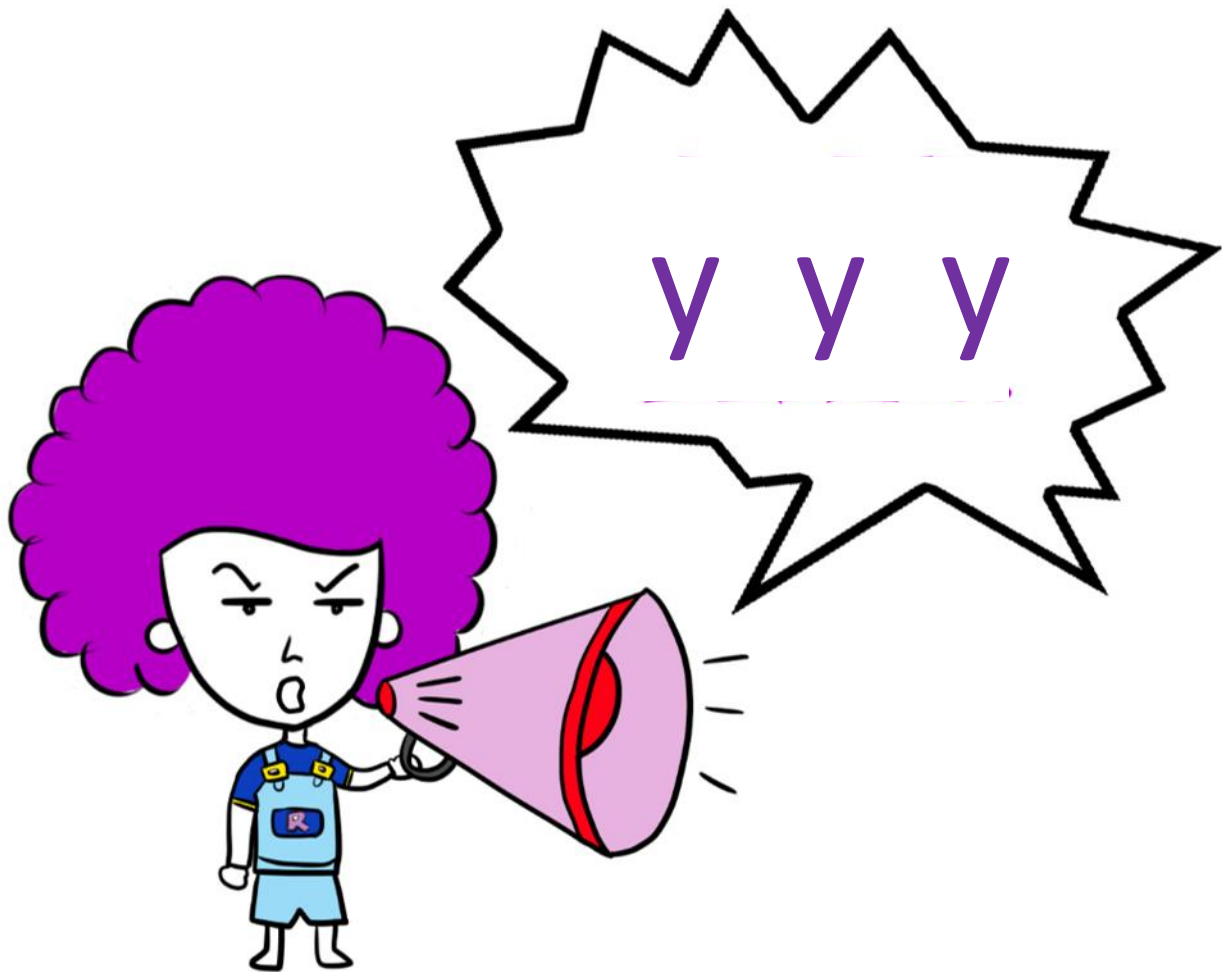




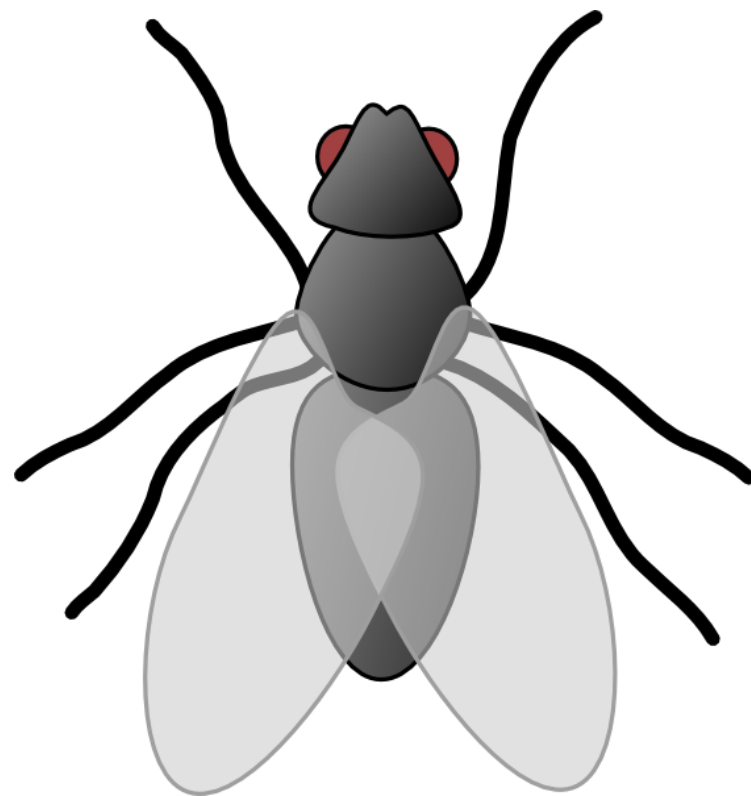
key



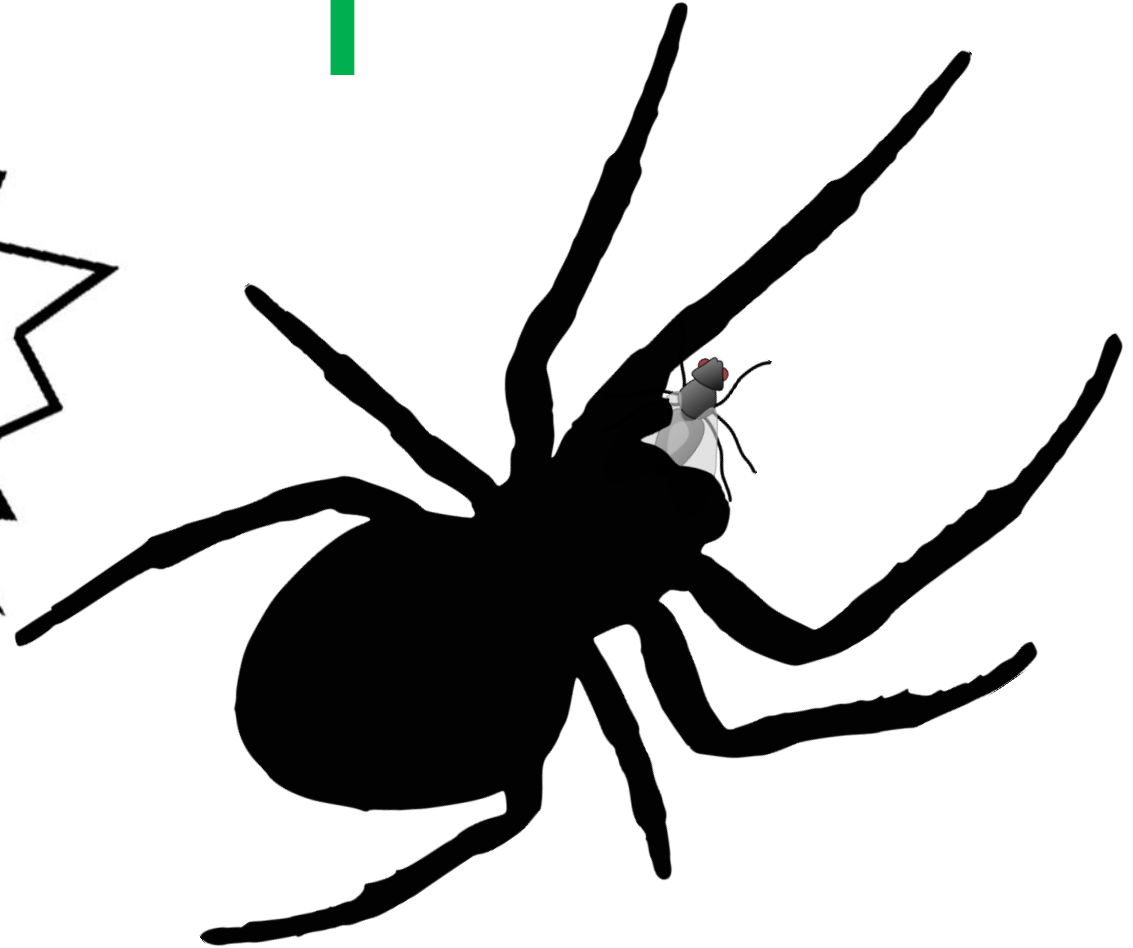
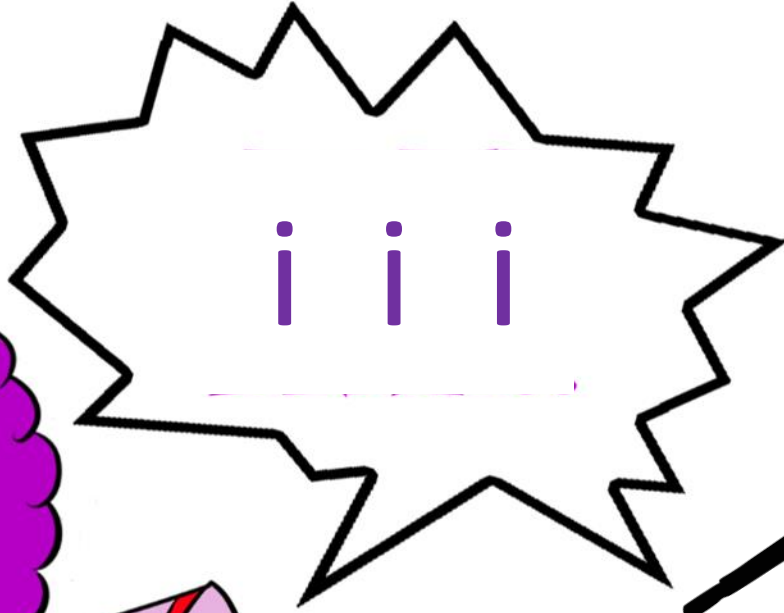
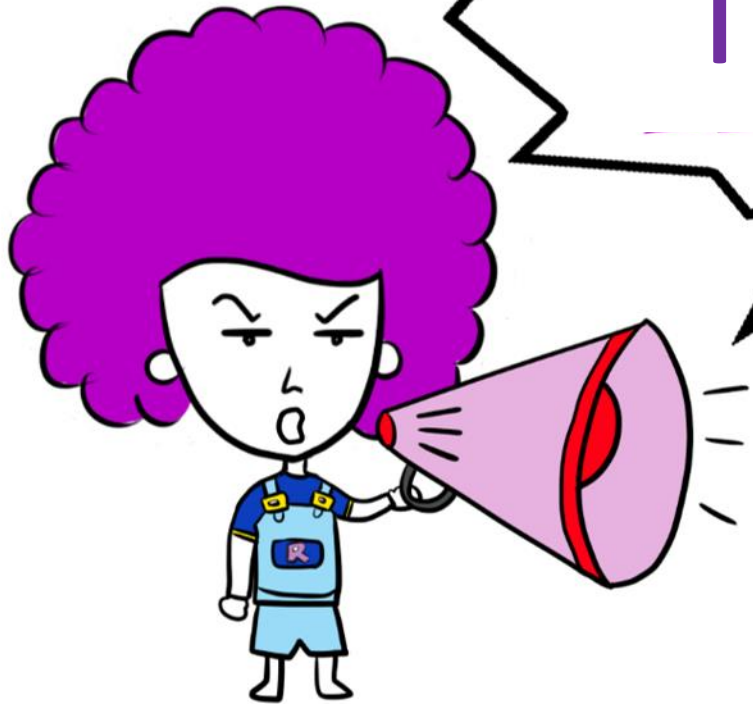
ITV



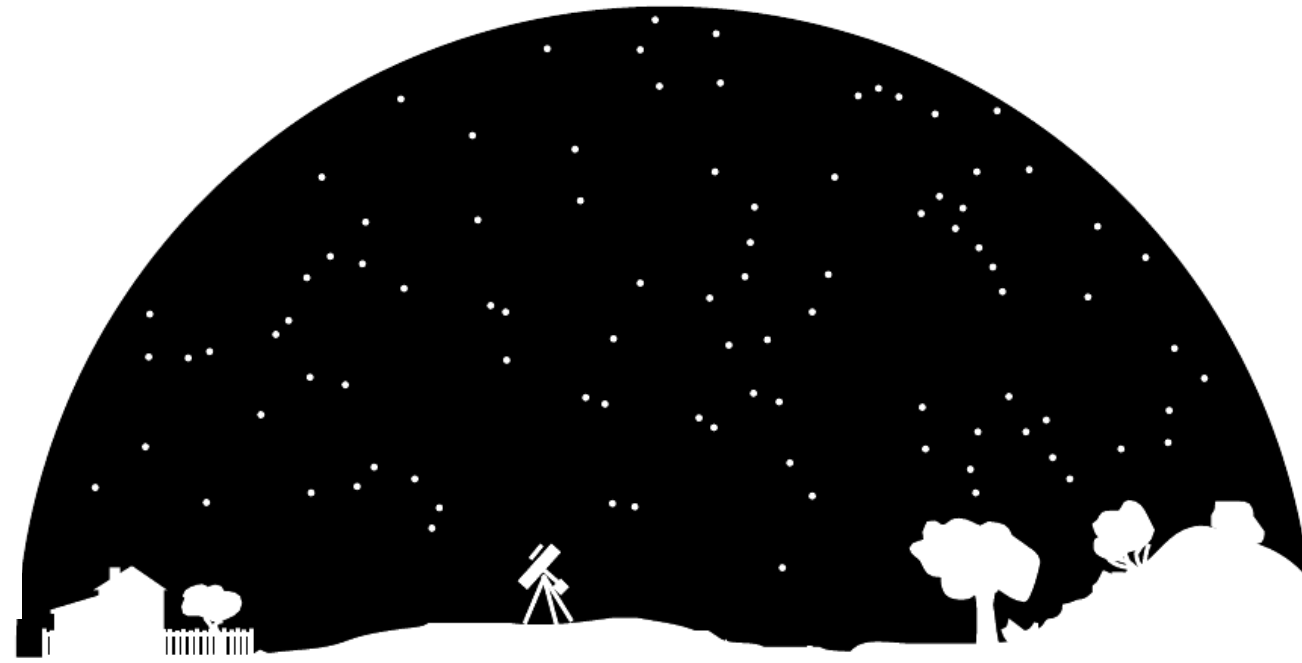
fly

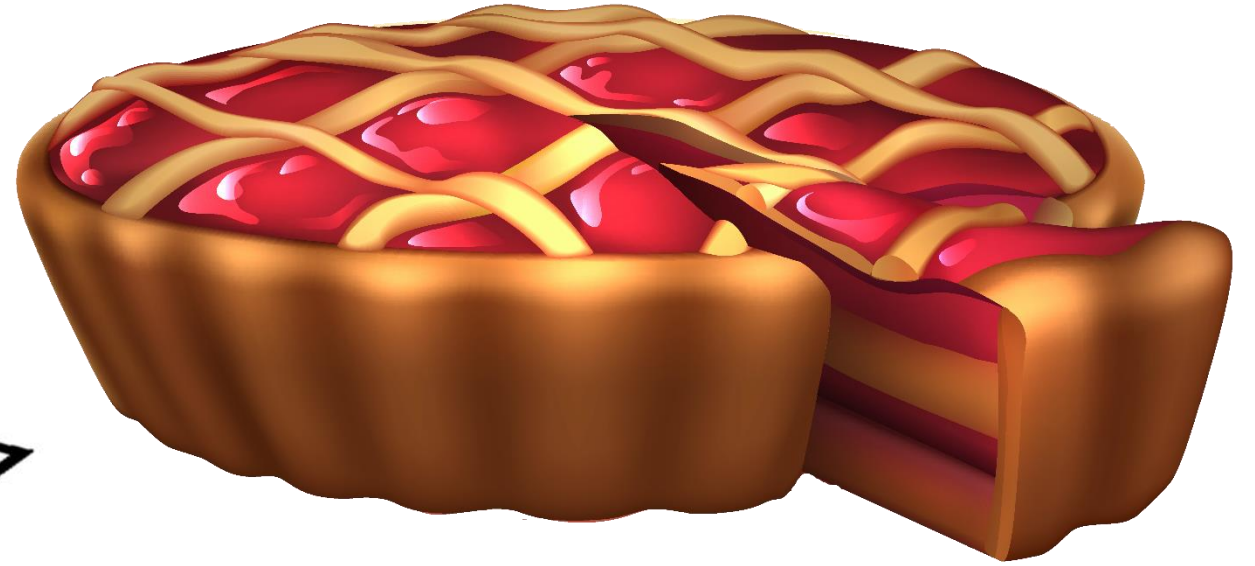
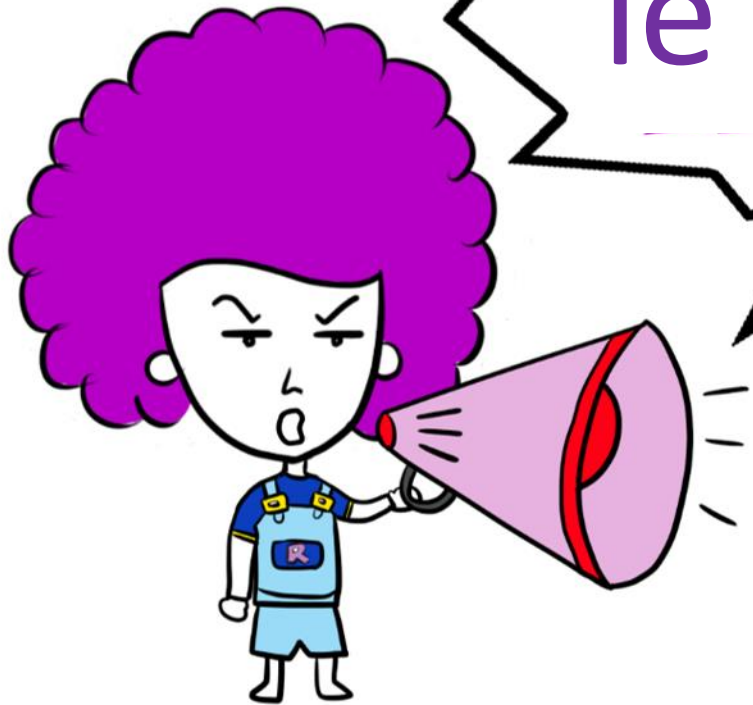


spider



night





pie



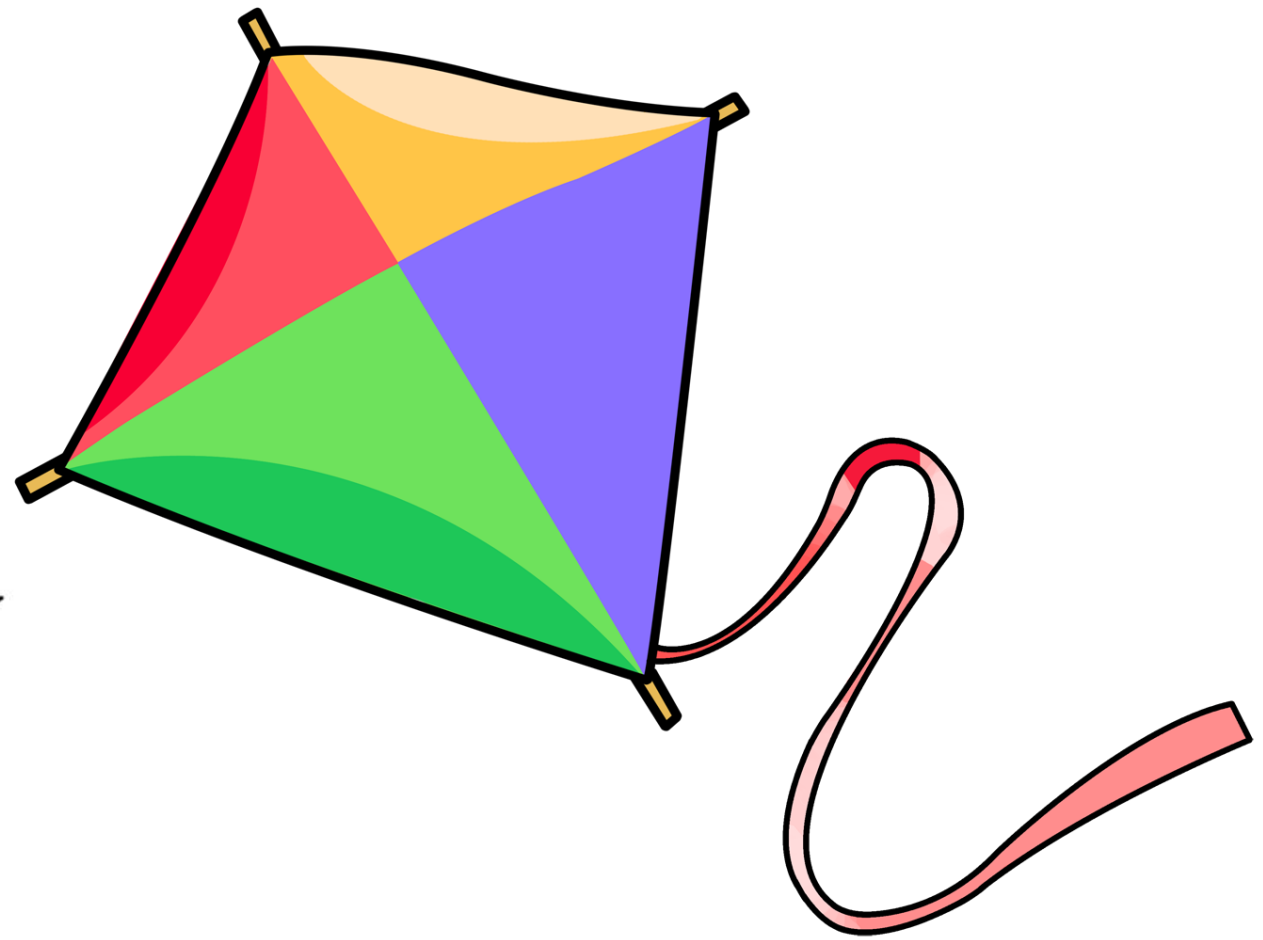
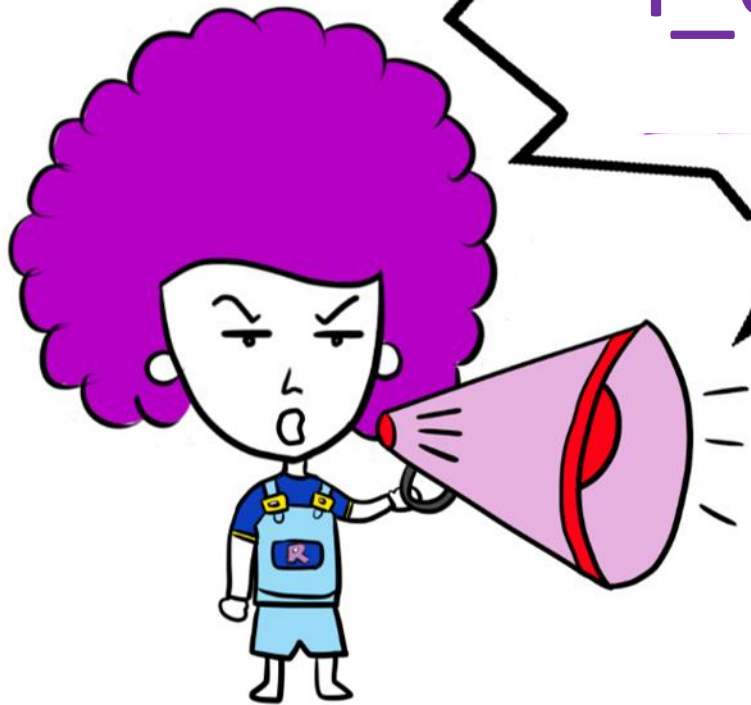
buy





bye





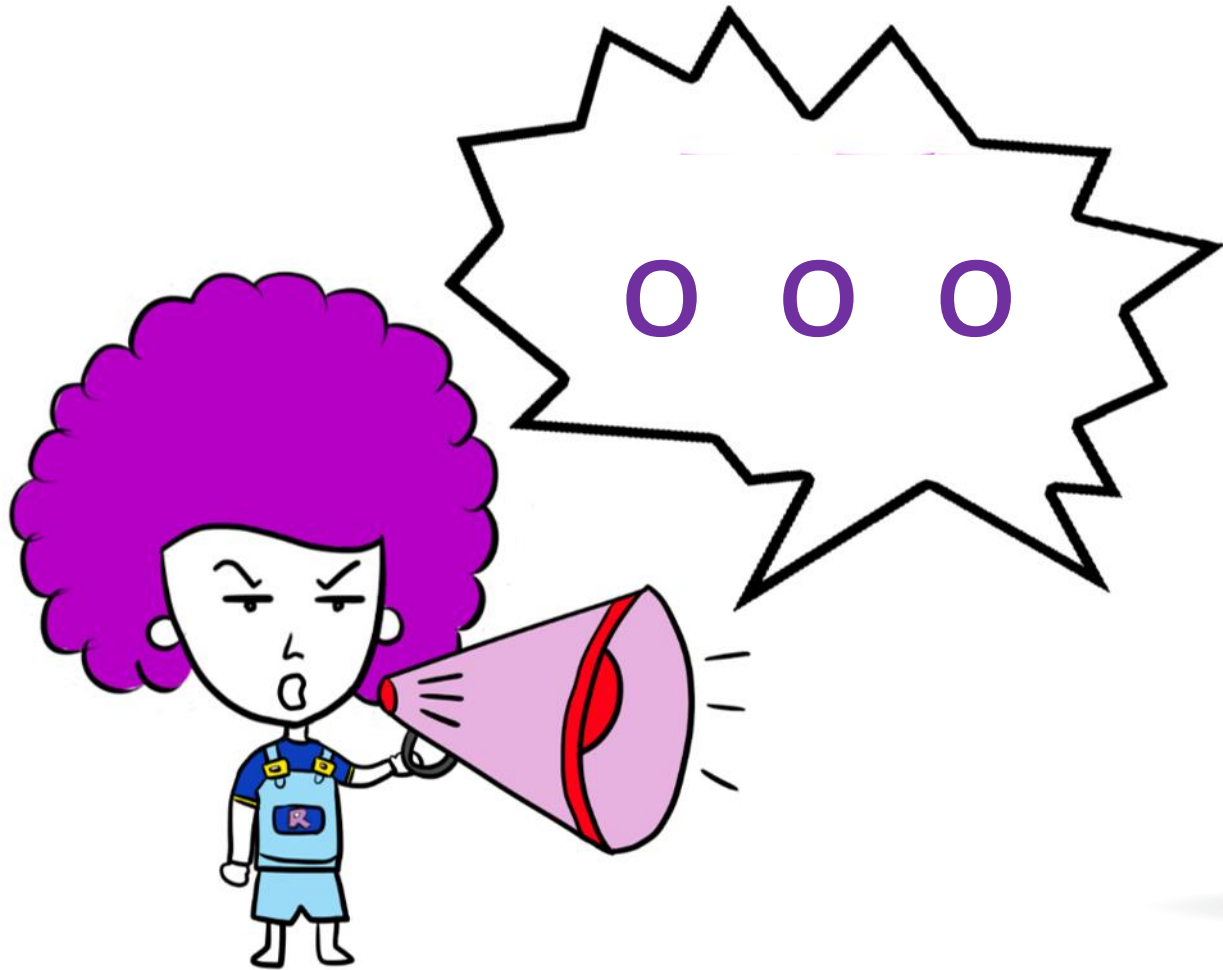
kite

/ō/

boat

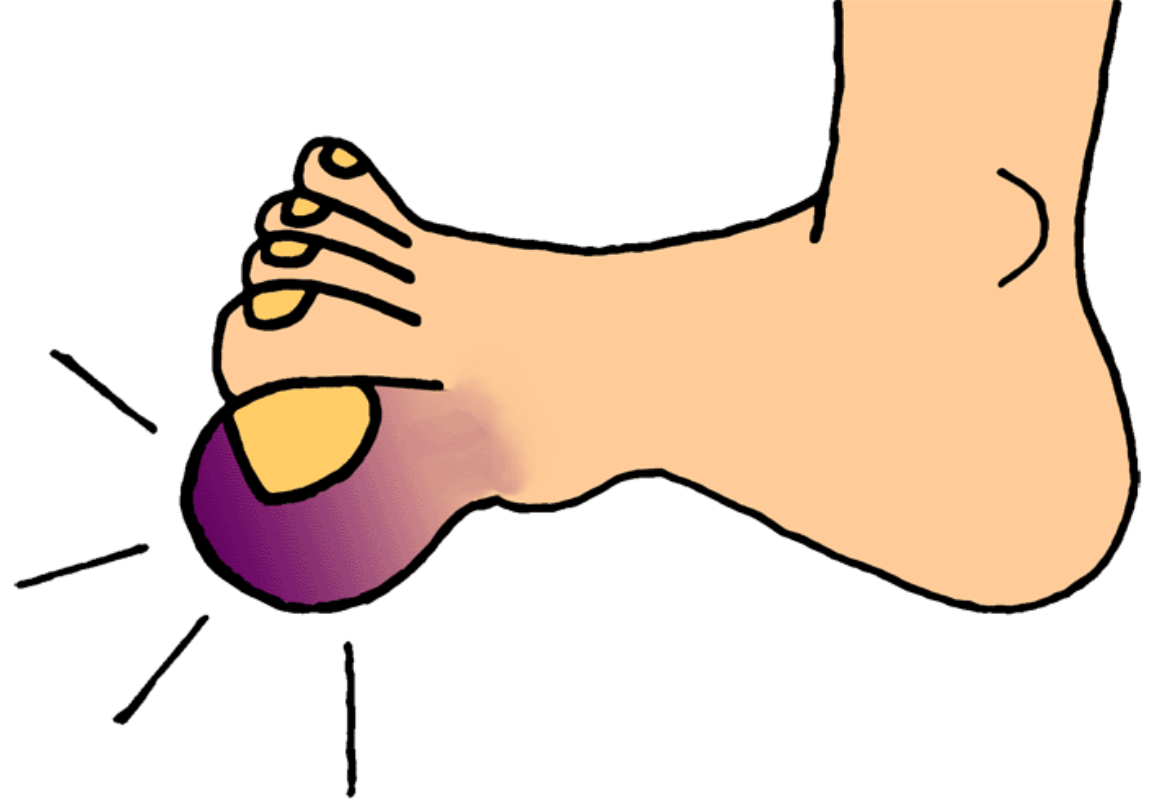


open





oe oe oe



toe

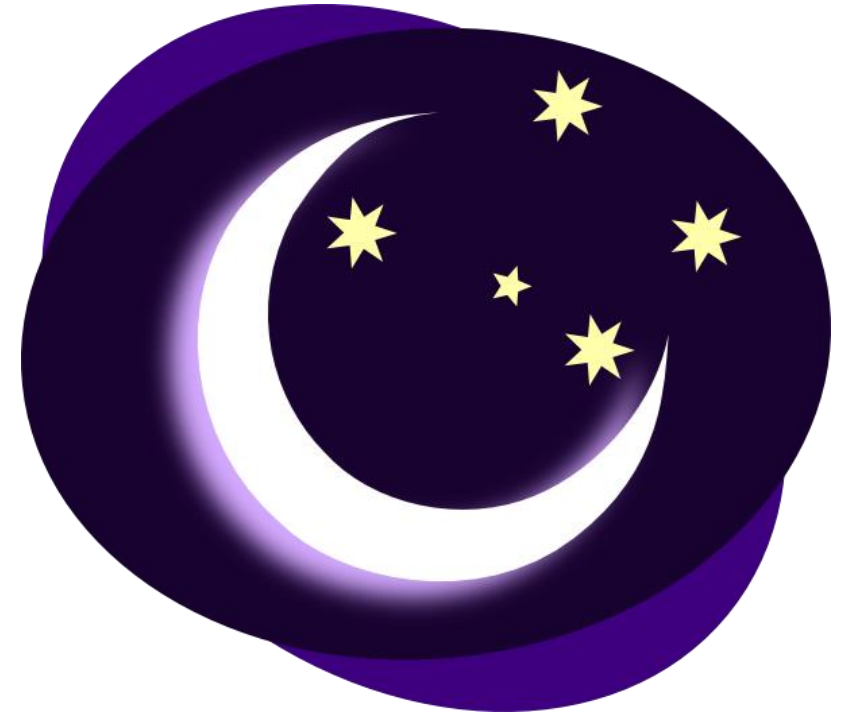
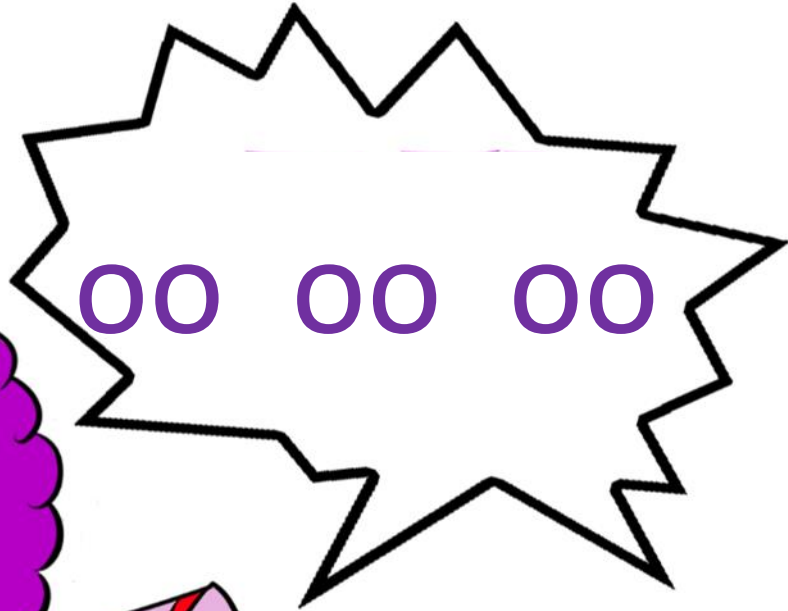
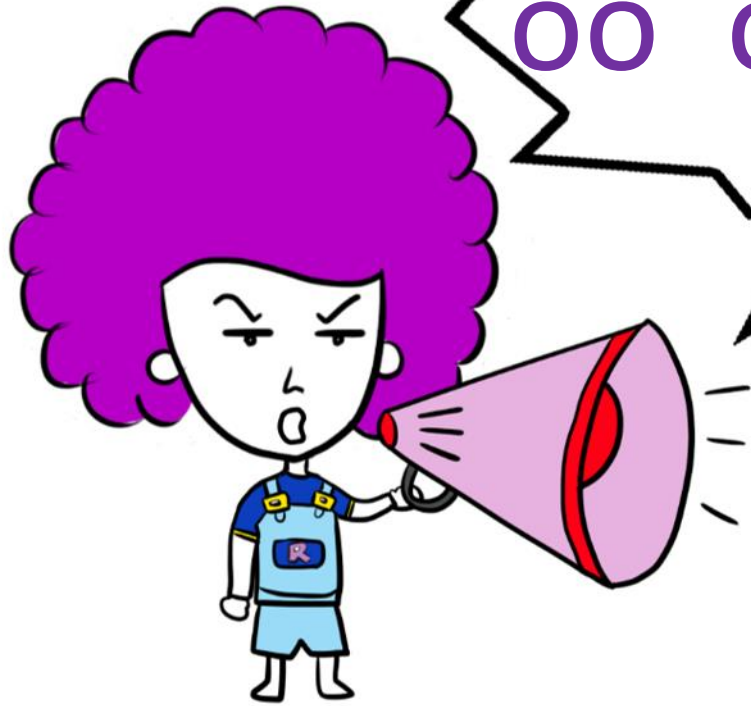


OW OW OW

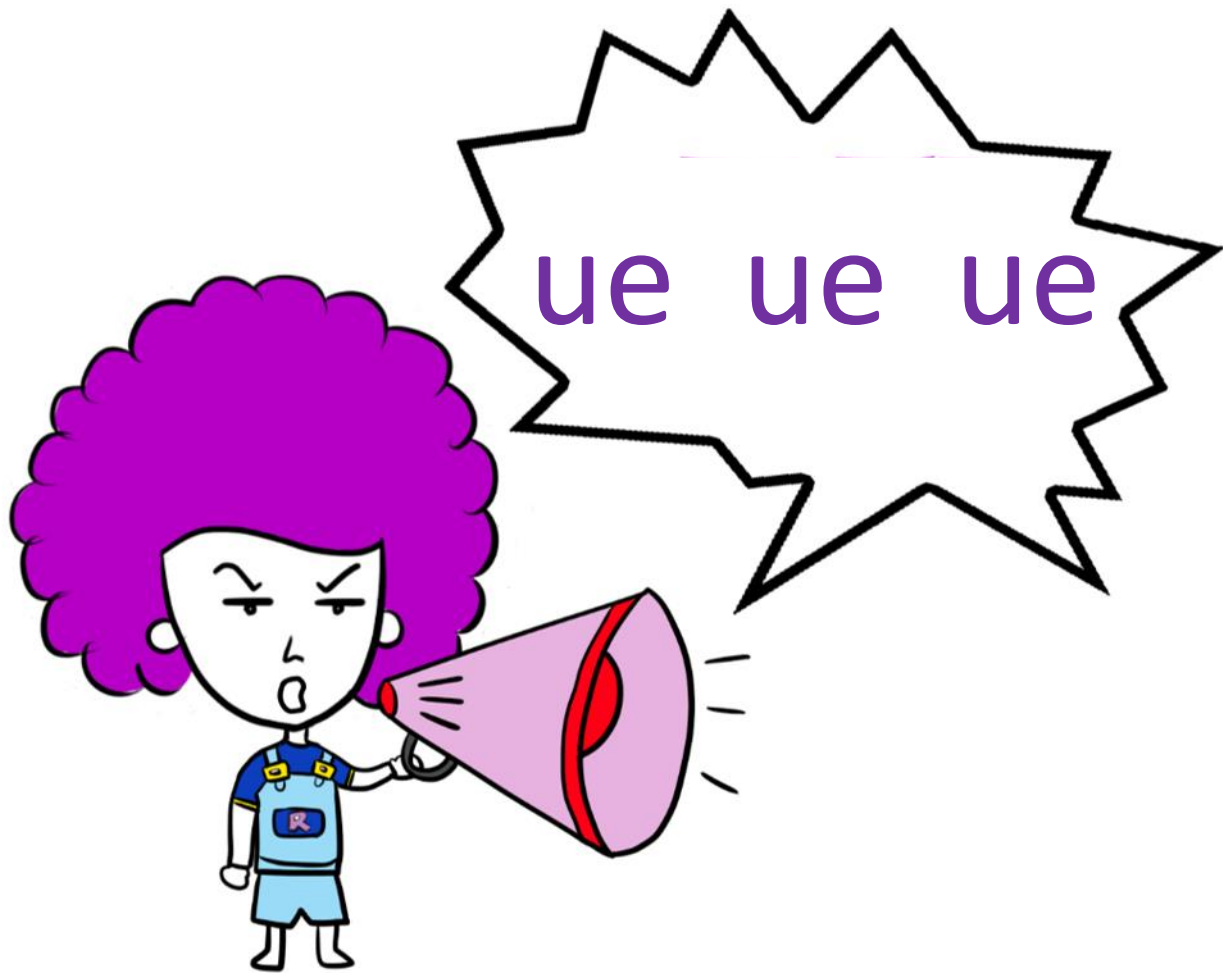


low

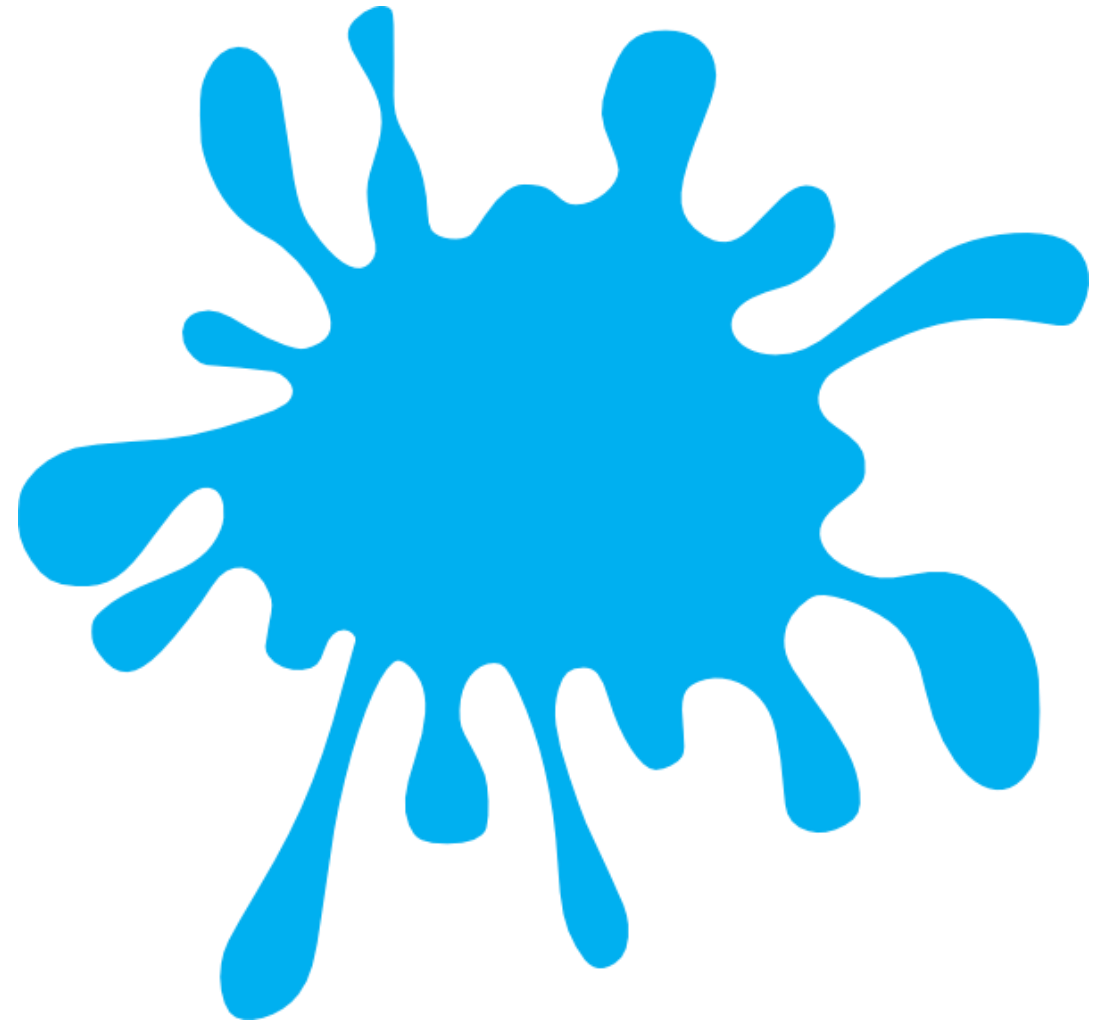
/ü/



moon



blue

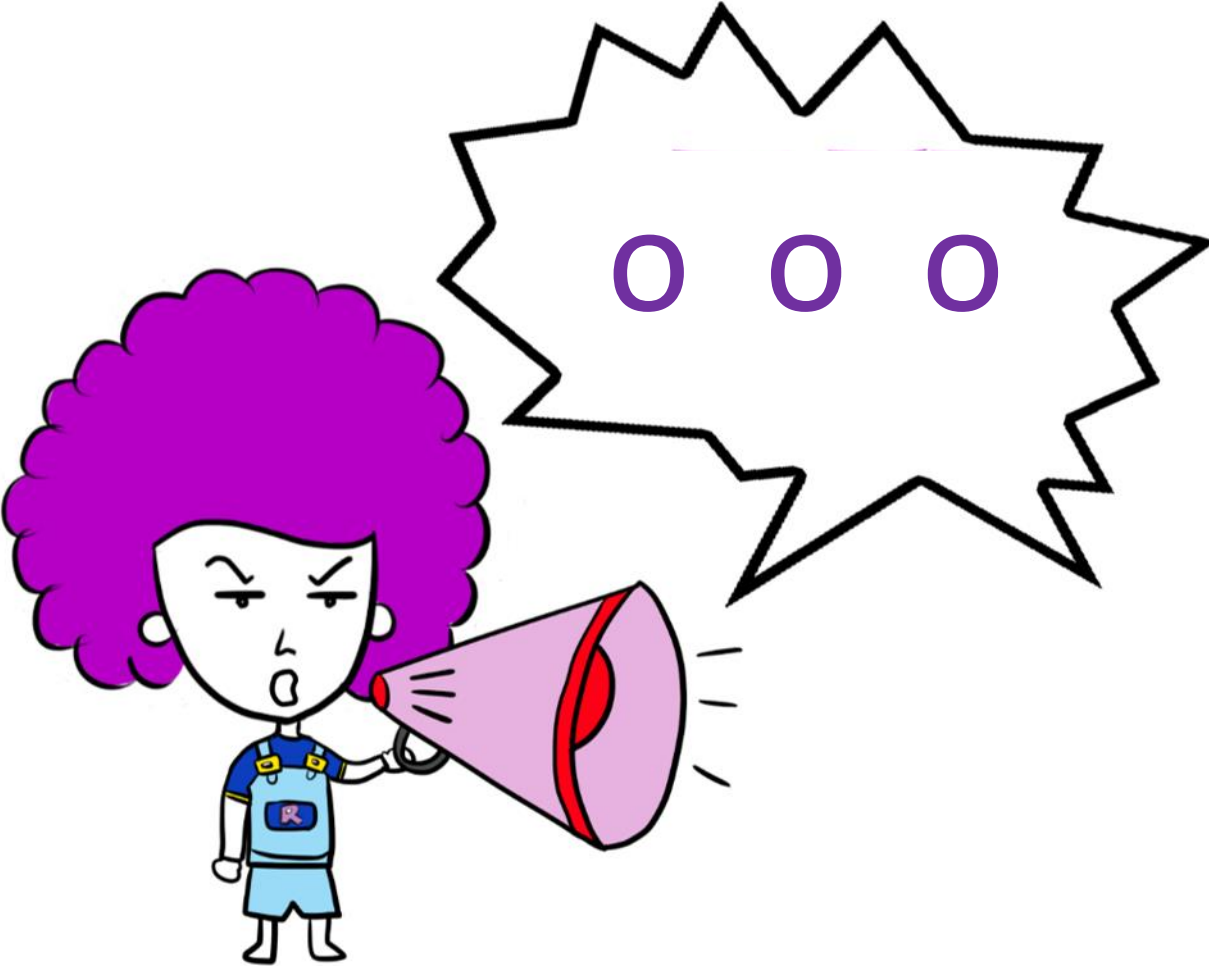




shoe



who



/y/ /ü/



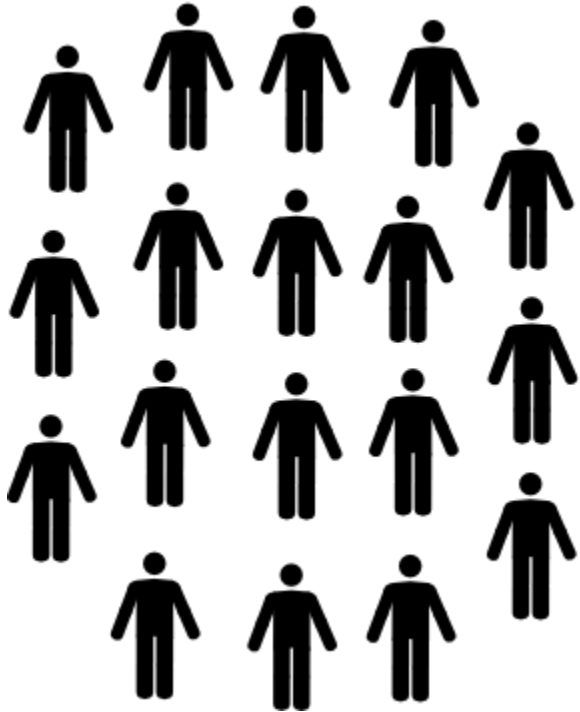
ou ou ou

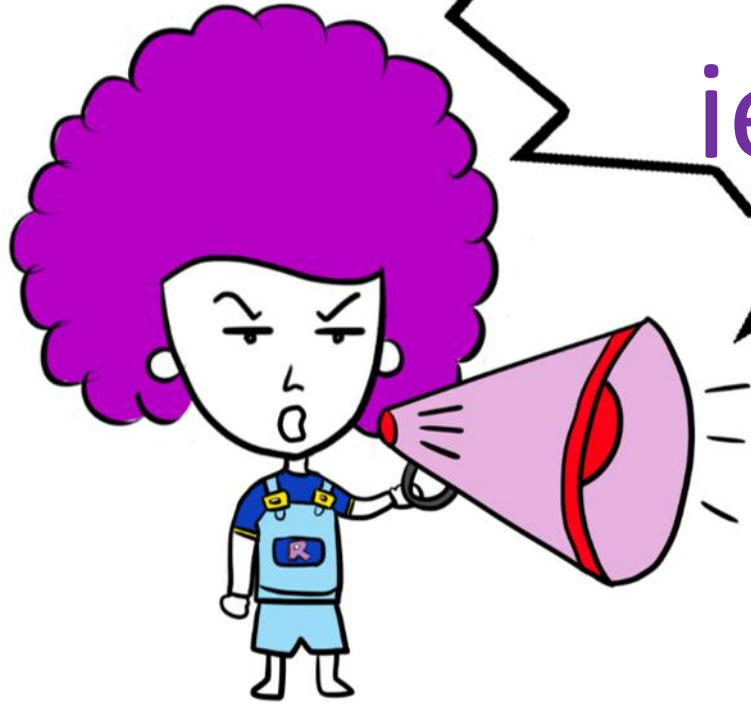
I love you

you

few

ew ew ew





iew iew
iew



view

/oi/

coin





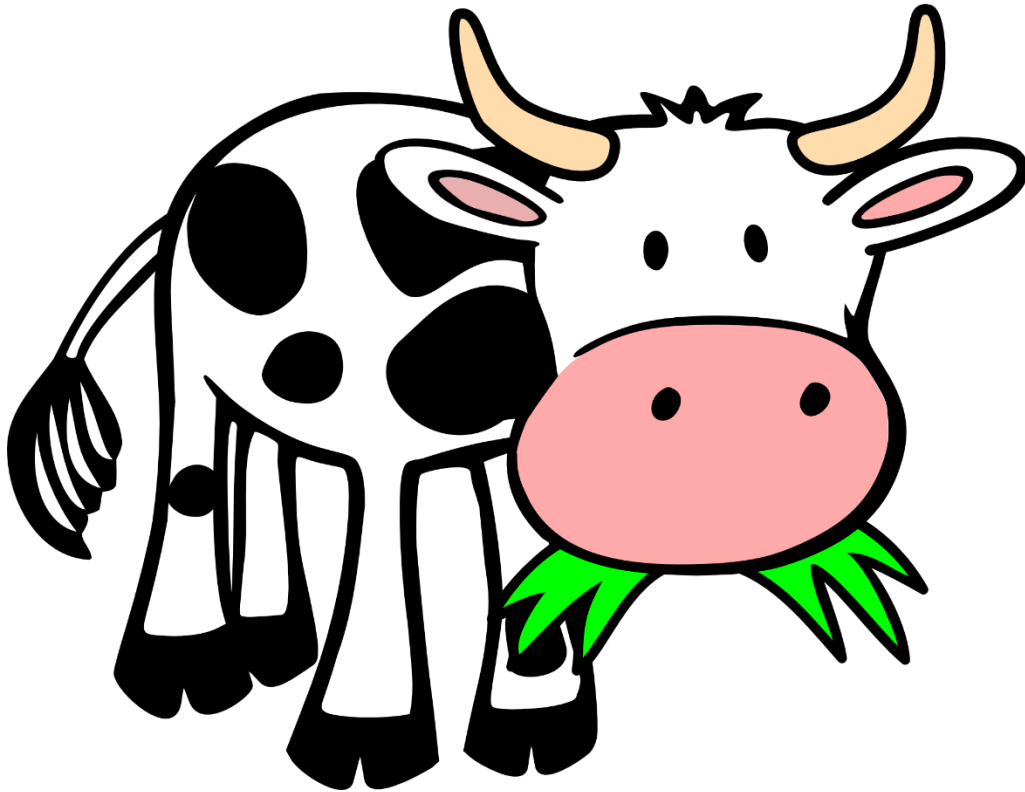
b boy



/ow/

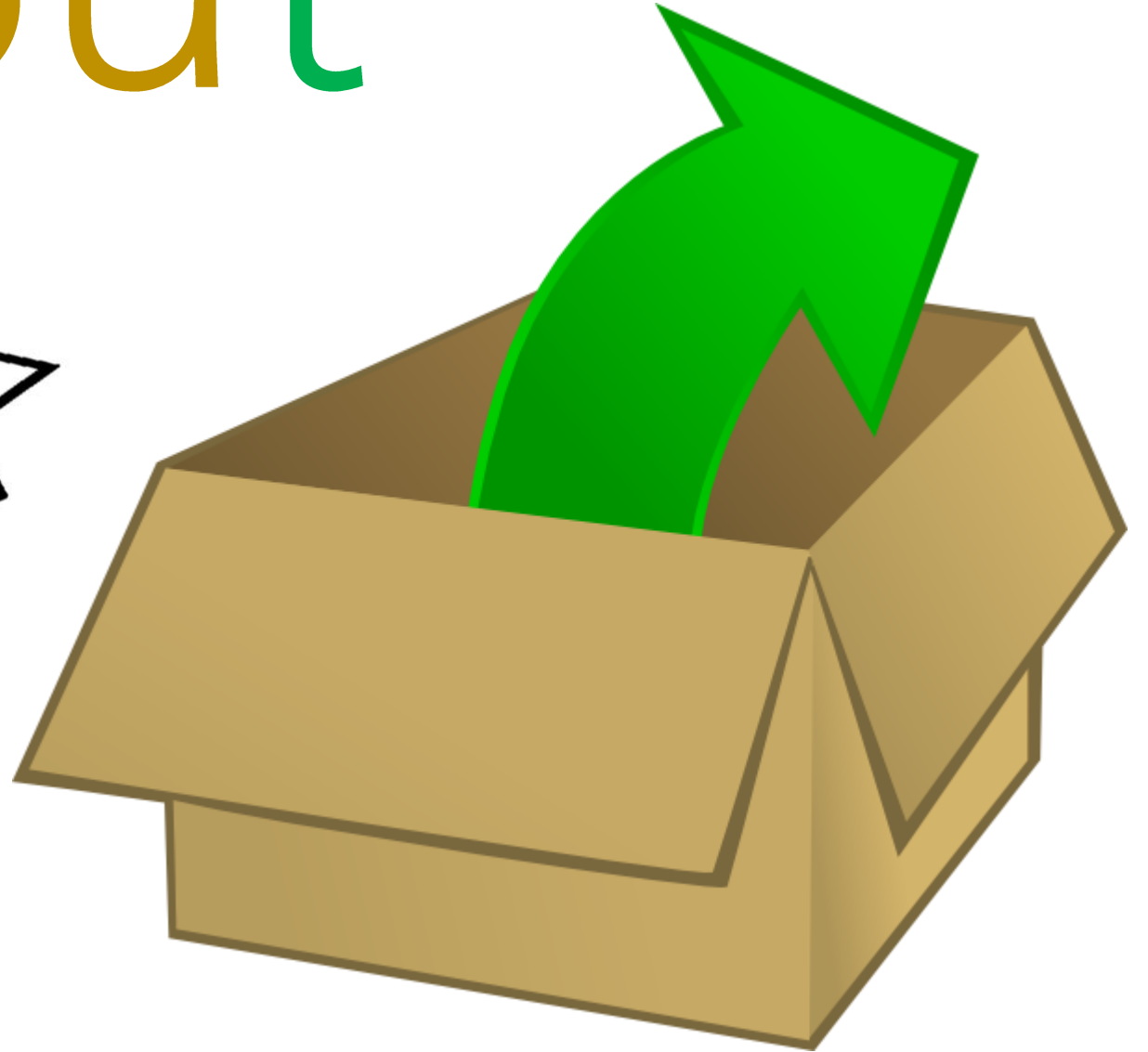
COW

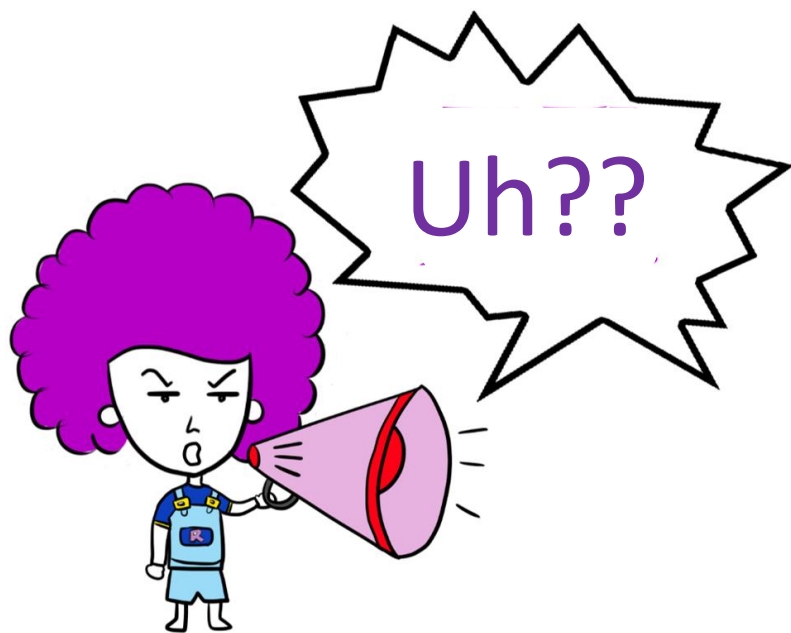
OW OW OW



out

ou ou ou

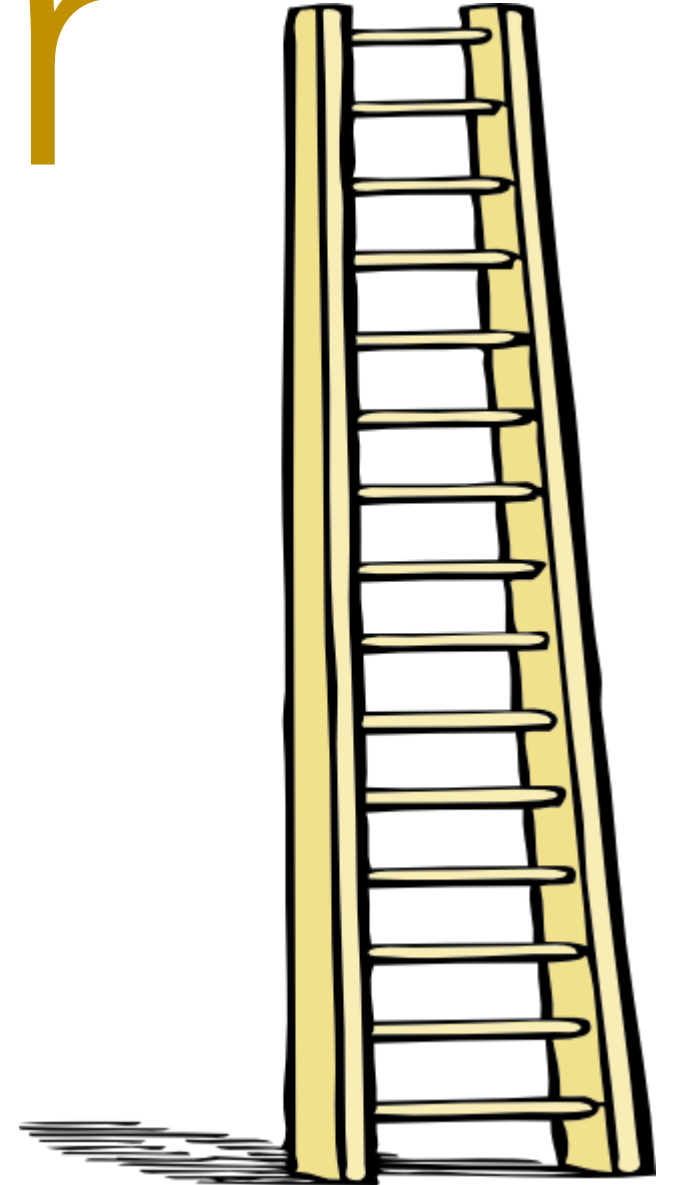




/e/

ladder

er er er

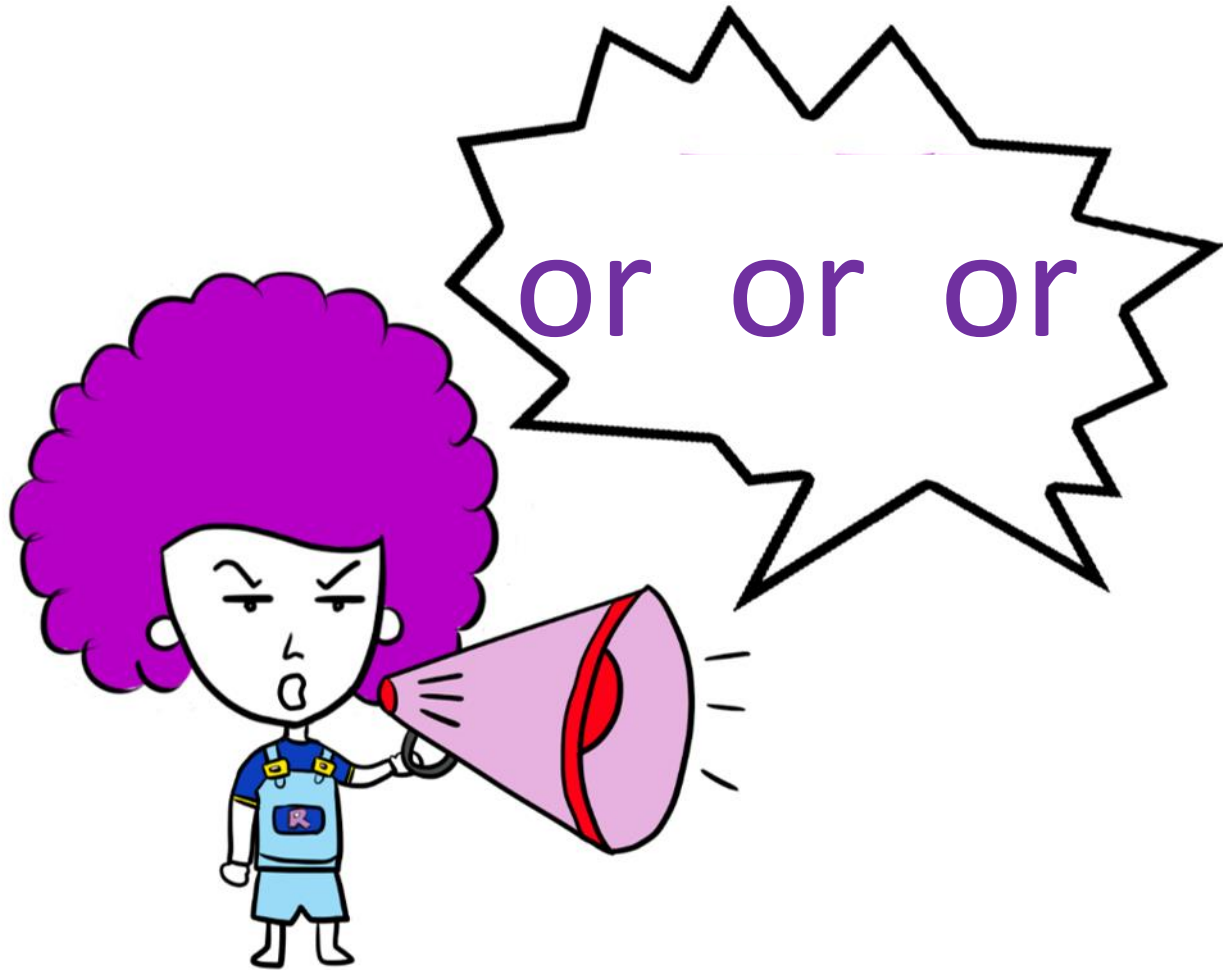


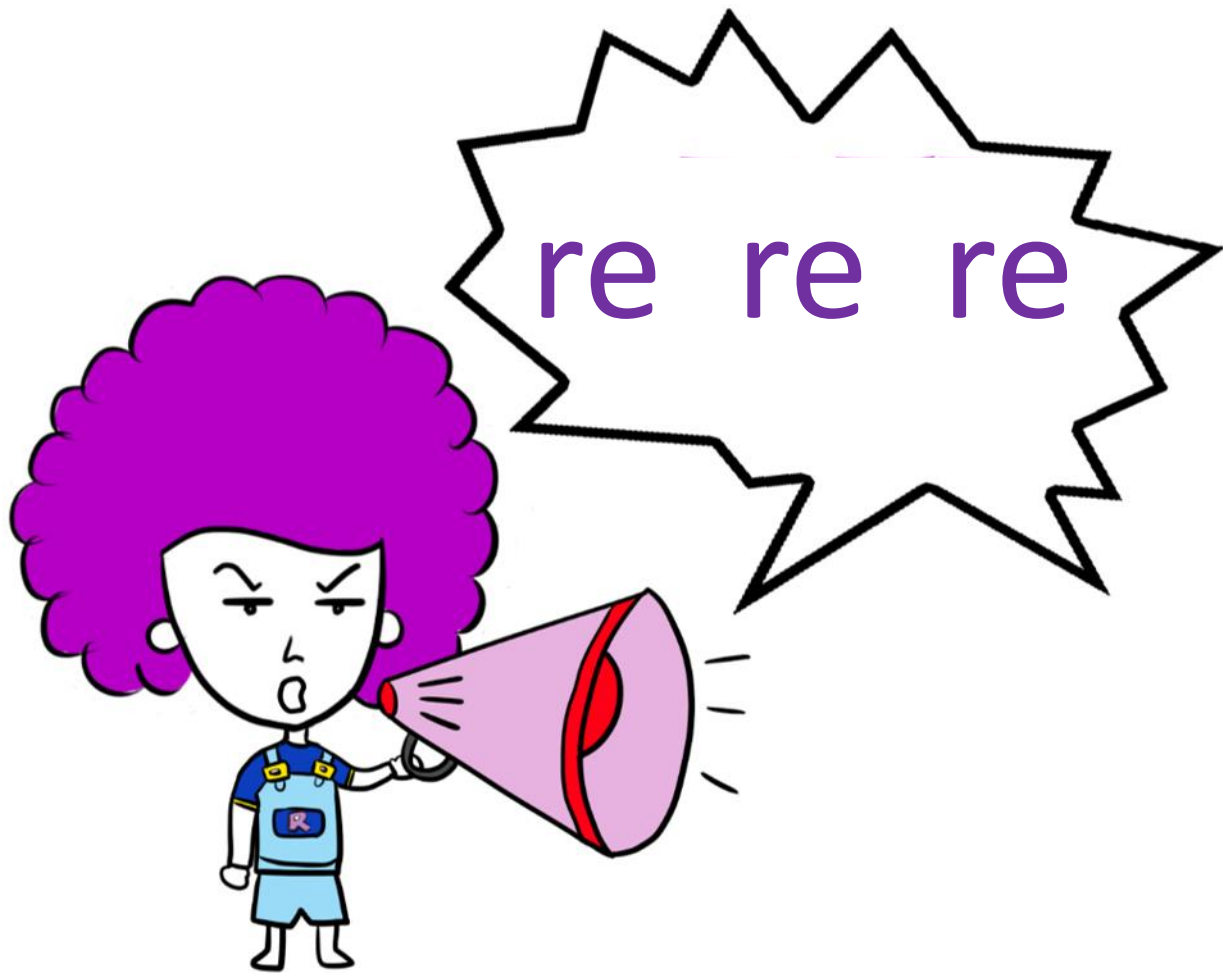
dollar

ar ar ar



doctor





centre