

Days of the Week



Months of the Year



Dates



Ordinal Numbers

Days of the Week –
Match the pictures with the days



Monday

Tuesday

Wednesday

Thursday

Friday

Saturday

Sunday



Days of the Week —

Match the pictures with the days
AND add the missing letters



M _ _ day

T _ _ _ _ day

W _ _ _ _ _ day

T _ _ _ _ _ day

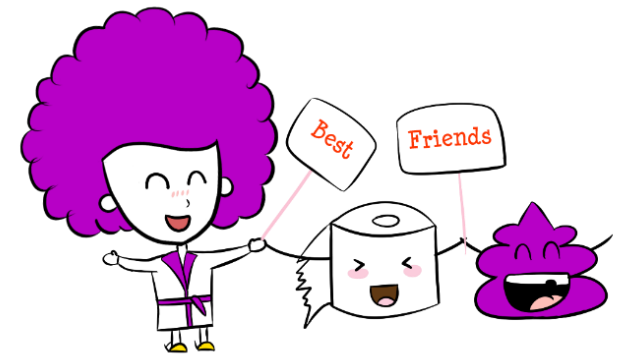
F _ _ ay

S _ _ _ _ _ day

S _ _ day



I can spell the days of the week!



M _____ has 6 letters.

T _____ has _ letters.

W _____ has _ letters.

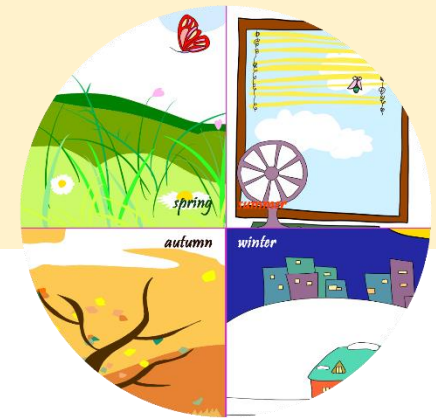
T _____ has _ letters.

F _____ has _ letters.

S _____ has _ letters.

S _____ has _ letters.

Months of the Year



1st – January

2nd – February

3rd – March

4th – April

5th – May

6th – June

7th – July

8th – August

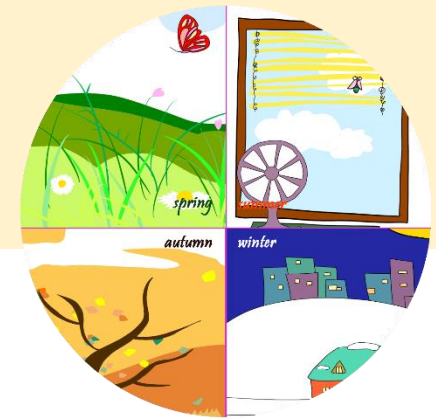
9th – September

10th – October

11th – November

12th – December

Months of the Year



1st — Jan

2nd — Feb

3rd — Mar

4th — Apr

5th — May

6th — Jun

7th — Jul

8th — Aug

9th — Sept

10th — Oct

11th — Nov

12th — Dec

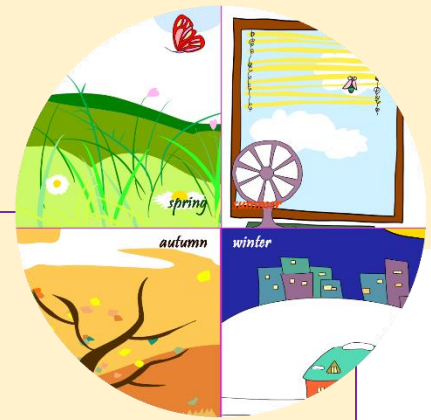
How Many Letters?



1. Jan _____ has 7 letters
2. February has _ letters
3. M _____ has 5 letters
4. A _____ has 5 letters too.
5. May has _ letters.
6. June has _ letters.

7. So too does _____.
8. Au _____ has 6 letters.
9. S _____ has _ letters.
10. O _____ has _ letters.
11. November has _ letters.
12. And D _____ has _ letters.

Months of the Year Review Test 1

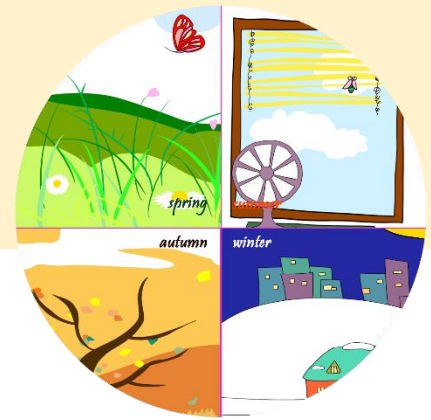


Jan _____ is not spelled like berry.
Neither is Feb _____.
There are two Rs in Feb _____
But only one in Jan _____.

The next two months
Are easy to remember.
They are Sept _____ and Oct _____.
Then the last two months are easy too.
It's Nov _____ and Dec _____.

M _____ A _____ M _____ and J _____
So easy you can write them soon!
J _____ is short and easy too.
But Au _____ is very difficult
Because it starts with A + U.

Months of the Year Review Test 2



1st month is... _____

2nd month is... _____

3rd month is... _____

4th month is... _____

5th month is... _____

6th month is... _____

7th month is... _____

8th month is... _____

9th month is... _____

10th month is... _____

11th month is... _____

12th month is... _____

Ordinal Numbers Reference Sheet



1st (the first)

2nd (the second)

3rd (the third)

4th (the fourth)

5th (the fifth)

6th (the sixth)

7th (the seventh)

8th (the eighth)

9th (the ninth)

10th (the tenth)

11th (the eleventh)

12th (the twelfth)

13th (the thirteenth)

14th (the fourteenth)

15th (the fifteenth)

16th (the sixteenth)

17th (the seventeenth)

18th (the eighteenth)

19th (the nineteenth)

20th (the twentieth)

21st (the twenty-first)

22nd (the twenty-second)

23rd (the twenty-third)

24th (the twenty-fourth)

25th (the twenty-fifth)

26th (the twenty-sixth)

27th (the twenty-seventh)

28th (the twenty-eighth)

29th (the twenty-ninth)

30th (the thirtieth)

31st (the thirty-first)

Speed Dates



1st first _____

2nd second _____

3rd third _____

4th _____

5th _____

6th _____

7th _____

8th _____

9th _____

10th _____

It's difficult to spell:

Speed Dates



11th

12th

13th

14th

15th

16th

17th

18th

19th

20th

It's difficult to spell:

21st

22nd

23rd

24th

25th

26th

27th

28th

29th

30th

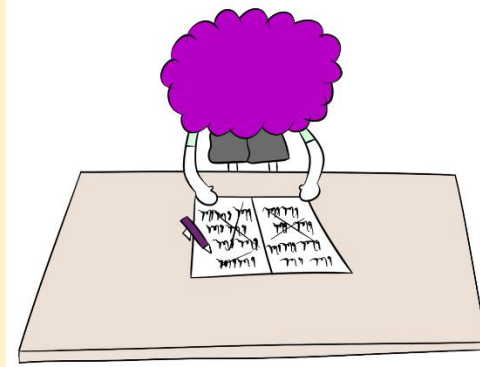
31st

Speed Dates



It's difficult to spell:

Ordinal Numbers Review: Listen and Write



I. _____

II. _____

III. _____

IV. _____

V. _____

VI. _____

VII. _____

VIII. _____

IX. _____

I. _____

II. _____

III. _____

IV. _____

V. _____

VI. _____

VII. _____

VIII. _____

IX. _____

Test 1

Test 2